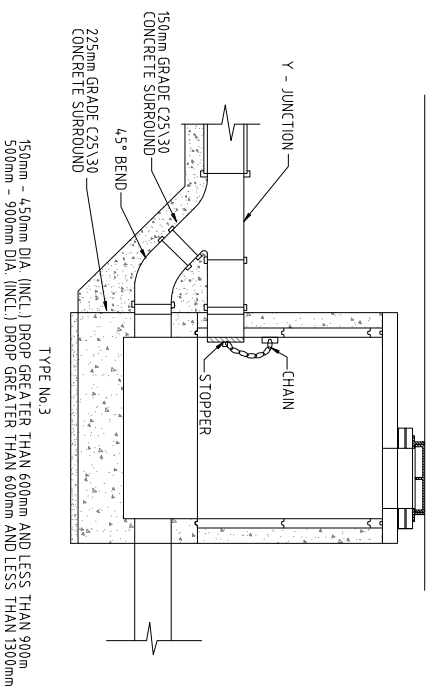
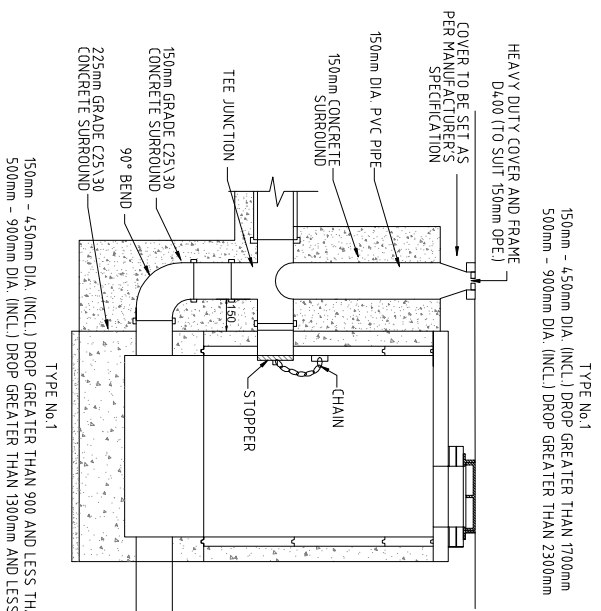
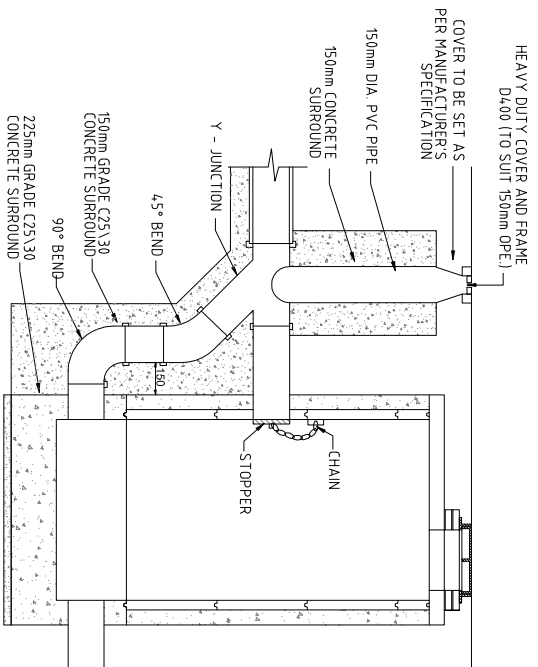


1. ALL DIMENSIONS ARE IN MILLIMETRES (mm) UNLESS NOTED OTHERWISE.
2. RODDING EYE CHAMBER SHALL BE COVERED WITH APPROVED HEAVY DUTY METAL COVERS TO IS 261 AND BS 5834. COVER AND FRAME SHALL BE SUITABLE FOR ROAD AND TRAFFIC CONDITIONS AND IS SUBJECT TO THE APPROVAL OF IRISH WATER.
3. ALL CHAMBERS TO BE CHECKED FOR UPLIFT BY THE DEVELOPER BASED ON GROUND CONDITIONS WITHIN THE SITE SHOULD ANTI-FLOATATION MEASURES BE REQUIRED THEY SHALL BE SUBJECT TO APPROVAL FROM IRISH WATER.
4. ALL CONCRETE TO BE IN ACCORDANCE WITH IS EN 206.
5. MANHOLE DETAILS TO BE IN ACCORDANCE WITH STD-W-09, 10 AND 11

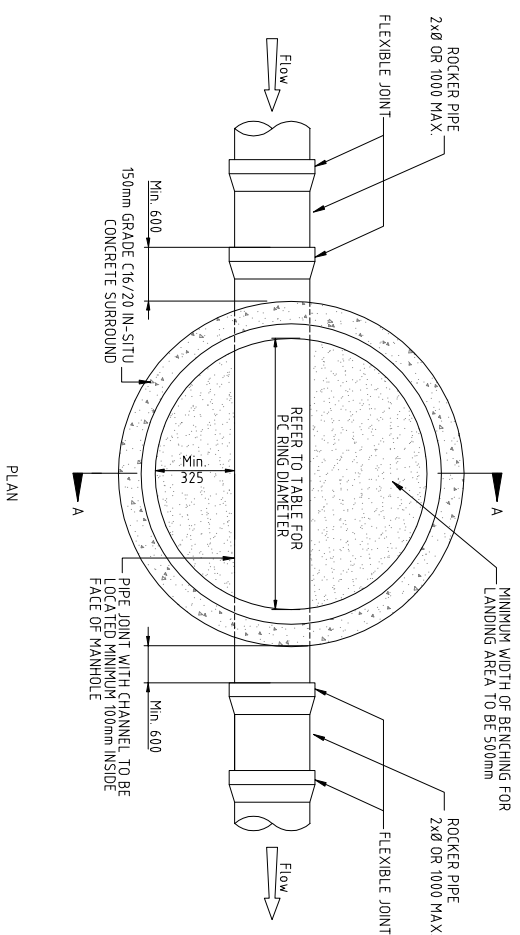
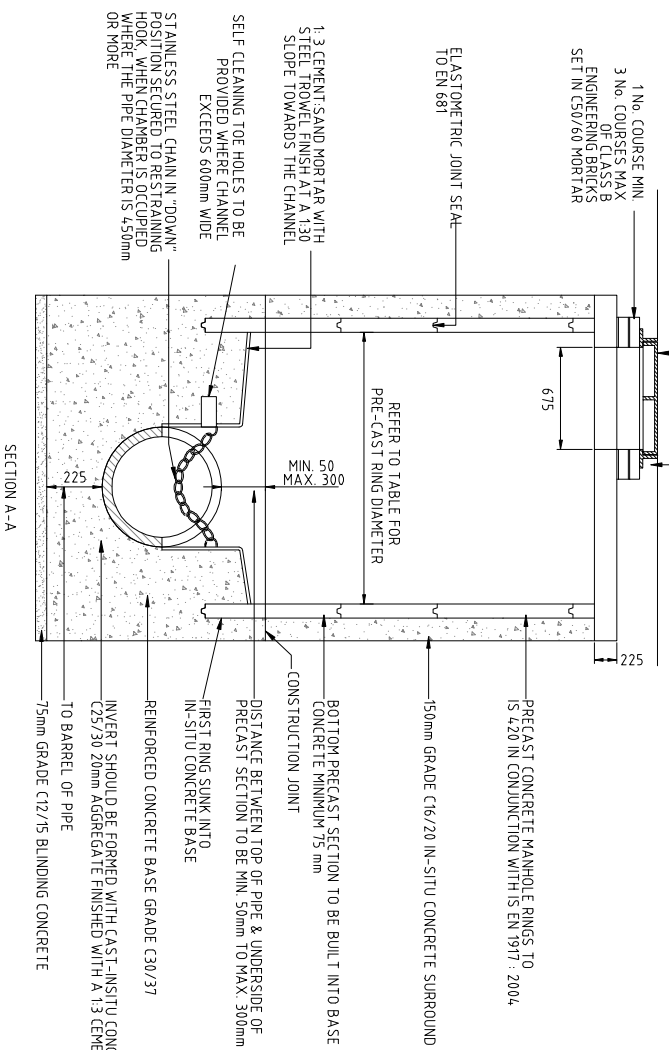


BACKDROP MANHOLES

GENERAL NOTES:

1. DRAWINGS TO BE READ IN CONJUNCTION WITH ARCHITECT'S DRAWINGS.
2. ALL DIMENSIONS IN MILLIMETRES.
3. SETTING OUT DETAILS TO BE OBTAINED FROM ARCHITECT'S DRAWINGS.
4. ARCHITECT TO BE INFORMED OF ANY DISCREPANCIES IMMEDIATELY.
5. ENGINEER TO BE NOTIFIED OF ANY STRUCTURAL CONC. POINTS SO THEY MAY BE INSPECTED AND PASSED.
6. ALL WORKS TO BE CARRIED OUT IN ACCORDANCE WITH CURRENT IRISH AND BRITISH STANDARDS.
7. ALL WORKS TO BE CARRIED OUT IN CONJUNCTION WITH CORK COUNTY COUNCIL/IRISH WATER DRAINAGE DEPARTMENT.
8. CONTRACTOR TO KEEP FULL RECORDS OF POSITIONS OF ALL DRAINS AND CONNECTIONS AND ON COMPLETION FULL AS-BUILT DRAWINGS TO BE PRODUCED BY THE CONTRACTOR.

HINGED DOUBLE LEAF MANHOLE COVER AND FRAME SHALL COMPLY TO IS EN 124 AND BS 7903 (ALL CLASS D400 COVERS SHALL HAVE MIN. FRAME DEPTH 150mm) OPE: 675x675mm



MINIMUM MANHOLE DIAMETERS	
DIAMETER OF LARGEST PIPE IN MANHOLE (mm)	INTERNAL DIAMETER OF MANHOLE (mm)
LESS THAN 375	1200
375 TO 450	1350
500 TO 750	1500

PRE-CAST CONCRETE MANHOLE

NORMAL INTERNAL DIAMETER	MINIMUM TRENCH WIDTH (mm)	MAXIMUM TRENCH WIDTH (mm)
100	450	650
150	500	700
225	600	800
300	700	900

MAX & MIN. TRENCH WIDTHS

- MANHOLES**
1. Pre-cast concrete manholes to be accordance with IS 420, 1989.
 2. Manhole covers to roads to be Cavanagh Farmer heavy duty Ref: A0011 to EN 124, or similar approved.
 3. Manhole covers to gardens and medium trafficked areas to be Cavanagh Tiger Duty Ref: A0053 to EN 124, or similar approved.

No part of this document shall be reproduced or transmitted in any form or by any means, electronic, mechanical, photocopying, recording, or by any information storage and retrieval system, without the written permission of RYA. Where necessary, permission shall be granted for use on the project for which the document was originally issued.

Notes

1. ALL DIMENSIONS ARE IN MILLIMETRES (mm) UNLESS NOTED OTHERWISE.
2. PRE-CAST MANHOLES UNITS: COMPLYING WITH REQUIREMENTS OF IS EN 1917 AND BS 5911-PART 3.
3. THICKER MANHOLE BASES REQUIRED FOR SEWERS IN EXCESS OF 3m DEEP WHERE THE SIZE IS GREATER THAN THE STANDARD MINIMUM SIZE CHANNELS. BENCHING ETC. SUBJECT TO IRISH WATER APPROVAL AND APPROVED PRE-CAST CONCRETE BASES MAY BE USED INCORPORATING CHANNELS.
4. APPROVED PRE-CAST CONCRETE BASES MAY BE USED INCORPORATING CHANNELS. BENCHING ETC. SUBJECT TO IRISH WATER APPROVAL AND COMPLYING WITH BS 5911-PART 4, 2002.
5. STRUCTURAL DESIGN AND REINFORCEMENT DETAILS TO BE PROVIDED BY THE DEVELOPER AND SUBMITTED TO IRISH WATER FOR REVIEW.
6. MANHOLES GREATER THAN 3m IN DEPTH WILL REQUIRE A DETAILED STRUCTURAL DESIGN AND BE SUBJECT TO IRISH WATER APPROVAL.
7. MANHOLE ROOFS SHOULD CONSIST OF REINFORCED CONCRETE SLAB OF IN-SITU CONCRETE, C30/37, WITH A MINIMUM THICKNESS OF 225mm DESIGNED TO CARRY ALL LIVE AND DEAD LOADS. ALTERNATIVELY APPROVED PRE-CAST CONCRETE ROOF SLABS MAY BE USED SUBJECT TO IRISH WATER APPROVAL AND COMPLIANCE WITH BS 5911 PART 4, 2002.
8. COVERS AND FRAMES SHALL BE SUITABLE FOR ROAD AND TRAFFIC CONDITIONS SUBJECT TO APPROVAL FROM IRISH WATER.
9. 200mm ALL AROUND, 100mm DEEP CONCRETE PLINTH WITH PROTECTIVE STAINLESS STEEL METAL BAND AROUND COVERS IN GREEN AREAS.
10. ALL CHAMBERS TO BE CHECKED FOR UPLIFT BY THE DEVELOPER BASED ON GROUND CONDITIONS WITHIN THE SITE. SHOULD ANTI-FLOATATION MEASURES BE REQUIRED THEY SHALL BE SUBJECT TO APPROVAL FROM IRISH WATER.
11. ALL CONCRETE TO BE IN ACCORDANCE WITH IS EN 206, 2013.

Rev.	Date	Drawn	Description	PF
1	April 24,	ME	Issued for Part 8 Planning	PF

rya
CONSULTING ENGINEERS
CIVIL | STRUCTURAL | PROJECT MANAGEMENT

2 Cloughreen Business Park,
Blarney Road, Cork,
Ireland.
T: +353 (0)21 4399799
F: +353 (0)21 4399797
E: cedm@rya.ie
W: www.rya.ie

Clients:
CETTI LTD.

Project:
PROPOSED DEVELOPMENT
AT FARRANLEA ROAD, CORK CITY.

Drawing Title:
PROPOSED MANHOLE DETAILS

Designed: RYA	Drawn: DT	Date: APRIL 2024
Eng. Chk: PF	Eng. Chk: PF	Scale: 1:25 @ A1
Project No: 0567001		1:50 @ A3
Drawing No: 1007	Status: PLANNING	Rev: PL