

DO NOT SCALE. WORK TO FIGURED DIMENSIONS ONLY.  
 ALL EXISTING DIMENSIONS TO BE CHECKED ON SITE.  
 DRAWN ON AUTOCAD R2004 AT DEADY GAHAN ARCHITECTS LTD  
 LAYERS ON THIS DRAWING COMPLY WITH BS 1192: PART 5

PROPOSED TACTILE PAVING /  
 TRAFFIC CALMING RAMP.  
 PLEASE REFER TO ENGINEERS  
 DRAWINGS FOR ADDITIONAL DETAIL  
 AND SIGHT-LINE INFORMATION.

**LANDSCAPING SCHEDULE:**

- PROPOSED PLANTING
- SITE BOUNDARY
- PROPOSED GRASS
- 2.0M HIGH WALL TO BE CONSTRUCTED USING EXISTING STONE IN ORDER TO MATCH EXISTING BOUNDARY WALL
- CONCRETE FOOTPATH
- EXISTING BOUNDARY TO BE RETAINED AND LOWERED TO 600MM HEIGHT. PLEASE REFER TO ENGINEERS DRAWINGS FOR SIGHTLINE DETAILS.
- PLAZA AREA
- EXISTING BOUNDARY TO BE RETAINED AND SUPPLEMENTED WHERE NECESSARY

**PLANTING LIST**

**TREES**

**PROPOSED TREE PLANTING**

Plant Name	Girth cm	Height	
<i>Acer campestre</i>	16-18	5.5 m	Root Balled
<i>Acer plat glabrum</i>	16-18	5.5 m	Root Balled
<i>Acer saccharinum</i>	16-18	5.5 m	Root Balled
<i>Alnus glutinosa</i>	16-18	5.5 m	Root Balled
<i>Betula nigra multistern</i>	16-18	5.5 m	Root Balled
<i>Betula pedula</i>	16-18	5.5 m	Root Balled
<i>Betula utilis jacquemontii</i>	16-18	5.5 m	Root Balled
<i>Carpinus betulus</i>	16-18	5.5 m	Root Balled
<i>Carpinus betulus fastigiata</i>	16-18	5.5 m	Root Balled
<i>Crataegus monogyna</i>	16-18	5.5 m	Root Balled
<i>Fugulus regina</i>	16-18	5.5 m	Root Balled
<i>Sorbus aucuparia 'JosephRock'</i>	16-18	5.5 m	Root Balled
<i>Tilia echlora</i>	16-18	5.5 m	Root Balled
<i>Tilia cordata 'Green Spire'</i>	16-18	5.5 m	Root Balled
<i>Pinus sylvestris</i>	16-18	5.5 m	Container
<i>Prunus avium</i>	16-18	5.5 m	Root Balled
<i>Prunus kanzan</i>	16-18	5.5 m	Root Balled

**PROPOSED SPECIMEN TREE PLANTING**

Plant Name	Girth cm	Height	
<i>Quercus robur</i>	20 - 25 cm	5.5 m	Root Balled

**PROPOSED HEDGEROW**

Plant Name	Girth cm	Height	
<i>Crataegus monogyna</i>	-	60 - 80	Bareroot

**PROPOSED LOW SHRUB MIX**

Plant Name	Height	Pot size	Spacing
<i>Acuba japonica 'variegata'</i>	60 - 80 cm	3 Lt	0.5m cts
<i>Caryopteris x cladoensis 'Heavenly Blue'</i>	40 - 50 cm	3 Lt	0.5m cts
<i>Camellia x williamsii 'Donation'</i>	30 - 40 cm	2 Lt	0.5m cts
<i>Ceanothus 'Blue Mound'</i>	40 - 50 cm	3 Lt	0.5m cts
<i>Chalysia x dewilleana 'Aztec Pearl'</i>	30 - 40 cm	2 Lt	0.5m cts
<i>Euonymus fortunei 'Kewensis'</i>	40 - 50 cm	3 Lt	0.5m cts
<i>Fatsia japonica</i>	60 - 80 cm	5 Lt	0.5m cts
<i>Lonicera pileata 'Maygreen'</i>	30 - 40 cm	3 Lt	0.5m cts
<i>Hypericum calycinum</i>	40 - 50 cm	3 Lt	0.5m cts
<i>Mahonia media 'Charity'</i>	60 - 80 cm	3 Lt	0.5m cts
<i>Pachysandra terminalis</i>	30 - 40 cm	2 Lt	0.5m cts
<i>Philadelphus 'Beaueclerk'</i>	30 - 40 cm	2 Lt	0.5m cts
<i>Pieris 'Forest Flame'</i>	30 - 40 cm	2 Lt	0.5m cts
<i>Prunus laurocerasus 'Zabeliana'</i>	40 - 60 cm	3 Lt	0.5m cts
<i>Potentilla fruticosa 'Abbotswood'</i>	30 - 40 cm	2 Lt	0.5m cts
<i>Stipa pinnata</i>	-	2 Lt	0.5m cts

**\* Note - The plant material must be acclimatised to regional conditions & locally established stock.**



**PROGRAMME OF IMPLEMENTATION**

Implementation of the landscape proposals should begin as soon as practical. Landscape work will run in conjunction with main building works where possible. Remaining works will be initiated as soon as the building works are complete and all landscape works are to be completed within 12 months of the commencement of the development

**CLEARANCE**

1. ALL DEBRIS MATERIAL TO BE CLEARED FROM THE PROPOSED PLANTING AREA AND CARTED OFF SITE TO AN APPROVED TIP PRIOR TO ANY EXCAVATION / CULTIVATION WORKS.

**SITE PREPARATION**

1. FOLLOWING CLEARANCE, THE ENTIRE AREA SHALL BE CULTIVATED TO A MEDIUM TILTH PRIOR TO TOP SOIL BEING SPREAD. ALL TOP SOIL SHALL COMPLY TO THE FOLLOWING -

- ALL IMPORTED SOIL TO BE MEDIUM GRADE LOAM TO BS. 3882
- SOIL SHALL HAVE AN ACIDITY READING OF BETWEEN pH 6.0 AND 7.0
- STONE CONTENT SHALL BE OVER 5% BUT NOT EXCEEDING 20%, STONES BY DRY WEIGHT. MAXIMUM SIZE OF STONE TO BE 20mm DIAMETER ON LARGEST SIDE.
- SOIL MAKE UP 15-27% CLAY  
 0-70% SAND  
 20-40% SILT & FIBEROUS MATERIAL

2. TOPSOIL TO BE FREE OF GRASS, PERNICIOUS WEEDS AND WEED SEED

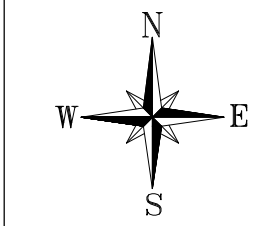
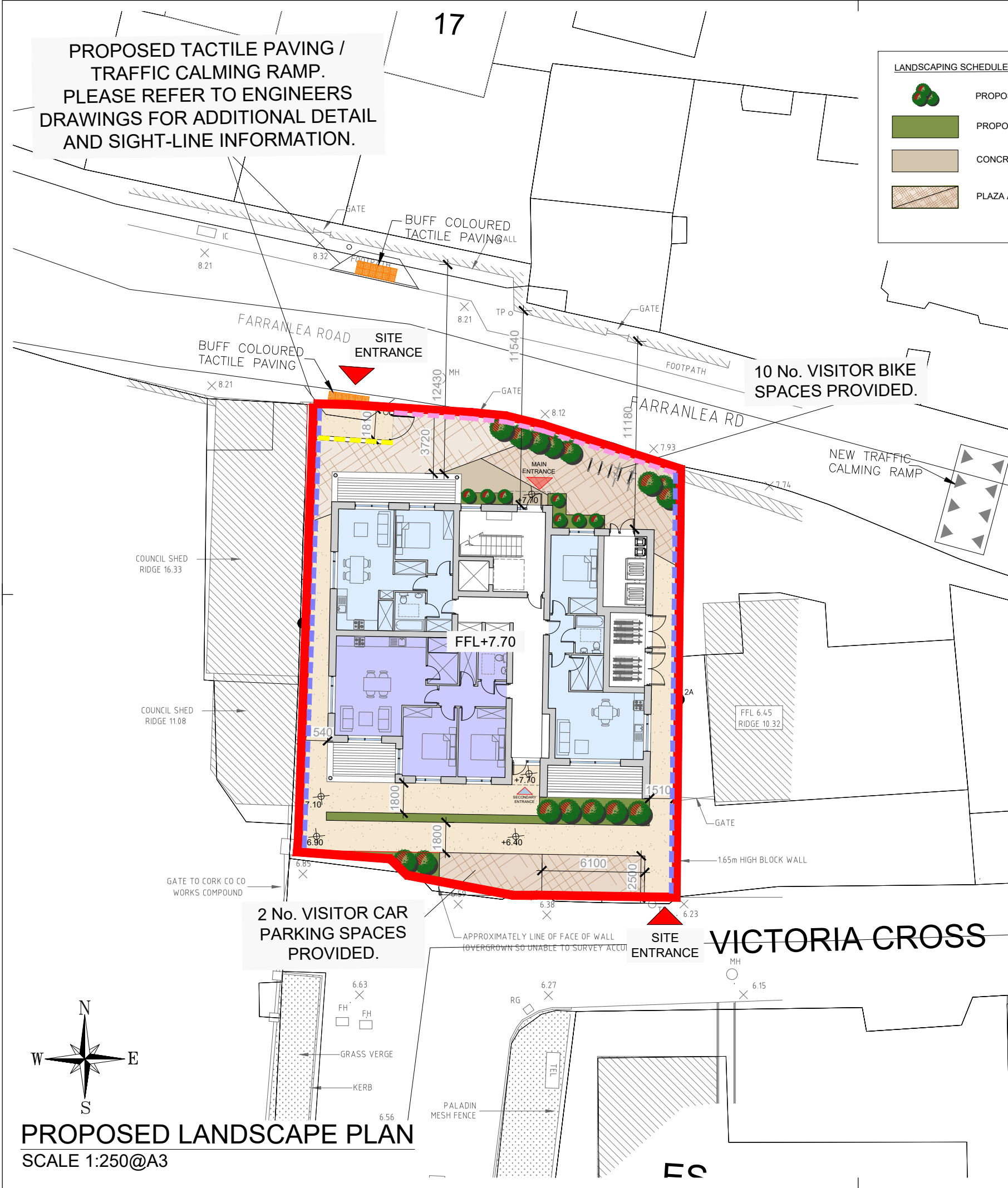
3. AFTER ALL TOPSOIL SPREAD AND PRIOR TO PLANTING SOIL TO BE CULTIVATED TO A MEDIUM TILTH AND TURNED OVER TO A MINIMUM OF 300mm. INCORPORATE AN APPROVED SLOW RELEASE GRANULAR FERTILISER AT MANUFACTURERS RECOMMENDED RATE.

4. TOPSOIL TO BE SPREAD TO A MINIMUM DEPTH OF 300mm AND SHALL BE GRASSED.

5. TOPSOIL SHALL STAND 25mm PROUD OF MANHOLE COVERS, PATHS & KERBS AFTER CULTIVATION & FIRING.

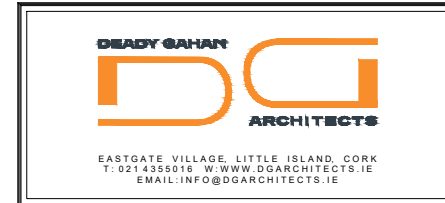
**EXISTING TREES**

A PROTETIVE FENCE SHOULD BE ERECTED OUTSIDE THE ROOT PROTECTION ZONE PRIOR TO CONSTRUCTION WORK AS PER BS 5837:2012



**PROPOSED LANDSCAPE PLAN**  
 SCALE 1:250@A3

Date	rev	name	chk	note
03.04.24	P1	MP	EJG	ISSUE FOR PLANNING



Project  
 RESIDENTIAL DEVELOPMENT AT  
 FARRANLEA ROAD,  
 CO. CORK

Drawing title  
 PROPOSED LANDSCAPE PLAN

Scale	Drawn	Checked	Date
1:250 @ A3	MP	EJG	02.11.23

Project No.	Drg. No.	Revision
21060	21060/P1005	P1

Information / Comments  
 Planning

Tender  
 Construction