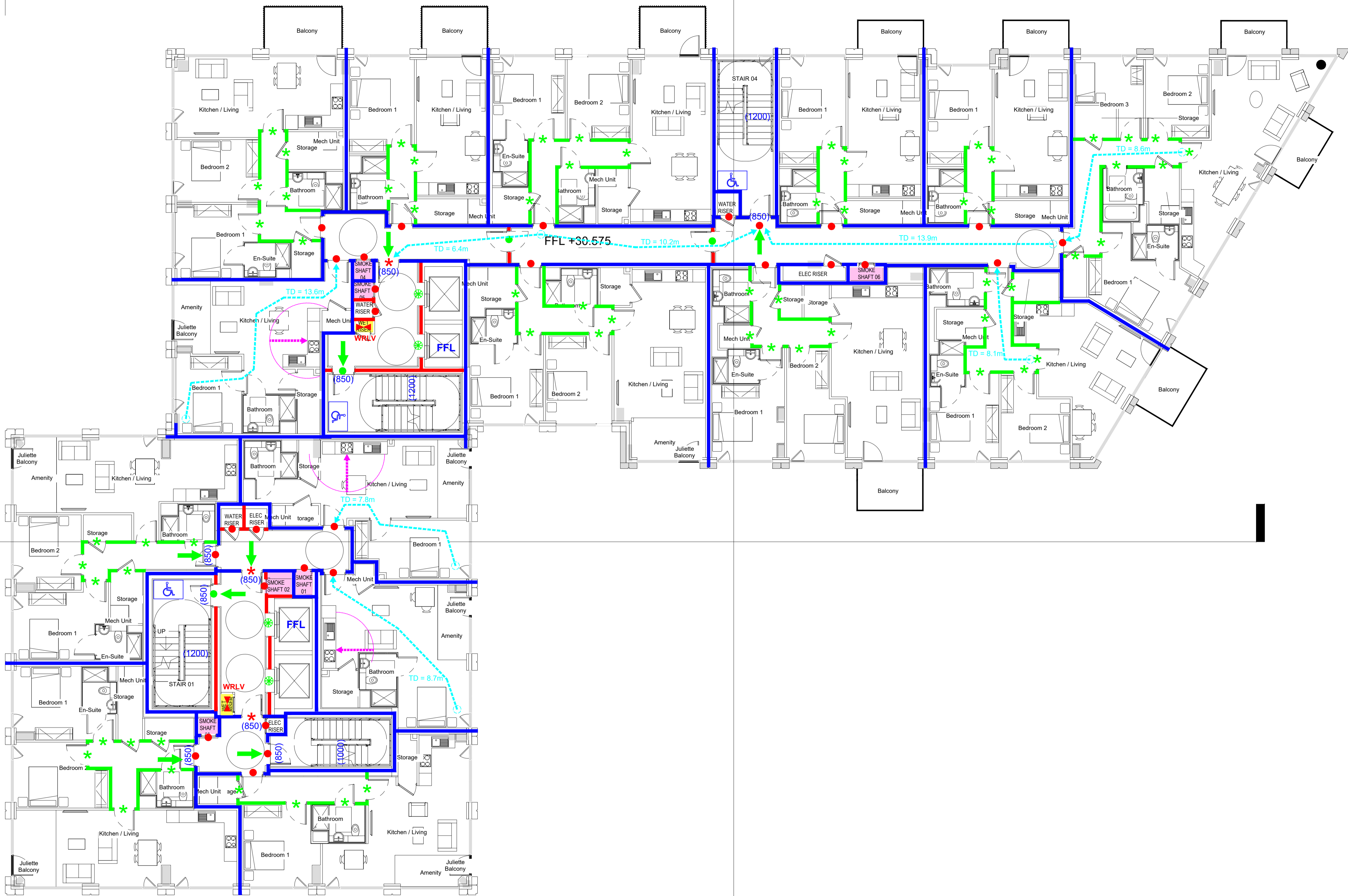


B-B
P3001

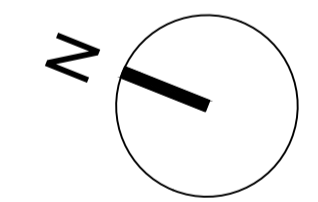
64196

LEGEND

- Compartment wall/floor achieving 240 minutes fire resistance rating (stability, integrity and insulation) in accordance with BS 476: Part 8:20-24 (or RE240 rating when tested to the relevant European standard and subject to the method of exposure set out in Table A1 of the Technical Guidance Document B 2020 and in the case of a wall to extend full storey height).
- Compartment wall/floor achieving 120 minutes fire resistance rating (stability, integrity and insulation) in accordance with BS 476: Part 8:20-24 (or RE120 rating when tested to the relevant European standard and subject to the method of exposure set out in Table A1 of the Technical Guidance Document B 2020 and in the case of a wall to extend full storey height).
- Compartment wall/floor achieving 60 minutes fire resistance rating (stability, integrity and insulation) in accordance with BS 476: Part 8:20-24 (or RE60 rating when tested to the relevant European standard and subject to the method of exposure set out in Table A1 of the Technical Guidance Document B 2020 and in the case of a wall to extend full storey height).
- Fire resisting wall/partition achieving 30 minutes fire resistance rating (stability, integrity and insulation) in accordance with BS476: Part 8:20-24 and relevant recommendations of Appendix A of Technical Guidance Document B with uninsulated glazed elements certified to the locations identified in Table A4 of Technical Guidance Document B 2020 except in the case of apartments where the limits in Table 1 of BS9991: 2011 Part 1: 1990 are to apply instead. Fire rated wall/partitions to be either:
 - (i) carried up above ceiling level or down below raised access floors to the soffit of the floor construction or the roof soffit level as appropriate or
 - (ii) cavity barriers are to be installed in the ceiling void or underfloor void on the line of fire rated partitions or
 - (iii) carried up above ceiling level or down below raised access floors to the soffit of the floor construction or the roof soffit level as appropriate, to a specification in accordance with Item 17 of Table A1 of Technical Guidance Document B
- Fire resisting doorset to have not less than 60 minutes integrity rating in accordance with BS476: Part 8:20-22 or E60 rating when tested in accordance with the relevant European standard. The doorset to be fitted with cold smoke seals achieving a leakage rate not exceeding 3m³/hour (head and jamb) when tested at 25Pa under BS 476: Section 31.1 or achieve an Sa classification when tested to I.S. EN 1634-3:2004. Doorset to be fitted with an automatic self closing door which is capable of closing the door from any angle and against any latch fitted to the door.
- Fire resisting doorset to have not less than 60 minutes integrity rating in accordance with BS476: Part 8:20-22 or E60 rating when tested in accordance with the relevant European standard. Doorset to be fitted with an automatic self closing door which is capable of closing the door from any angle and against any latch fitted to the door.
- Fire resisting doorset to have not less than 30 minutes integrity rating in accordance with BS476: Part 8:20-22 or E30 rating when tested in accordance with the relevant European standard. The doorset to be fitted with cold smoke seals achieving a leakage rate not exceeding 3m³/hour (head and jamb) when tested at 25Pa under BS 476: Section 31.1 or achieve an Sa classification when tested to I.S. EN 1634-3:2004. Doorset to be fitted with an automatic self closing door which is capable of closing the door from any angle and against any latch fitted to the door.
- * Fire resisting doorset to have not less than 60 minutes integrity and insulation rating in accordance with BS476: Part 8:20-22 or E60 rating when tested in accordance with the relevant European standard. The doorset to be fitted with cold smoke seals achieving a leakage rate not exceeding 3m³/hour (head and jamb) when tested at 25Pa under BS 476: Section 31.1 or achieve an Sa classification when tested to I.S. EN 1634-3:2004. Doorset to be fitted with an automatic self closing door which is capable of closing the door from any angle and against any latch fitted to the door.
- * Fire resisting doorset to have not less than 30 minutes integrity and insulation rating in accordance with BS476: Part 8:20-22 or E30 rating when tested in accordance with the relevant European standard. Doorset to be fitted with an automatic self closing door which is capable of closing the door from any angle and against any latch fitted to the door.
- * Fire resisting lift landing door achieving not less than 30 minutes integrity rating in accordance with BS 476: Part 8:20-22.
- Disabled refuge space (min 1400mmx900mm) in accordance with BS 9999.
- (XXXX) Dimensions refer to:
 - a) minimum aggregate operable clear width of doors; or
 - b) width of corridor measured between finished surface of walls or other fixed obstructions (such as protruding columns) at shoulder level, subject to handrails not intruding more than 100mm or skirtings not intruding more than 30mm into the measured width;
 - c) clear width of stairway measured between walls or balustrades subject to handrails not intruding more than 100mm or stringers not intruding more than 30mm into the clear width.
- Indicates designated exits / direction of escape.
- Travel Distance in meters.
- FFL Firefighting lift conforming with relevant recommendations of BS 9999 and BS EN 81-72:2020. The lift car shall be a minimum size of 1100mm wide by 1400mm deep with a rated load of 500kg. The method of rescue of fire-fighters should they become trapped in the lift car is assumed to form outside the car using the fire services portable ladders.
- WRLV Landing valve on wet rising fire main conforming with IS 391 : 2020.
- WRTI Inlet to replenish wet riser tank.
- Riser fire stopped at floor level to rating of the floor.
- Shading denotes area outside the scope of this application.
- Mechanically Ventilated Smoke Shaft.
- 1800
- 1.8m separation distance from main kitchen cooking appliance.



40409
A-A
P3000



FSC Application

A MINOR AMENDMENTS	15.05.2024
REV. DESCRIPTION	DATE
MSA	
Michael Slattery Associates	
Fire Safety Engineers	
www.msa.ie	
19 Windsor Place Lower Pembroke Place Dublin 2, Ireland Tel: +353(1)6765713 Fax: +353(1)6785247	> Building Design & Construction > Fire Engineering Design > Event Safety & Management > Building Fire Safety Management > Disabled Access Consultancy > Computer Modelling
PROJECT ALBERT QUAY	
FIRE SAFETY CERTIFICATE	
TITLE EIGHT FLOOR PLAN LEVEL 08	
SCALE 1:100 @ A1	JOB NO 1846-3
DATE 11.05.2024	DWG NO 1846-3-02-FSC
CHECKED BY	REV A

Level 08 - Floor Layout Plan
1 : 100