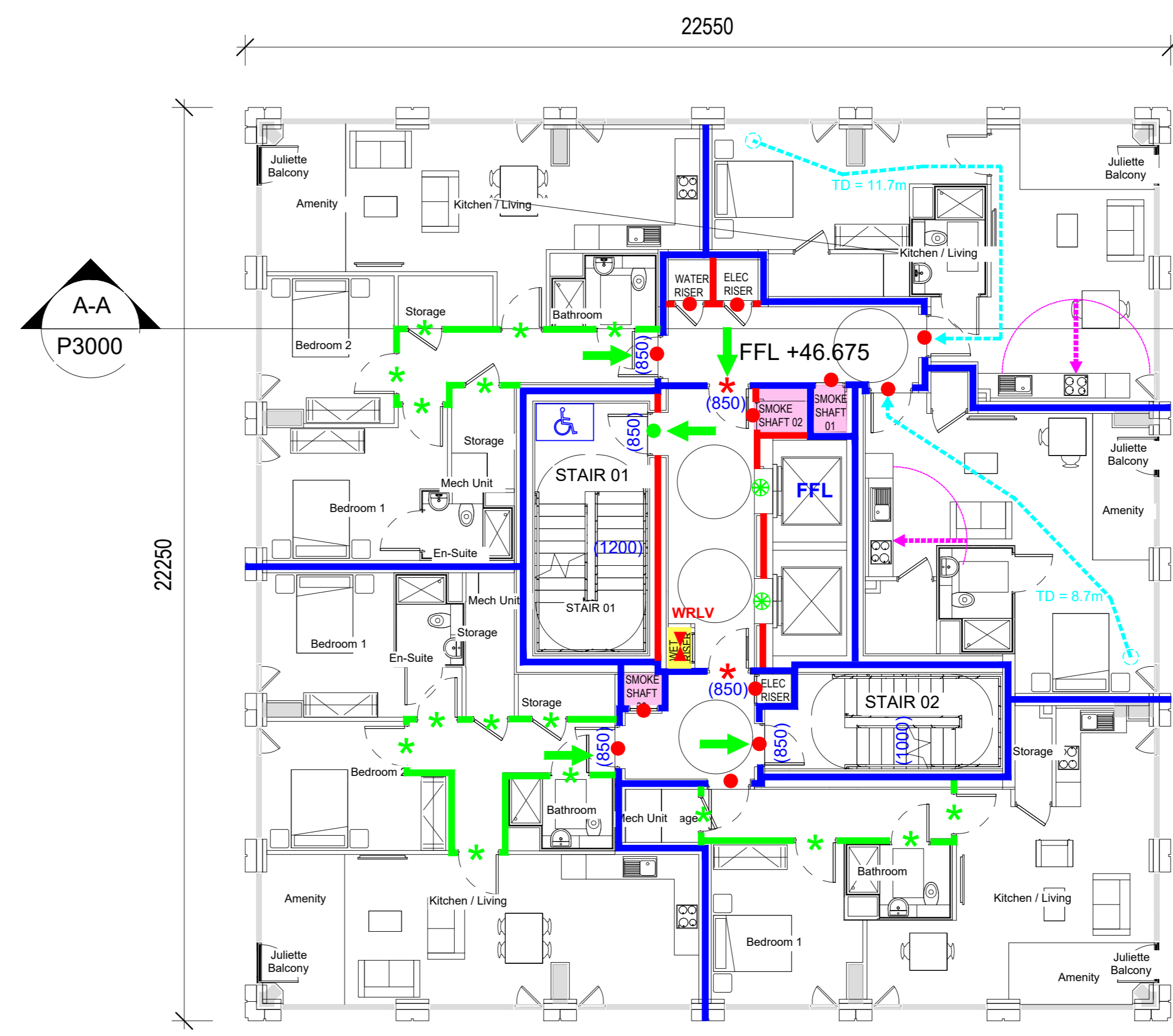


1 Level 12 - Floor Layout Plan
1 : 100



2 Level 13 - Floor Layout Plan
1 : 100

LEGEND

- Compartment wall/door/curtain achieving 240 minutes fire resistance rating (stability, integrity and insulation) in accordance with BS 476 Part 8:2024 or EBC24 or EBC24 (C) or EBC24 (D) or EBC24 (E) or EBC24 (F) or EBC24 (G) or EBC24 (H) or EBC24 (I) or EBC24 (J) or EBC24 (K) or EBC24 (L) or EBC24 (M) or EBC24 (N) or EBC24 (O) or EBC24 (P) or EBC24 (Q) or EBC24 (R) or EBC24 (S) or EBC24 (T) or EBC24 (U) or EBC24 (V) or EBC24 (W) or EBC24 (X) or EBC24 (Y) or EBC24 (Z)
- Compartment wall/door/curtain achieving 120 minutes fire resistance rating (stability, integrity and insulation) in accordance with BS 476 Part 8:2024 or EBC24 or EBC24 (C) or EBC24 (D) or EBC24 (E) or EBC24 (F) or EBC24 (G) or EBC24 (H) or EBC24 (I) or EBC24 (J) or EBC24 (K) or EBC24 (L) or EBC24 (M) or EBC24 (N) or EBC24 (O) or EBC24 (P) or EBC24 (Q) or EBC24 (R) or EBC24 (S) or EBC24 (T) or EBC24 (U) or EBC24 (V) or EBC24 (W) or EBC24 (X) or EBC24 (Y) or EBC24 (Z)
- Compartment wall/door/curtain achieving 60 minutes fire resistance rating (stability, integrity and insulation) in accordance with BS 476 Part 8:2024 or EBC24 or EBC24 (C) or EBC24 (D) or EBC24 (E) or EBC24 (F) or EBC24 (G) or EBC24 (H) or EBC24 (I) or EBC24 (J) or EBC24 (K) or EBC24 (L) or EBC24 (M) or EBC24 (N) or EBC24 (O) or EBC24 (P) or EBC24 (Q) or EBC24 (R) or EBC24 (S) or EBC24 (T) or EBC24 (U) or EBC24 (V) or EBC24 (W) or EBC24 (X) or EBC24 (Y) or EBC24 (Z)
- Fire resisting wall/door/curtain achieving 30 minutes fire resistance rating (stability, integrity and insulation) in accordance with BS 476 Part 8:2024 or EBC24 or EBC24 (C) or EBC24 (D) or EBC24 (E) or EBC24 (F) or EBC24 (G) or EBC24 (H) or EBC24 (I) or EBC24 (J) or EBC24 (K) or EBC24 (L) or EBC24 (M) or EBC24 (N) or EBC24 (O) or EBC24 (P) or EBC24 (Q) or EBC24 (R) or EBC24 (S) or EBC24 (T) or EBC24 (U) or EBC24 (V) or EBC24 (W) or EBC24 (X) or EBC24 (Y) or EBC24 (Z)
- Fire resisting door set to have not less than 60 minutes integrity rating in accordance with BS 476 Part 8:2024 or EBC24 or EBC24 (C) or EBC24 (D) or EBC24 (E) or EBC24 (F) or EBC24 (G) or EBC24 (H) or EBC24 (I) or EBC24 (J) or EBC24 (K) or EBC24 (L) or EBC24 (M) or EBC24 (N) or EBC24 (O) or EBC24 (P) or EBC24 (Q) or EBC24 (R) or EBC24 (S) or EBC24 (T) or EBC24 (U) or EBC24 (V) or EBC24 (W) or EBC24 (X) or EBC24 (Y) or EBC24 (Z)
- Fire resisting door set to have not less than 30 minutes integrity rating in accordance with BS 476 Part 8:2024 or EBC24 or EBC24 (C) or EBC24 (D) or EBC24 (E) or EBC24 (F) or EBC24 (G) or EBC24 (H) or EBC24 (I) or EBC24 (J) or EBC24 (K) or EBC24 (L) or EBC24 (M) or EBC24 (N) or EBC24 (O) or EBC24 (P) or EBC24 (Q) or EBC24 (R) or EBC24 (S) or EBC24 (T) or EBC24 (U) or EBC24 (V) or EBC24 (W) or EBC24 (X) or EBC24 (Y) or EBC24 (Z)
- ★ Fire resisting door set to have not less than 30 minutes integrity and insulation rating in accordance with BS 476 Part 8:2024 or EBC24 or EBC24 (C) or EBC24 (D) or EBC24 (E) or EBC24 (F) or EBC24 (G) or EBC24 (H) or EBC24 (I) or EBC24 (J) or EBC24 (K) or EBC24 (L) or EBC24 (M) or EBC24 (N) or EBC24 (O) or EBC24 (P) or EBC24 (Q) or EBC24 (R) or EBC24 (S) or EBC24 (T) or EBC24 (U) or EBC24 (V) or EBC24 (W) or EBC24 (X) or EBC24 (Y) or EBC24 (Z)
- ★ Fire resisting door set to have not less than 30 minutes integrity and insulation rating in accordance with BS 476 Part 8:2024 or EBC24 or EBC24 (C) or EBC24 (D) or EBC24 (E) or EBC24 (F) or EBC24 (G) or EBC24 (H) or EBC24 (I) or EBC24 (J) or EBC24 (K) or EBC24 (L) or EBC24 (M) or EBC24 (N) or EBC24 (O) or EBC24 (P) or EBC24 (Q) or EBC24 (R) or EBC24 (S) or EBC24 (T) or EBC24 (U) or EBC24 (V) or EBC24 (W) or EBC24 (X) or EBC24 (Y) or EBC24 (Z)
- ★ Fire resisting fire landing door achieving not less than 30 minutes integrity rating in accordance with BS 476 Part 8:2024 or EBC24 or EBC24 (C) or EBC24 (D) or EBC24 (E) or EBC24 (F) or EBC24 (G) or EBC24 (H) or EBC24 (I) or EBC24 (J) or EBC24 (K) or EBC24 (L) or EBC24 (M) or EBC24 (N) or EBC24 (O) or EBC24 (P) or EBC24 (Q) or EBC24 (R) or EBC24 (S) or EBC24 (T) or EBC24 (U) or EBC24 (V) or EBC24 (W) or EBC24 (X) or EBC24 (Y) or EBC24 (Z)
- Doubled refuge space (min 1400mm x 2000mm) in accordance with BS 5596.
- (XXXX) Dimensions refer to:
a) minimum aggregate opening clear width of doors or
b) width of junction measured between finished surface of walls or other floor
c) clear width of opening measured between finished surface of walls or other floor
d) clear width of opening measured between finished surface of walls or other floor
e) clear width of opening measured between finished surface of walls or other floor
- > Indicates designated exits / direction of escape.
- Travel Distance in meters.
- FFL Finished Floor Level
- FFL + 46.675 Finished Floor Level
- WRLV Landing valve on wet rising fire conforming with BS 91:2020.
- WRTI Wet to replace well raise tank.
- Floor fire stopped at floor level rating of the floor.
- Shading devices area outside the scope of this application.
- Mechanically Ventilated Smoke Shaft.
- 1.800 1.8m separation distance from main kitchen cooking appliance.

FSC Application

| | |
|---|--|
| MINOR AMENDMENTS | 15.05.2024 |
| REV. DESCRIPTION | DATE |
| MSA | |
| Michael Slattery Associates | |
| Fire Safety Engineers | |
| www.msa.ie | |
| 19 Windsor Place Lower Pembroke Place Dublin 2, Ireland Tel: +353(1)6765713 Fax: +353(1)6785247 | > Building Design & Construction > Fire Engineering Design > Event Safety & Management > Building Fire Safety Management > Disabled Access Consultancy > Computer Modelling |
| PROJECT: ALBERT QUAY BUILDING | |
| FIRE SAFETY CERTIFICATE | |
| TITLE: TWELFTH & THIRTEENTH FLOOR PLAN | |
| SCALE: 1/100 @ A0 | JOB NO: 18446-3 |
| DATE: 11.03.2024 | DWG NO: 18446-3-IS-FSC |
| CHECKED BY: | REV: A |