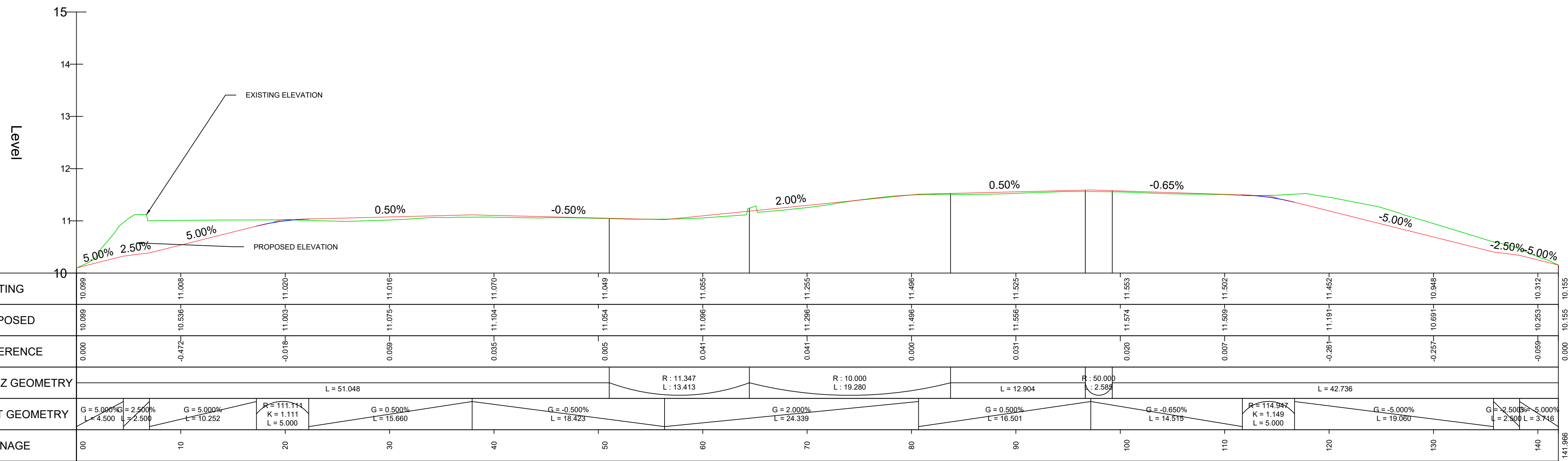
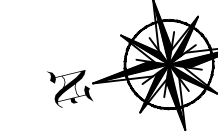


DRAWING IS PRODUCED USING THE IRISH TRANSVERSE MERCATOR GEOGRAPHIC COORDINATE SYSTEM

A1

LEGEND

- PROPOSED GRADE (PROFILE VIEW)
- EXISTING GRADE (PROFILE VIEW)



PROFILE VIEW  
H 1:250  
V 1:50

Rev	Description	Drawn	Checked	Date
P01	ISSUED FOR PART 8 PLANNING	TP	BD	14/01/25

Clifton Scannell Emerson Associates Limited  
Consulting Engineers,  
3rd Floor The Highline,  
Bakers Point, Pottery Road,  
Dun Laoghaire, Co. Dublin,  
Ireland, A96 KW29

T. +353 1 288 5006  
F. +353 1 283 3406  
E. info@csea.ie  
W. www.csea.ie

Client: NATIONAL TRANSPORT AUTHORITY

Project: BLACK ASH PARK AND RIDE - BUS INTERCHANGE

Dwg. Title: LONGSECTION (BUS INTERCHANGE)

Drawn By: TP Date: JAN 25 20\_008Z

Checked By: BD AS INDICATED@A1 Scale: CSEA Job No.

Project Code: 20\_008Z - CSE - GEN - XX - DR - XX - 2212

S2 ISSUED FOR INFORMATION

Status Code: S2 Suitability Description

P01 PLANNING

Revision: P01 Project Status