

NOTES:

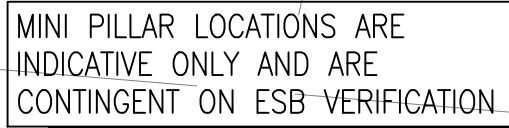
ANY DISCREPANCIES OR OMISSIONS TO BE REPORTED TO ENX IMMEDIATELY.

DO NOT SCALE - WORK FROM FIGURED DIMENSIONS ONLY.

THIS DRAWING TO BE READ IN CONJUNCTION WITH ALL CIVIL ENGINEERS, STRUCTURAL ENGINEERS, ARCHITECTS & ALL OTHER RELEVANT DRAWINGS & SPECIFICATIONS RELATING TO THE PROJECT.

ALL DIMENSIONS TO BE CONFIRMED ON SITE.

THIS DRAWING IS THE PROPERTY OF ENX AND IT OR ITS CONTENTS CANNOT BE COPIED, REPRODUCED OR OTHERWISE USED WITHOUT THE PERMISSION & CONSENT OF ENX. ©



DENOTES PUBLIC COLUMN EV  
CHARGE POINT COMPLETE WITH  
INTEGRATED NEUTRALISING POINT



FUTURE EV COLUMN LOCATION CAPPED FOR  
FUTURE INSTALLATION BY OTHERS (ENSURE  
500MM CLEARANCE FROM PARKING BAY)



INDICATIVE ESB MINI-PILLAR LOCATION  
TO BE CONFIRMED BY ESB



CUSTOMER METER PILLAR LOCATION

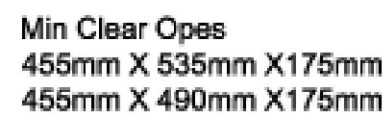


125mmØ STANDARD ESB RED BAND DUCT AS PER  
ESB DETAILS

125mm $\phi$  STANDARD ESB RED BAND DUCT AS  
PER ESB DETAILS WITH 90mm $\phi$  REDUCER TO  
EV STATION

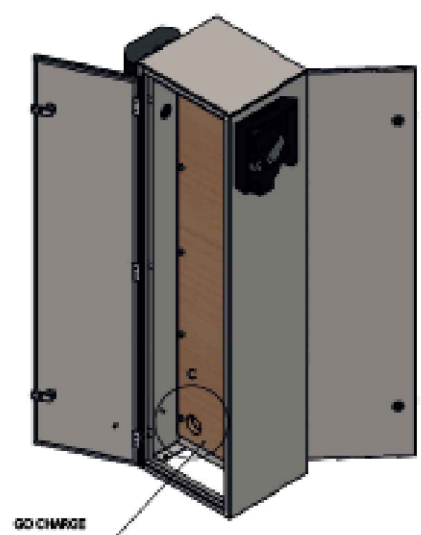


125mmØ STANDARD ESB RED BAND DUCT AS  
PER ESB DETAILS WITH 90mmØ REDUCER  
CAPPED FOR FUTURE INSTALLATION BY OTHERS



Section B-B

## ESB - EV CHARGING DUCTING ARRANGEMENTS



### COMBINED EV CHARGE POINT AND NEUTRALISING POINT

00	ISSUED FOR INFORMATION & COMMENT	23-08-2024
REV No.	DESCRIPTION	DATE

Mechanical, Electrical &amp; Energy Consultants



Block 5,  
High Street,  
Dublin 24, D24 YK8N

Phone: +353 1 532 1578  
e-mail: info@enx.ie  
Web: [www.enx.com](http://www.enx.com)

PROJECT/CLIENT:

## Residential Development at Mahon For Clúid

ARCHITECT:

++  
PLUS ARCHITECTURE

**DRAWING TITLE:**

## Site Services Layouts EV Charging

**DRAWING REFERENCE**  
**3200[60]03**

**DATE:**  
**AUG '24**

**DRAWN**  
**DC**

**SCALE @ A1/A3**  
**250/500**