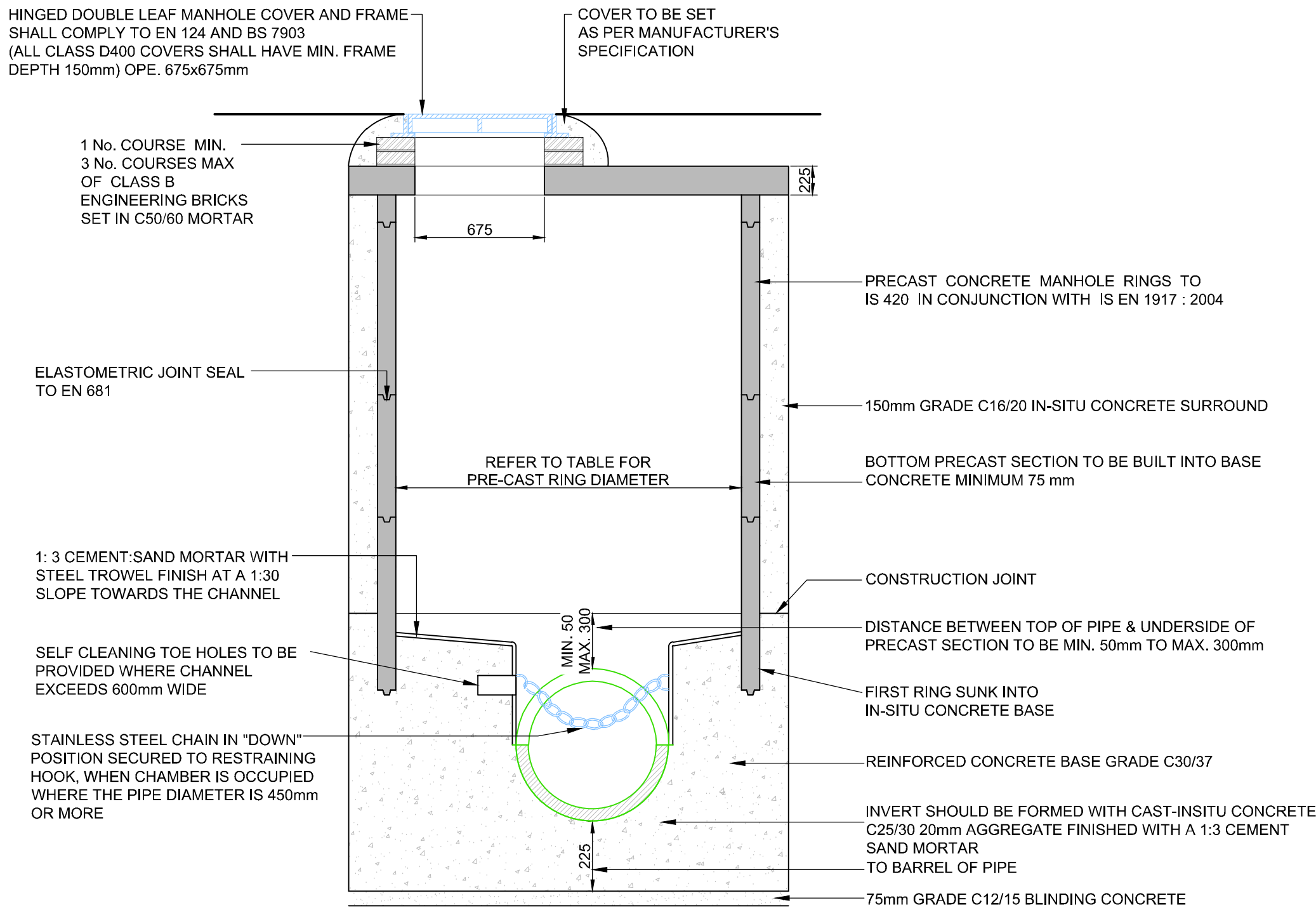
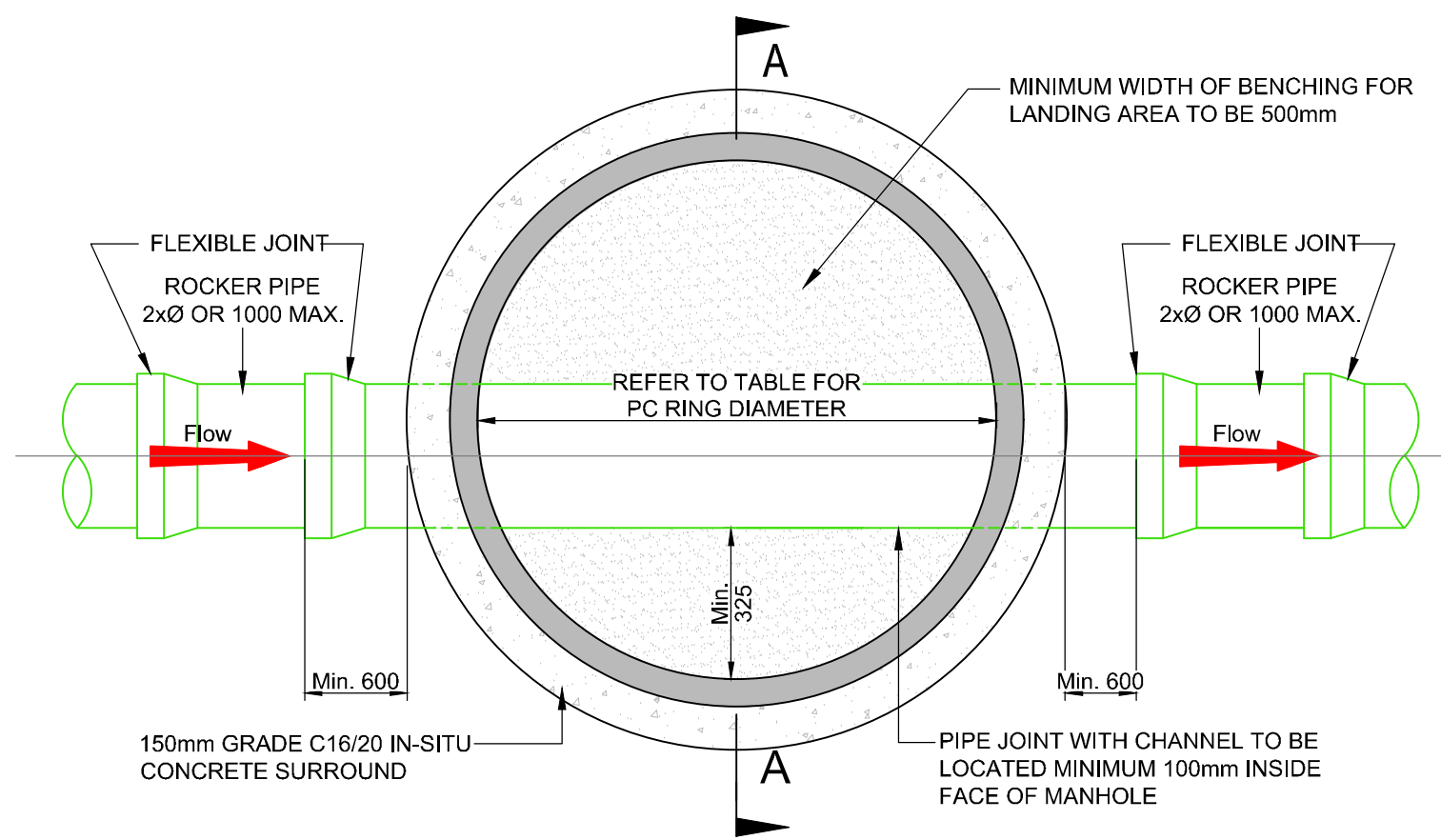


1. ALL DIMENSIONS ARE IN MILLIMETRES (mm) UNLESS NOTED OTHERWISE.
2. PRE-CAST MANHOLES UNITS: COMPLYING WITH REQUIREMENTS OF IS EN 1917 AND BS 5911-PART 3.
3. THICKER MANHOLE BASES REQUIRED FOR SEWERS IN EXCESS OF 3m DEEP WHERE THE SIZE IS GREATER THAN THE STANDARD MINIMUM SIZE.
4. APPROVED PRE-CAST CONCRETE BASES MAY BE USED INCORPORATING CHANNELS, BENCHING ETC. SUBJECT TO IRISH WATER APPROVAL AND COMPLYING WITH BS 5911-PART 4 2002.
5. STRUCTURAL DESIGN AND REINFORCEMENT DETAILS TO BE PROVIDED BY THE DEVELOPER AND SUBMITTED TO IRISH WATER FOR REVIEW.
6. MANHOLES GREATER THAN 3m IN DEPTH WILL REQUIRE A DETAILED STRUCTURAL DESIGN AND BE SUBJECT TO IRISH WATER APPROVAL.
7. MANHOLE ROOFS SHOULD CONSIST OF RE-INFORCED CONCRETE SLAB OF IN-SITU CONCRETE, C30/37, WITH A MINIMUM THICKNESS OF 225mm DESIGNED TO CARRY ALL LIVE AND DEAD LOADS, ALTERNATIVELY, APPROVED PRE-CAST CONCRETE ROOF SLABS MAY BE USED SUBJECT TO IRISH WATER APPROVAL AND COMPLIANCE WITH BS 5911 PART 4 : 2002.
8. COVERS AND FRAMES SHALL BE SUITABLE FOR ROAD AND TRAFFIC CONDITIONS SUBJECT TO APPROVAL FROM IRISH WATER.
9. 200mm ALL AROUND, 100mm DEEP CONCRETE PLINTH WITH PROTECTIVE STAINLESS STEEL METAL BAND AROUND COVERS IN GREEN AREAS.
10. ALL CHAMBERS TO BE CHECKED FOR UPLIFT BY THE DEVELOPER BASED ON GROUND CONDITIONS WITHIN THE SITE. SHOULD ANTI FLOATATION MEASURES BE REQUIRED THEY SHALL BE SUBJECT TO APPROVAL FROM IRISH WATER.
11. ALL CONCRETE TO BE IN ACCORDANCE WITH IS EN 206 : 2013.



SECTION A-A

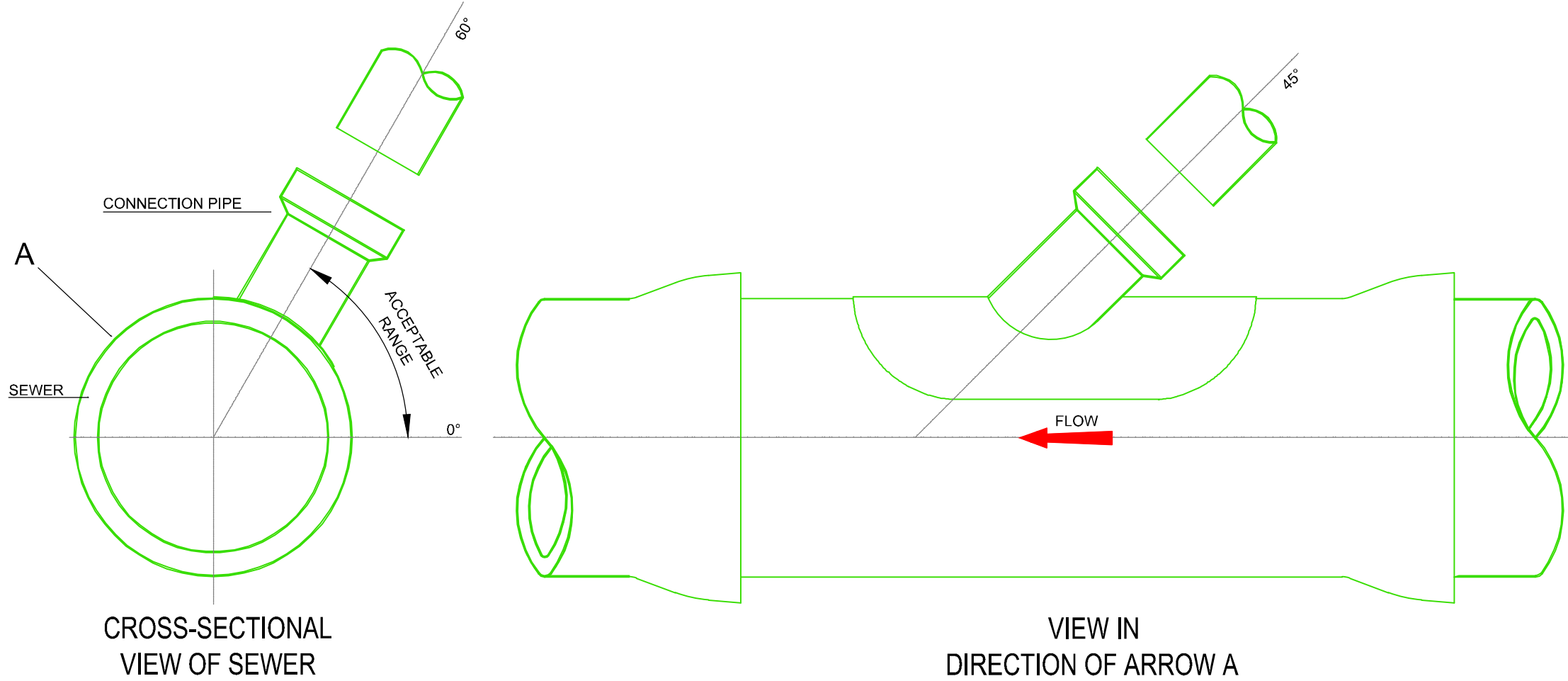


PLAN

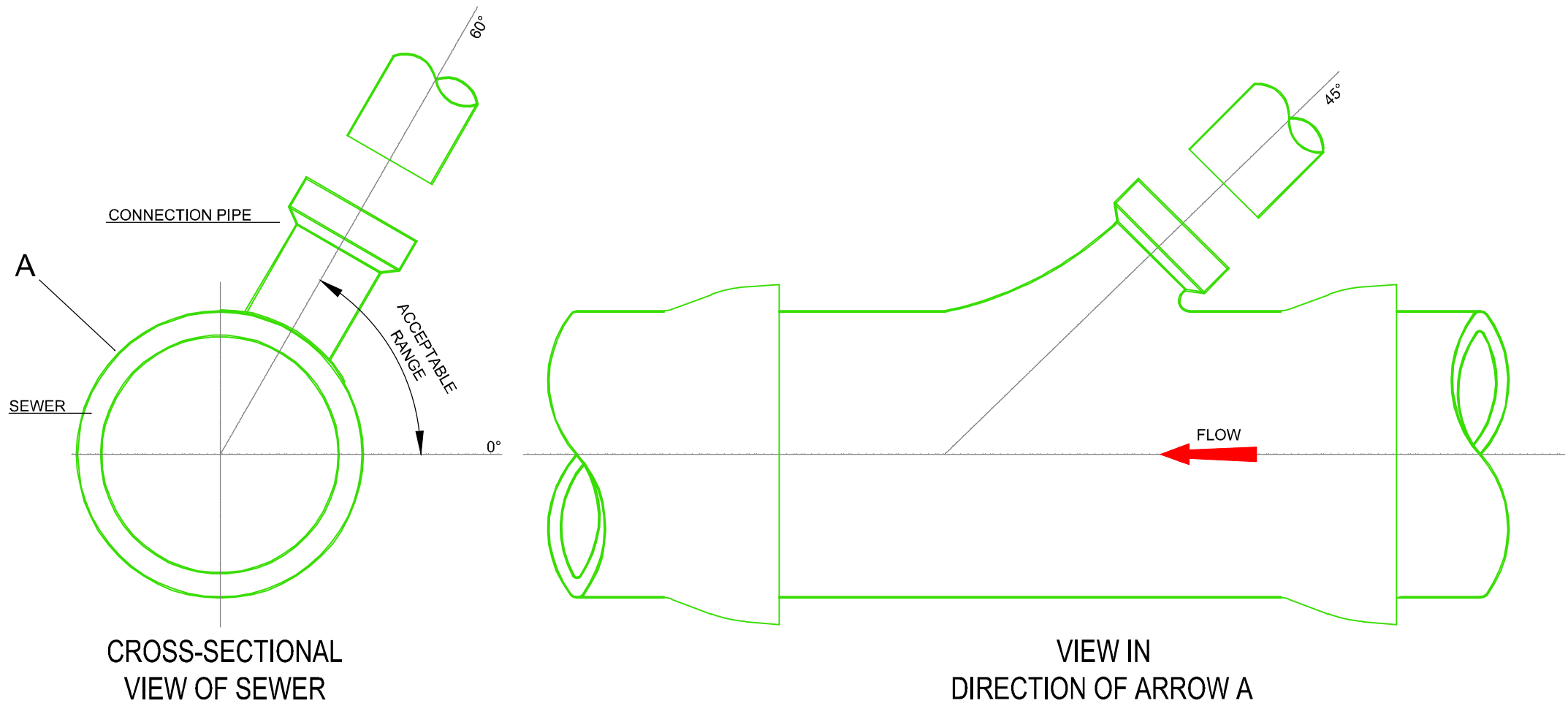
MINIMUM MANHOLE DIAMETERS	
DIAMETER OF LARGEST PIPE IN MANHOLE (mm)	INTERNAL DIAMETER OF MANHOLE (mm)
LESS THAN 375	1200
375 TO 450	1350
500 TO 700	1500

PRE-CAST CONCRETE MANHOLE

1. ALL DIMENSIONS ARE IN MILLIMETRES (mm) UNLESS NOTED OTHERWISE.
2. AS FAR AS PRACTICABLE, JUNCTIONS AND SERVICE CONNECTIONS SHALL BE BUILT IN FOR ALL PLANNED USERS WHEN THE SEWER IS BEING CONSTRUCTED. WHERE IT IS NECESSARY TO MAKE A POST-CONSTRUCTION CONNECTION THE DEVELOPER SHALL BRING THE SEWER TO THE INSPECTION CHAMBER, INSTALL THE INSPECTION CHAMBER AND SEAL THE UPSTREAM END UNTIL THE CONNECTION IS REQUIRED.
3. THE VERTICAL ANGLE BETWEEN THE SERVICE CONNECTING PIPE AND THE HORIZONTAL SHALL BE GREATER THAN 0° AND NOT MORE THAN 60°.
4. WHERE THE CONNECTION IS BEING MADE TO A SEWER WITH A NOMINAL INTERNAL DIAMETER OF 300mm DIAMETER OR LESS, CONNECTIONS SHALL BE MADE USING 45° ANGLE JUNCTIONS.
5. WHERE THE CONNECTION IS BEING MADE TO A SEWER WITH A NOMINAL INTERNAL DIAMETER GREATER THAN 300mm :
 - A) WHERE THE DIAMETER OF THE CONNECTING PIPE IS GREATER THAN HALF THE DIAMETER OF THE SEWER, AN ACCESS MANHOLE SHALL BE CONSTRUCTED TO FORM THE CONNECTION POINT; OR
 - B) WHERE THE DIAMETER OF THE CONNECTING PIPE IS LESS THAN OR EQUAL TO HALF THE DIAMETER OF THE SEWER, THEN THE CONNECTION SHALL BE MADE USING A PREFORMED SADDLE FITTING WITH A SLOW BEND BETWEEN THE SADDLE AND THE CONNECTING SEWER/DRAIN .
6. CONNECTIONS MADE WITH SADDLE FITTINGS SHALL BE MADE BY CUTTING AND SAFELY REMOVING A CORE FROM THE PIPE AND JOINTING THE SADDLE FITTING TO THE PIPE IN ACCORDANCE WITH THE MANUFACTURER'S INSTRUCTIONS TO ENSURE A WATERTIGHT JOINT. THE CONNECTING PIPE SHALL NOT PROTRUDE INTO THE SEWERS.



45° SADDLE CONNECTION



45° JUNCTION



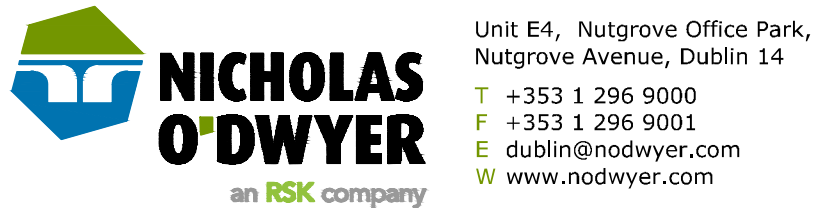
TITLE		SCALE	DATE
TYPICAL SEWER/SERVICE PIPE CONNECTION		NOT TO SCALE	MAY 2015
		DRAWING No.	REV
		STD-WW-04	-

NOTES

1. ALL MEASUREMENTS AND LEVELS ARE EXPRESSED IN METERS, UNLESS OTHERWISE SPECIFIED.
2. ALL LEVELS ARE REFERENCED TO THE MALIN HEAD DATUM.
3. THE COORDINATE SYSTEM IS BASED ON THE IRISH TRANSVERSE MERCATOR
4. REFER TO ARCHITECTURAL LAYOUTS FOR CLIENT OWNERSHIP BOUNDARY AND BUILDING DIMENSIONS.
5. FOUL SEWER MATERIAL TO BE UPVC AND IN ACCORDANCE TO IRISH WASTEWATER CODE OF PRACTICE.
6. COVER TO FOUL SEWER MAIN TO BE MINIMUM 1.2M UNDER ROADS AND 0.9M UNDER GRASSED AREAS AND FOOTPATHS TO BE 150MM CONCRETE.
7. ALL COVERS IN PUBLIC AREAS TO BE D400 COVER AND FRAME UNLESS OTHERWISE NOTED.
8. ALL MATERIALS PROPOSED FOR USE ON SITE TO BE APPROVED PRIOR TO ARRIVAL ON SITE.

P01	21.08.2024	ISSUED FOR INFORMATION	K.Lim	N.S.	N.S.
REV	DATE	DESCRIPTION	D	C	A
PROJECT No.		STAGE			
80192		PLANNING			

COPYRIGHT RESERVED - THIS DRAWING IS NOT TO BE USED FOR A PURPOSE OTHER THAN THAT FOR WHICH IT HAS BEEN ISSUED BY NICHOLAS O'DWYER LTD. NOR IS IT TO BE COPIED OR REPRODUCED IN ANY MANNER WITHOUT WRITTEN CONSENT.



CLIENT	
PROJECT	
CLUID HOUSING MAHON	

TITLE	
FOUL SEWER STANDARD DETAILS SHEET 1	

SCALES @ A1	DRAWN	CHECKED	APPROVED
NOT TO SCALE	K. Lim	N. Skelton	N. Skelton
	DATE 21.08.2024	DATE 21.08.2024	DATE 21.08.2024
SUITABILITY CODE	SUITABILITY DESCRIPTION		
S2	FOR INFORMATION		
DRAWING No.		REVISION	
80192-NOD-01-XX-DR-C-08310		P01	