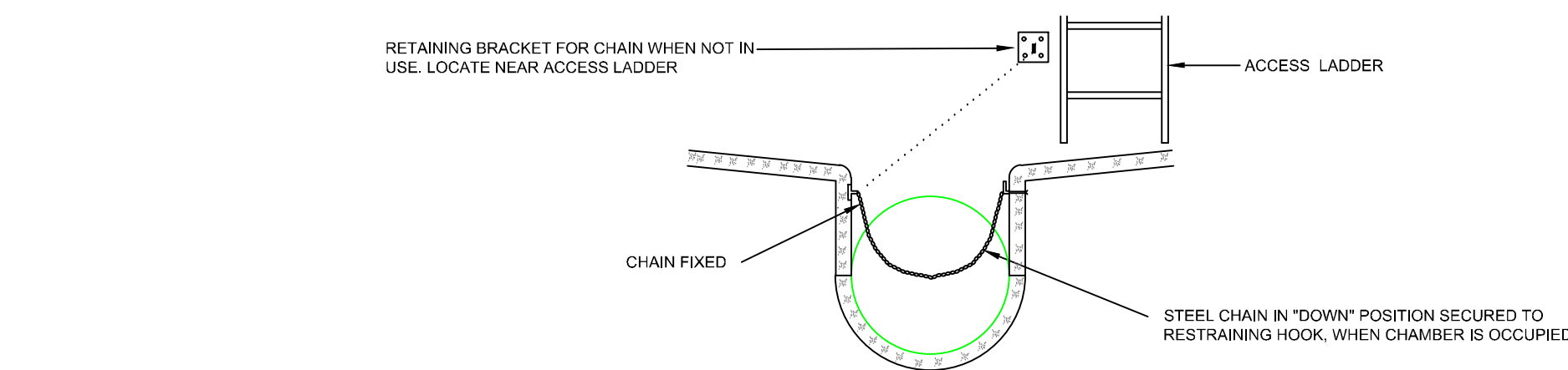


DETAIL OF SAFETY BAR

DETAIL OF BACK-DROP TO MANHOLE



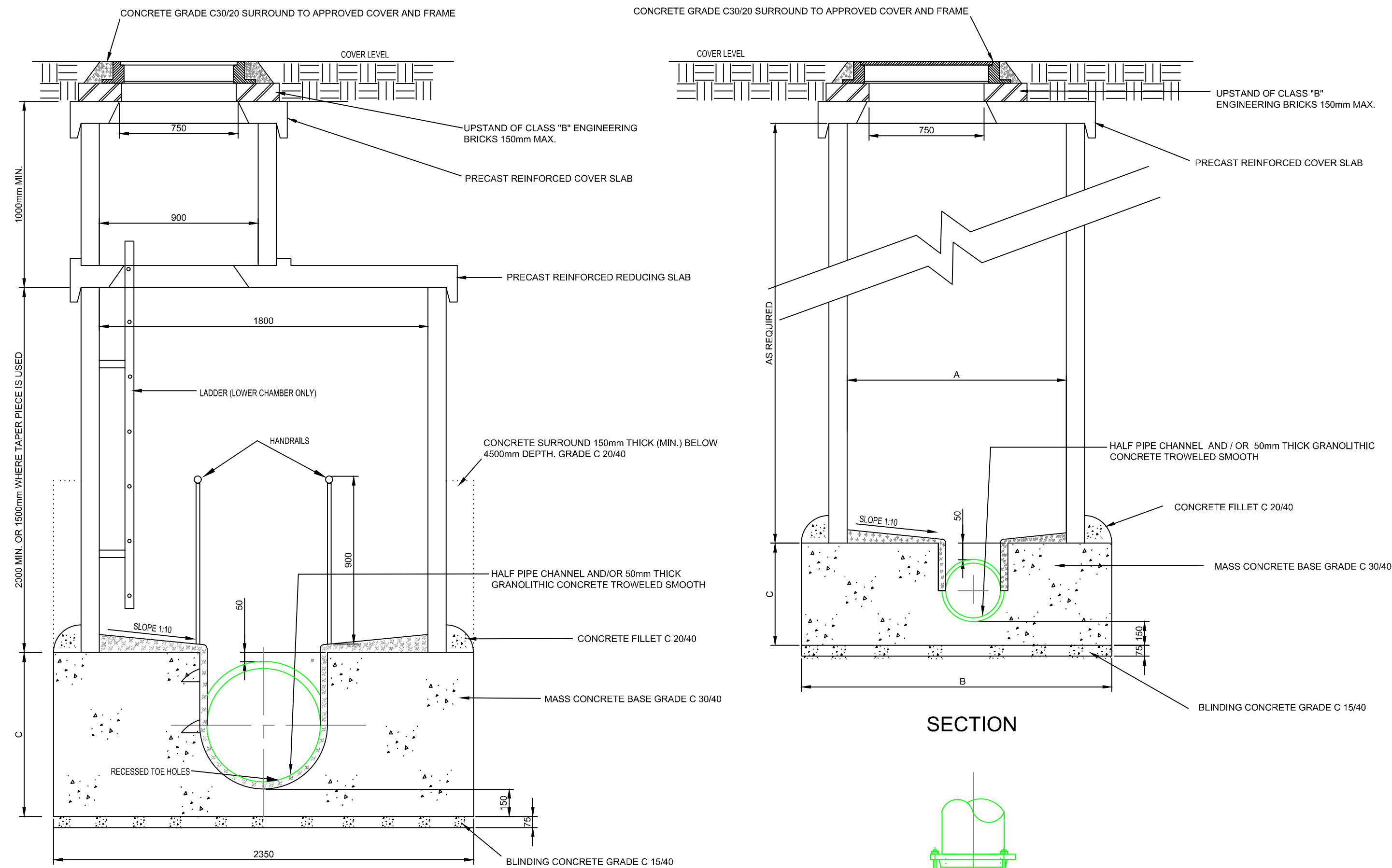
SECTION
DETAIL OF SAFETY CHAIN

TABLE OF DIMENSIONS

MANHOLE TYPE NUMBER	EXIT PIPE DIAMETER	MAXIMUM DEPTH TO INVERT mm	MANHOLE CHANNEL CONFIGURATION	MANHOLE CHAMBER DIAMETER - A mm	MANHOLE BASE DIA. - B mm	HEIGHT OF MH. BASE - C mm	NOTES
TYPE 1	A UP TO 350 DIA.	3650	ALL ARRANGEMENTS	1200 DIA.	1700 DIA.	EXIT PIPE DIA. + 275	SEE DETAIL NOTES : 1 - 4
	B 375-800 DIA.	4100	1) STRAIGHT THROUGH 2) CURVED CHANNEL<45°	1500 DIA.	2000 DIA.	EXIT PIPE DIA. + 325	DITTO : 1 - 7
	C 375-600 DIA.	3900	3) CURVED CHANNEL>45° 4) JUNCTION	1500 DIA.	2000 DIA.	EXIT PIPE DIA. + 300	DITTO : 1 - 7
	D 675-1100 DIA.	4300	1) STRAIGHT THROUGH 2) CURVED CHANNEL<45°	1800 DIA.	2350 DIA.	EXIT PIPE DIA. + 350	DITTO : 1 - 7
	E 675-900 DIA.	4200	3) CURVED CHANNEL>45° 4) JUNCTION	1800 DIA.	2350 DIA.	EXIT PIPE DIA. + 350	DITTO : 1 - 7
TYPE 2	A UP TO 350 DIA.	3650 - 6350	ALL ARRANGEMENTS	1800 DIA.	2350 DIA.	EXIT PIPE DIA. + 275	SEE DETAIL NOTES : 1 - 4 & 8
	B 375-800 DIA.	4100 - 6500	1) STRAIGHT THROUGH 2) CURVED CHANNEL<45°	1800 DIA.	2350 DIA.	EXIT PIPE DIA. + 325	DITTO : 1 - 8
	C 375-600 DIA.	3900 - 6500	3) CURVED CHANNEL>45° 4) JUNCTION	1800 DIA.	2350 DIA.	EXIT PIPE DIA. + 300	DITTO : 1 - 8
	D 675-1100 DIA.	4300 - 6850	1) STRAIGHT THROUGH 2) CURVED CHANNEL<45°	1800 DIA.	2350 DIA.	EXIT PIPE DIA. + 350	DITTO : 1 - 8
	E 675-900 DIA.	4200 - 6750	3) CURVED CHANNEL>45° 4) JUNCTION	1800 DIA.	2350 DIA.	EXIT PIPE DIA. + 350	DITTO : 1 - 8

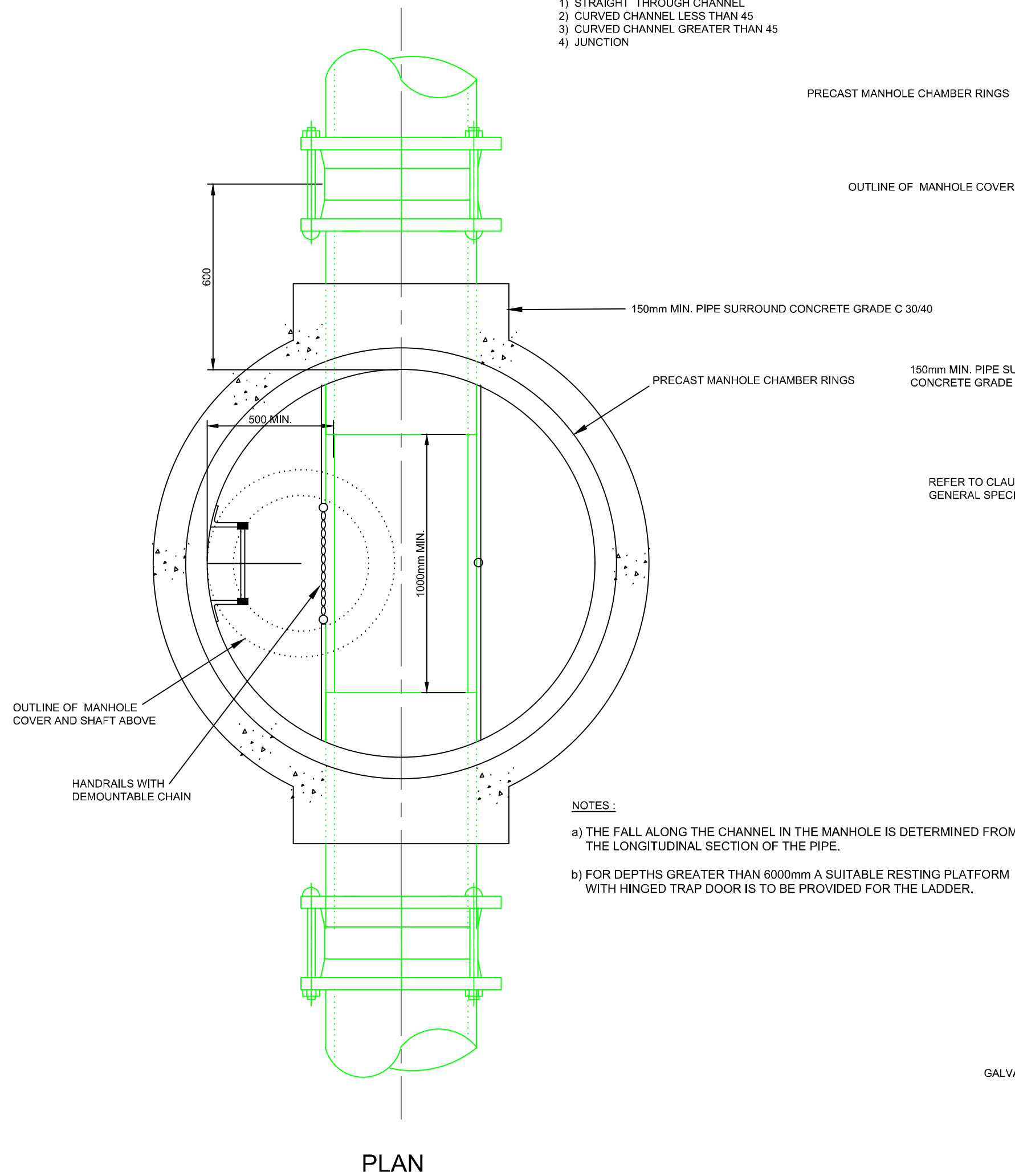
DETAIL NOTES

- FOR BEDDING AND SEALING OF CHAMBER RINGS - THE TOP RING (TO P.C. COVER SLAB) AND BOTTOM RING TO BE BEDDED WITH CEMENT MORTAR. FOR INTERMEDIATE RINGS, JOINTS TO BE SEALED WITH EITHER APPROVED PREFORMED JOINTING STRIP OR BY LIBERALLY COATING THE FACES OF THE JOINTS WITH APPROVED BITUMINOUS MATERIAL PRIOR TO BEING POSITIONED : SURPLUS MATERIAL TO BE NEATLY STRUCK OFF.
- ENTRY AND EXIT PIPES TO BE BUILT IN MONOLITHICALLY WITH THE MANHOLE AND THE MANHOLE MADE WATERTIGHT.
- BRANCH BENDS TO BE CURVED IN THE DIRECTION OF FLOW.
- THE DESIGN OF ALL DEEP MANHOLES (>3M DEEP) IS SUBJECT TO APPROVAL.
- PROVIDE RECESSED TOE HOLES IN CHANNELS OVER 150mm IN DEPTH. (SEE TYPE 2 MANHOLE)
- FOR 600mm DIA. EXIT PIPES AND OVER, A SAFETY BAR OR CHAIN IS TO BE PROVIDED. (BOTH AS DETAILED)
- FOR 600mm DIA. EXIT PIPES AND OVER, PROVIDE 25mm GALVANISED SOLID BAR HANDRAILS WITH CHAIN - ONE END DEMOUNTABLE - AT EDGES OF BENCHING. (SEE TYPE2 MANHOLE)

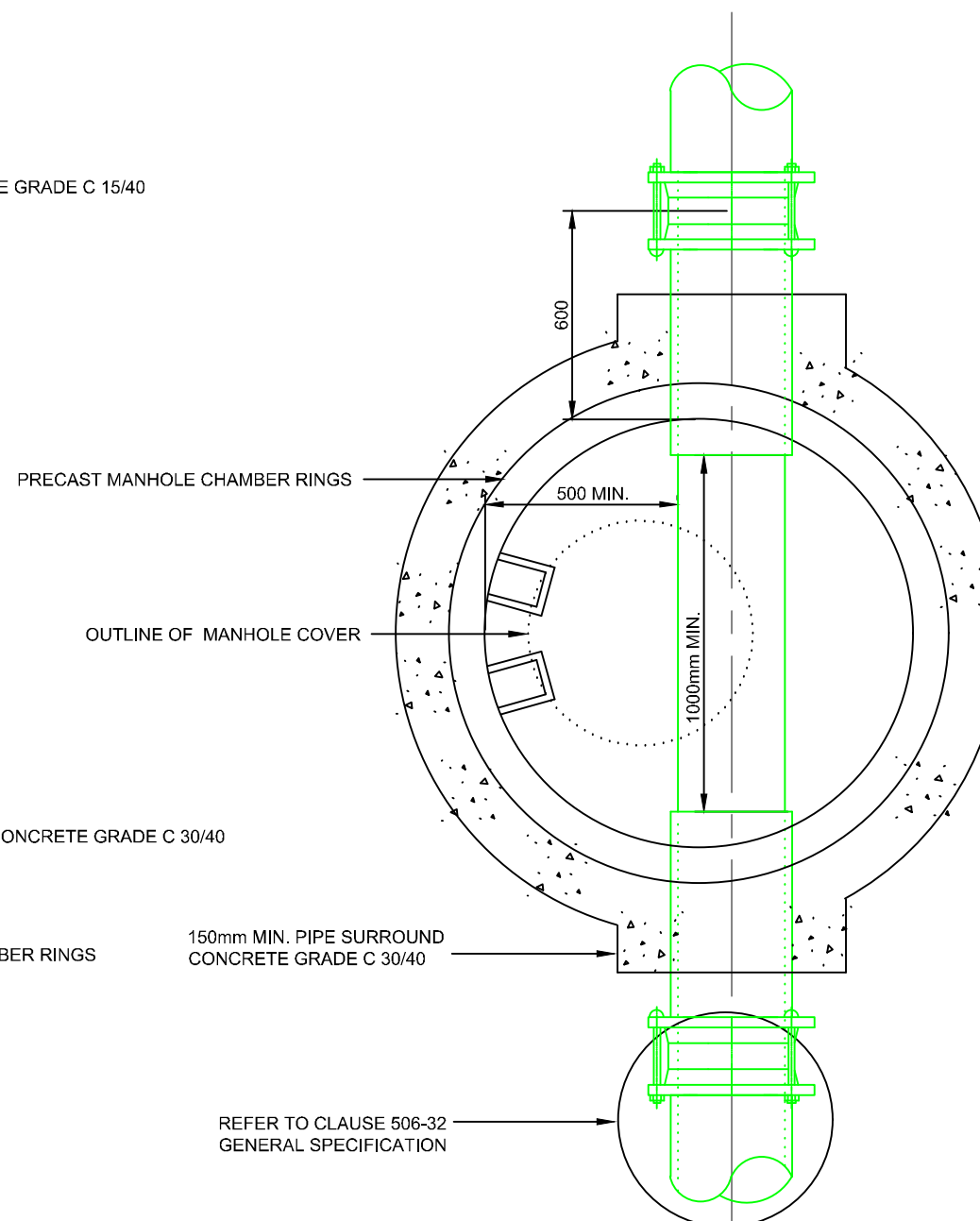


SECTION

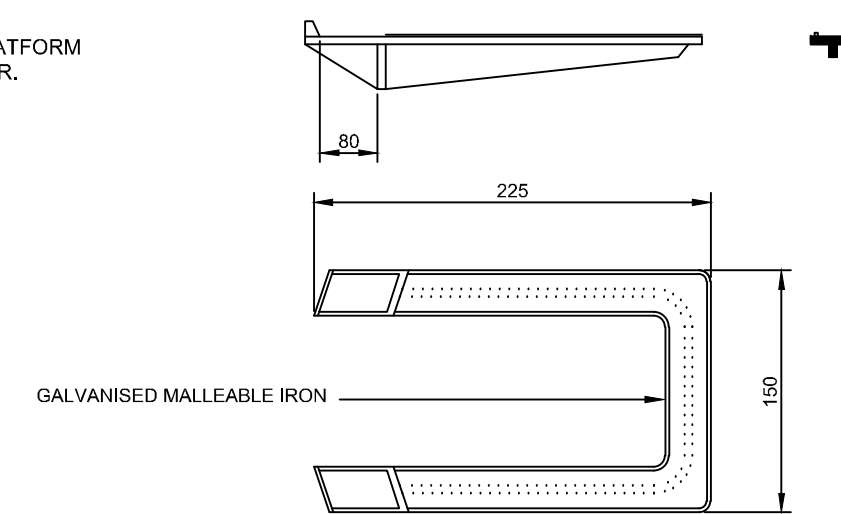
- WHERE STATED IN TABLE BELOW MANHOLE THESE TYPES ARE SUITABLE FOR -
- STRAIGHT THROUGH CHANNEL
 - CURVED CHANNEL LESS THAN 45°
 - CURVED CHANNEL GREATER THAN 45°
 - JUNCTION



PLAN
MANHOLE TYPE 2



PLAN
MANHOLE TYPE 1




DETAIL OF STEP IRON

NOTES

- ALL DIMENSIONS IN MILLIMETRES UNLESS STATED OTHERWISE.
- ALL MANHOLES TO HAVE A 150mm THICK CONCRETE SURROUND REGARDLESS OF DEPTH OR DIAMETER.
- THESE STANDARD DETAILS ALSO APPLY TO FOUL DRAINAGE WITHIN THE SCHOOL SITE.

P01	21.08.2024	ISSUED FOR INFORMATION	K. Lim	N.S.	N.S.
REV	DATE	DESCRIPTION	D	C	A
PROJECT No. 80192		STAGE PLANNING			

COPYRIGHT RESERVED - THIS DRAWING IS NOT TO BE USED FOR A PURPOSE OTHER THAN THAT FOR WHICH IT HAS BEEN ISSUED BY NICHOLAS O'DWYER LTD. NOR IS IT TO BE COPIED OR REPRODUCED IN ANY MANNER WITHOUT WRITTEN CONSENT.



Unit E4, Nutgrove Office Park,
Nutgrove Avenue, Dublin 14
T +353 1 296 9000
F +353 1 296 9001
E dublin@nodwyer.com
W www.nodwyer.com

CLIENT



T +353 1 707 2088
E cluid@cluid.ie

PROJECT
CLUID HOUSING MAHON

TITLE
SURFACE WATER
STANDARD DETAILS
SHEET 1

SCALES @ A1	DRAWN K. Lim	CHECKED N. Skelton	APPROVED N. Skelton
NOT TO SCALE	DATE 21.08.2024	DATE 21.08.2024	DATE 21.08.2024

SUITABILITY CODE S2	SUITABILITY DESCRIPTION FOR INFORMATION
------------------------	--

DRAWING No. 80192-NOD-01-XX-DR-C-08410	REVISION P01
---	-----------------