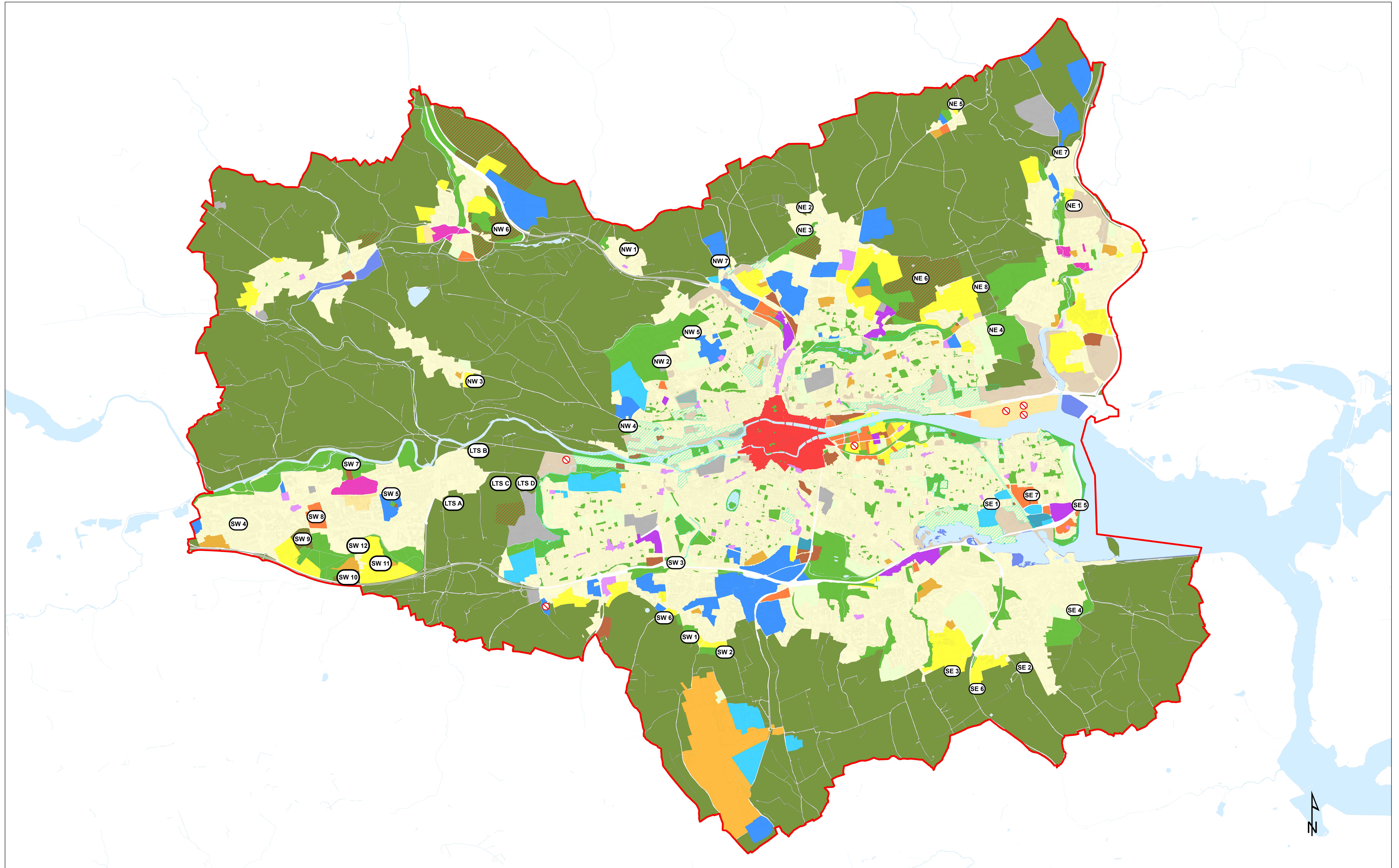


Composite Map - Proposed Variation #3

Base map © OSI; all rights reserved.



Cork City Zoning 2022

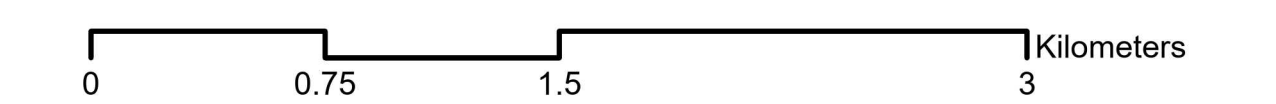
- ZO 01, Sustainable Residential Neighbourhoods
- ZO 02, New Residential Neighbourhoods
- ZO 03, Long-term Strategic Regeneration
- ZO 04, Mixed Use Development
- ZO 05, City Centre

- ZO 06, Urban Town Centre
- ZO 07, District Centre
- ZO 08, Neighbourhood and Local Centres
- ZO 09, Light Industry and Related Uses
- ZO 10, Business and Technology

- ZO 11, Retail Warehousing
- ZO 12, Education
- ZO 13, Institutions and Community
- ZO 14, Public Infrastructure and utilities
- ZO 15, Public Open Space

- ZO 16, Sports Grounds and Facilities
- ZO 17, Landscape Preservation Zones
- ZO 18, Quayside Amenity Area
- ZO 19, Rivers and Water Bodies Protection
- ZO 20, City Hinterland

- ZO 21, Cork Airport Infrastructure
- Long Term Strategic Development Lands
- Area of High Landscape Value
- City Boundary 2020
- SEVESO Site



Date Exported: 08/04/2026 15:26