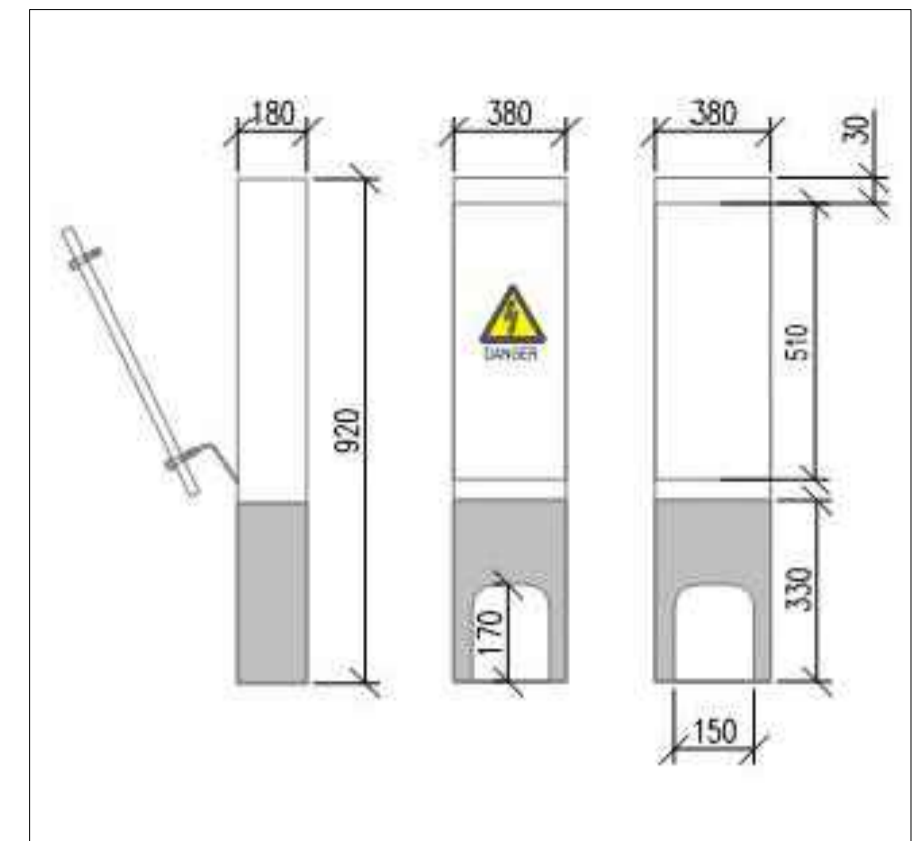
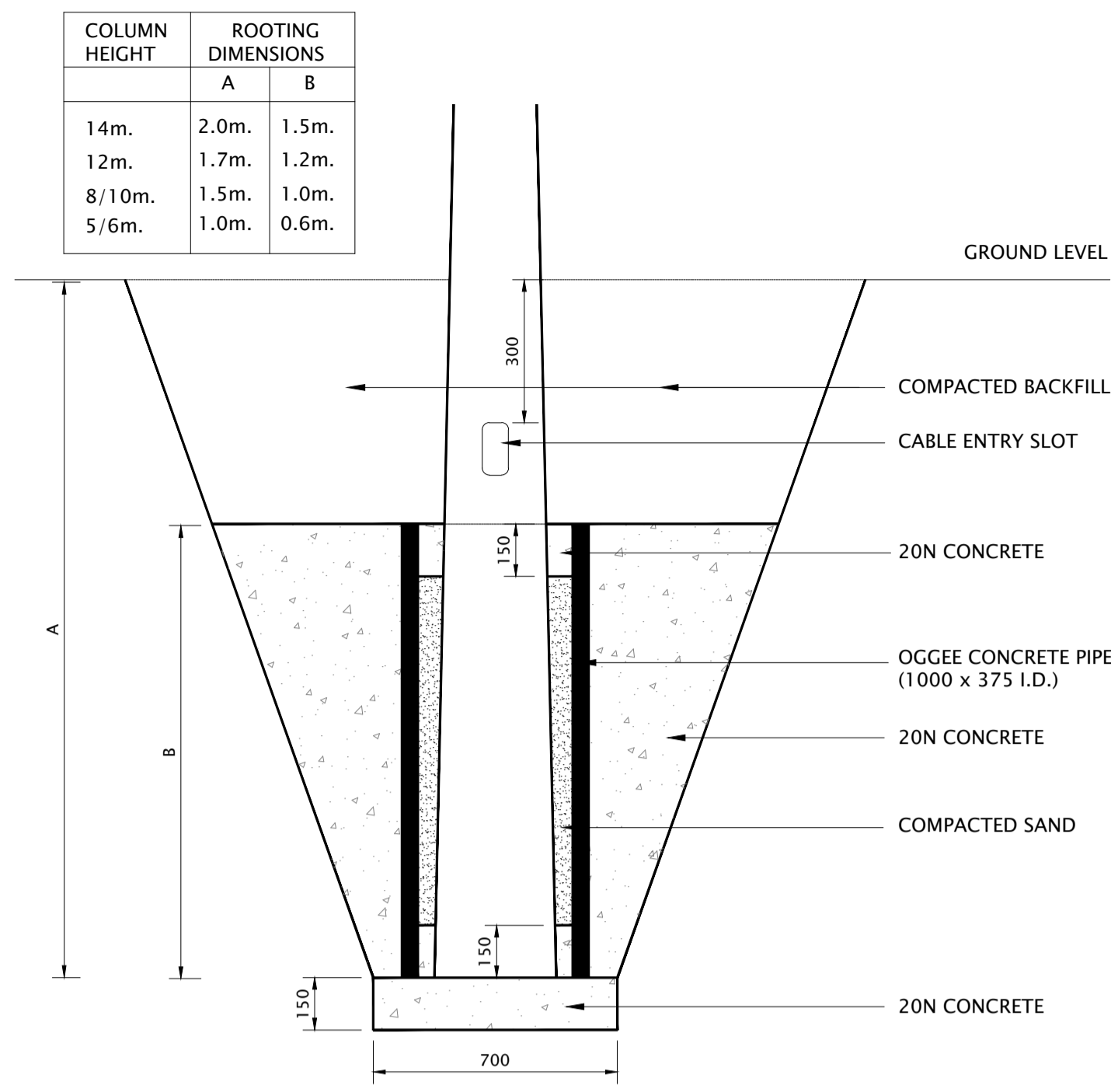


100  
10  
0  
Millimetres



- KEY NOTES:
1. THE PILLAR SHALL BE FITTED WITH LOCKABLE FULLY REMOVABLE DOOR.
  2. THE PILLAR SHALL BE GALVANISED INTERNALLY AND EXTERNALLY TO BS EN 1461.
  3. INCLUDE FOR EARTH LEAD CONNECTION SUPPLIED FROM PILLAR BODY TO DOOR.
  4. DANGER WARNING LABEL SHALL BE FITTED TO A DOOR.
  5. ALL OUTGOING LIGHT CIRCUITS SHALL BE INDIVIDUALLY FUSED, CAPABLE OF ACCOMMODATING CABLE SIZES UP TO 25mm<sup>2</sup>.
  6. THE FUSE SHALL BE RATED 16KA WITH MINIMUM RUPTURING CAPACITY AND SHALL COMPLY T BS 1361

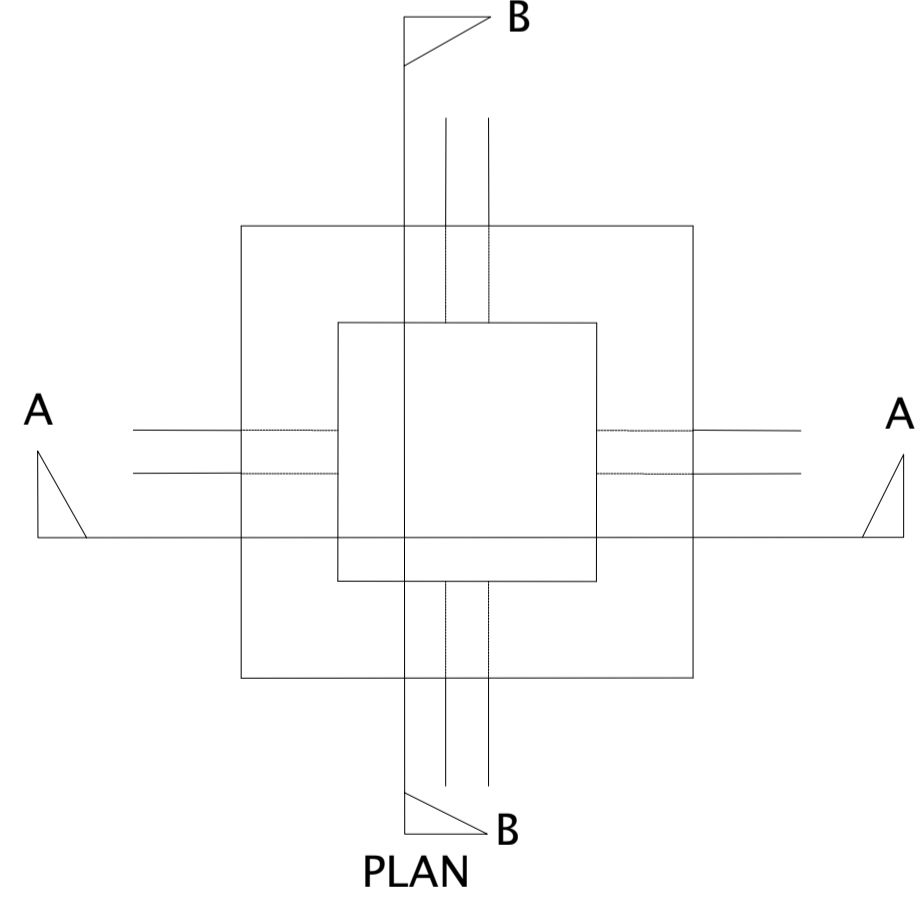
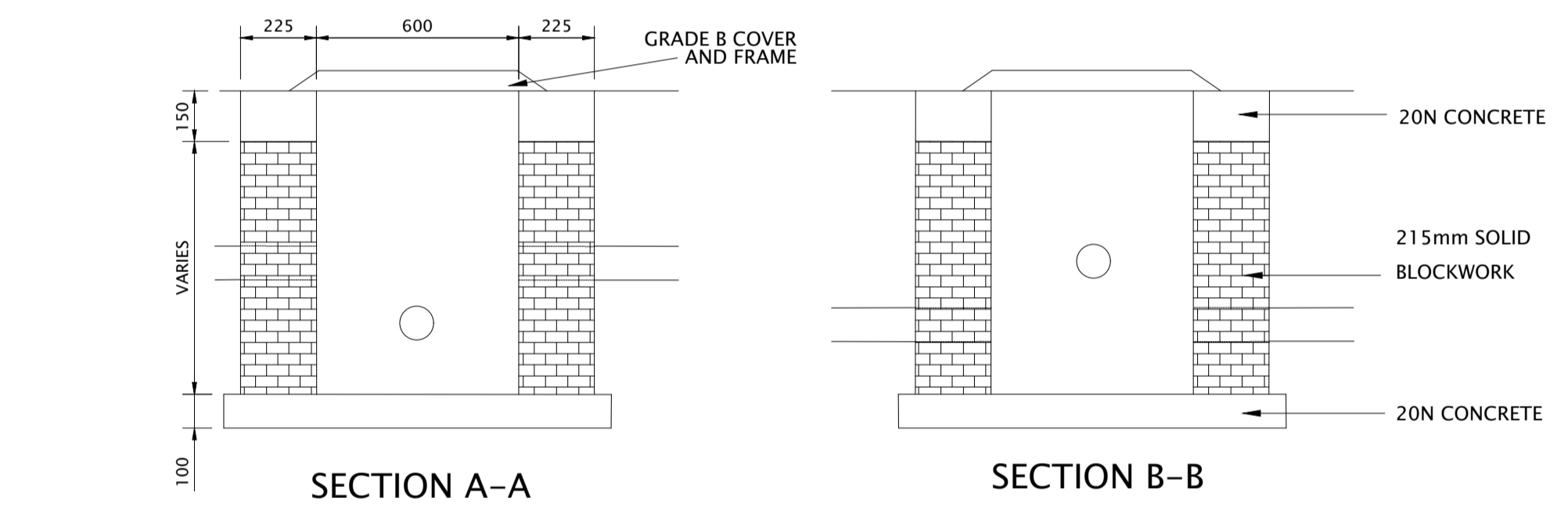
**SINGLE PHASED MICRO PILLAR FOR PUBLIG LIGHTINH**

SCALE : NTS

3  
961391

**1 PUBLIC LIGHTING COLUMN Sleeved Foundation**

SCALE : NTS



- NOTE:
- 1 DEPTH OF CHAMBER DETERMINED BY DUCT DEPTH. DUCT ENTRY TO CHAMBER TO BE 200mm min. ABOVE FLOOR.
  - 2 SEE SPECIFICATION FOR BACKFILLING AND REINSTATEMENT DETAILS.

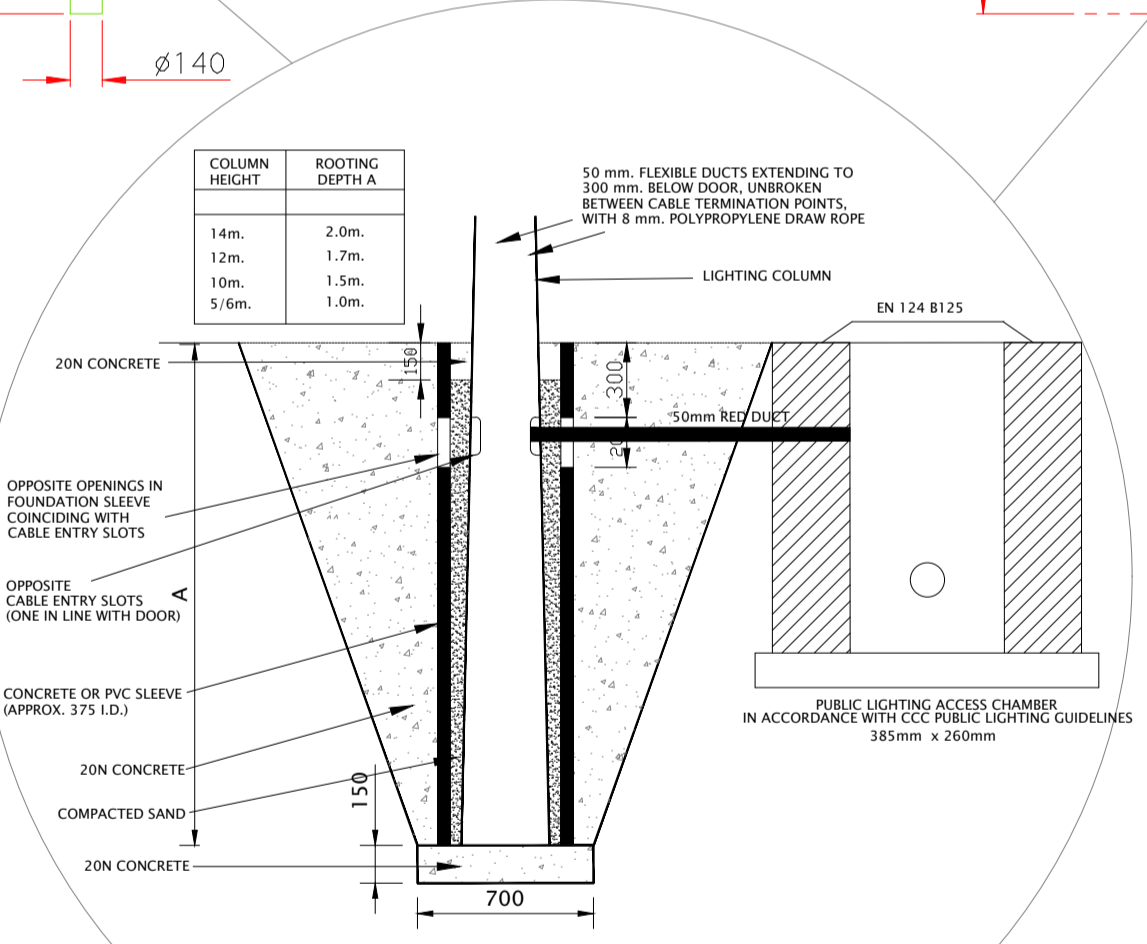
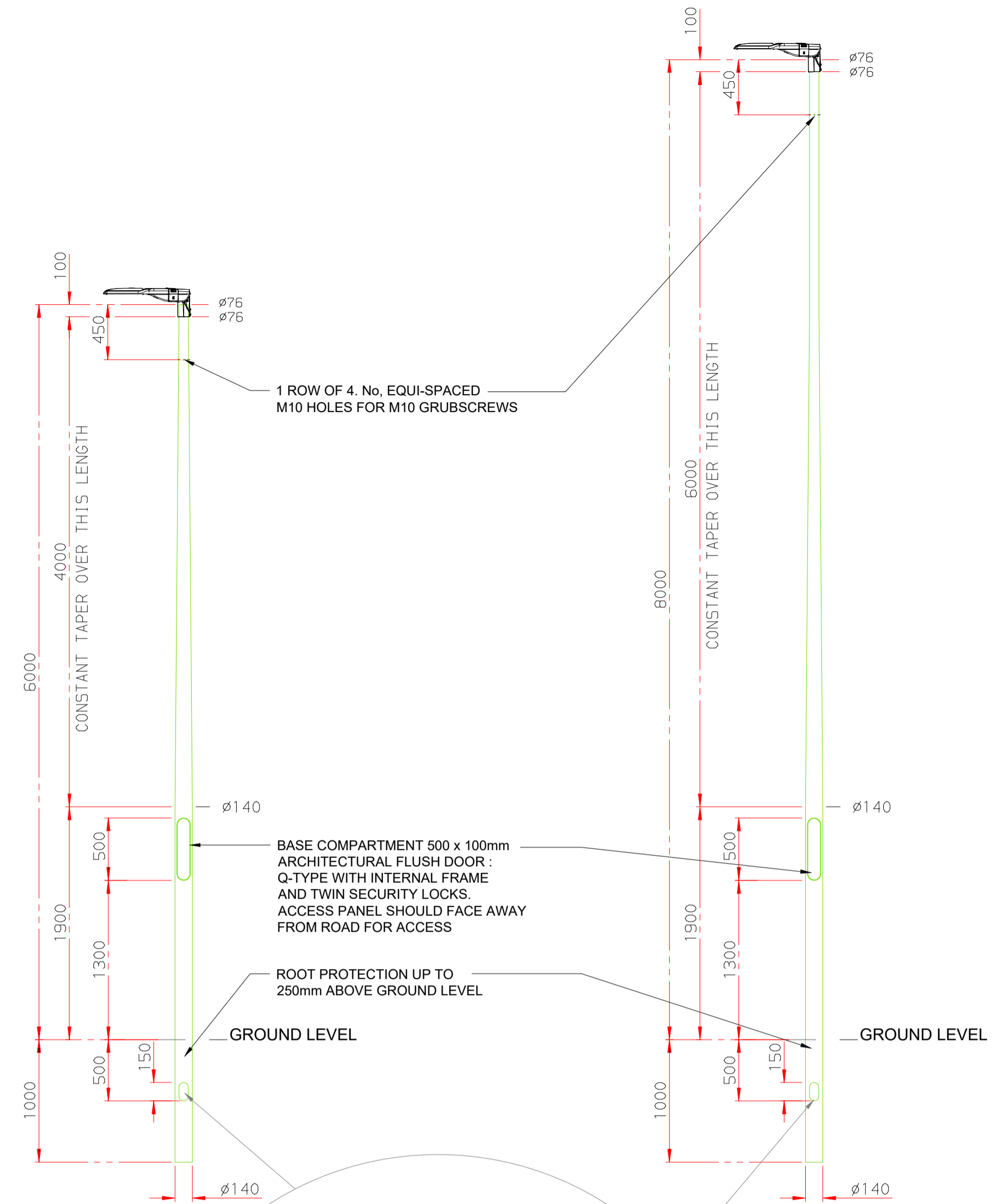
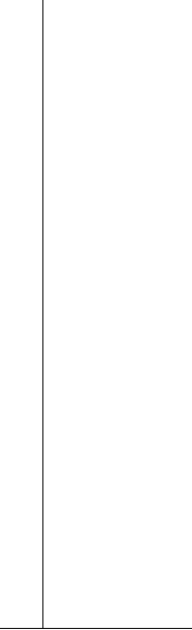
**2 CABLE ACCESS CHAMBER DETAILS**

SCALE : NTS

GENERAL NOTES

1. ALL DIMENSIONS ARE IN MILLIMETRES UNLESS NOTED OTHERWISE
2. ONLY WRITTEN DIMENSIONS SHALL BE USED. NO DIMENSIONS SHALL BE SCALED FROM THE DRAWINGS
3. ALL LEVELS ARE IN METRES AND ARE TO MALIN HEAD DATUM
4. ALL COORDINATES ARE IN METRES AND ARE TO IRISH TRANSVERSE MERCATOR
5. DRAWINGS ARE TO BE READ IN CONJUNCTION WITH THE SPECIFICATION

KEY PLAN



**4 TYPICAL GENERAL ARRANGMENTS OF 6M AND 8M POST CONICAL TAPERED TUBULAR LIGHTING COLUMNS**

SCALE : NTS

4  
961391

Rev.	Date	Description	By	Rev'd	Ch'd	App'd
C00	27.03.26	ISSUED FOR PLANNING	AJ	MB	GK	MOS

Drawing Status: **FOR PLANNING** Suitability: **A2**

**AtkinsRéalis**  
DUBLIN | CORK | GALWAY | DUNDALK  
ATKINS HOUSE, 150 AIRSIDE BUSINESS PARK, SWORDS, DUBLIN, K67 K5W4.  
Tel : +353 1 810 8000 Email : info.ie@atkinsrealis.com

Client: **CORK CITY COUNCIL**

Project Title		CNWQR - PHASE 3C			
Drawing Title		PHASE 3C PROPOSED PUBLIC LIGHTING DETAILS			
Scale	Drawn	Checked	Reviewed	Authorised	
NTS	AJ	GK	MB	MOS	
Original Size	Date	Date	Date	Date	
A1	27.03.26	27.03.26	27.03.26	27.03.26	
Drawing Number	Revision				
P3C-ZZZ-XXX-DR-ATK-EE-000002	C00				

P:\EQA\jobstore\0119710\05\_Dwg-Graphics\62\_P3C\61\_AutoCad\MAE\P3C-ZZZ-XXX-DR-ATK-EE-000002.dwg

Atkins Project Number: 100119710