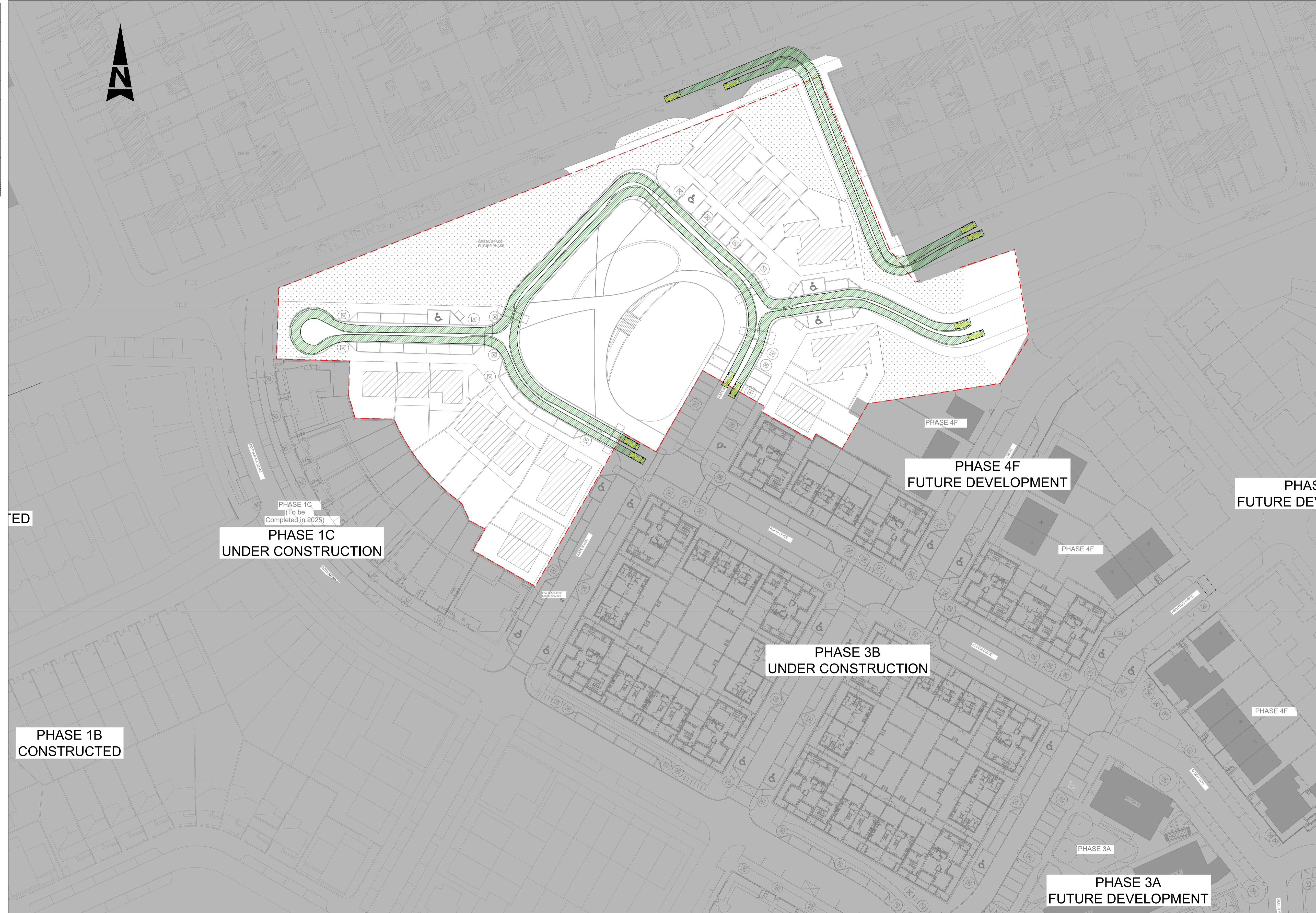


100
0 10
Millimetres

LEGEND:
----- PHASE BOUNDARY



PHASE 1C
(To be Completed in 2025)
PHASE 1C UNDER CONSTRUCTION

PHASE 4F FUTURE DEVELOPMENT

PHASE 4F FUTURE DEVELOPMENT

PHASE 3B UNDER CONSTRUCTION

PHASE 1B CONSTRUCTED

PHASE 3A FUTURE DEVELOPMENT

- GENERAL NOTES**
1. ALL DIMENSIONS ARE IN MILLIMETRES UNLESS NOTED OTHERWISE
 2. ONLY WRITTEN DIMENSIONS SHALL BE USED. NO DIMENSIONS SHALL BE SCALED FROM THE DRAWINGS
 3. ALL LEVELS ARE IN METRES AND ARE TO MALIN HEAD DATUM
 4. ALL COORDINATES ARE IN METRES AND ARE TO IRISH TRANSVERSE MERCATOR
 5. DRAWINGS ARE TO BE READ IN CONJUNCTION WITH THE SPECIFICATION

VEHICLE

Overall Length	4.223m
Overall Width	1.715m
Overall Body Height	1.392m
Min Body Ground Clearance	0.293m
Max Track Width	1.629m
Lock to lock time	4.00s
Kerb to Kerb Turning Radius	5.780m

Rev.	Date	Description	By	Rev'd	Ch'd	App'd
C01	08.04.26	ISSUED FOR PLANNING	AF	PP	MB	MOS
C00	27.03.26	ISSUED FOR PLANNING	AF	PP	MB	MOS

Drawing Status: **FOR PLANNING** Suitability: **A2**

AtkinsRéalis
DUBLIN | CORK | GALWAY | DUNDALK
ATKINS HOUSE, 150 AIRSIDE BUSINESS PARK, SWORDS, DUBLIN, K67 K5W4.
Tel : +353 1 810 8000 Email : info.ie@atkinsrealis.com

Client: **CORK CITY COUNCIL**

Project Title		CNWQR - PHASE 3C			
Drawing Title		PHASE 3C PROPOSED AUTOTRACKING LAYOUT PRIVATE CAR			
Scale	Drawn	Checked	Reviewed	Authorised	
1:500	AF	PP	MB	MOS	
Original Size	Date	Date	Date	Date	
A1	27.03.26	27.03.26	27.03.26	27.03.26	
Drawing Number	Revision				
P3C-ZZZ-ZZZ-DR-ATK-CE-950753	C01				

P:\EQA\Jobstore\10119710\G_Dwg-Graphics\62_P3C\61_AutoCad\P3C-ZZZ-ZZZ-DR-ATK-CE-950753.dwg

Atkins Project Number: 100119710