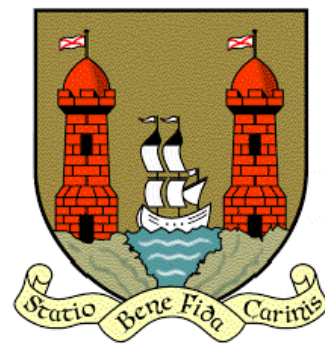


CORK CITY COUNCIL TRAFFIC OPERATIONS DIVISION

Proposed Road Safety Improvement Works on L2779 Road at Kerry Pike Village (Proposed Zebra Crossing)



Public Consultation Pursuant to
Section 38 of the Road Traffic Act 1994

Public Consultation Drawings

DRAWING SCHEDULE

DWG No.	TITLE
000	Drawing Schedule
001	Site Location Map
002	Proposed Layout & Details



CORK CITY COUNCIL
Traffic Operations Division

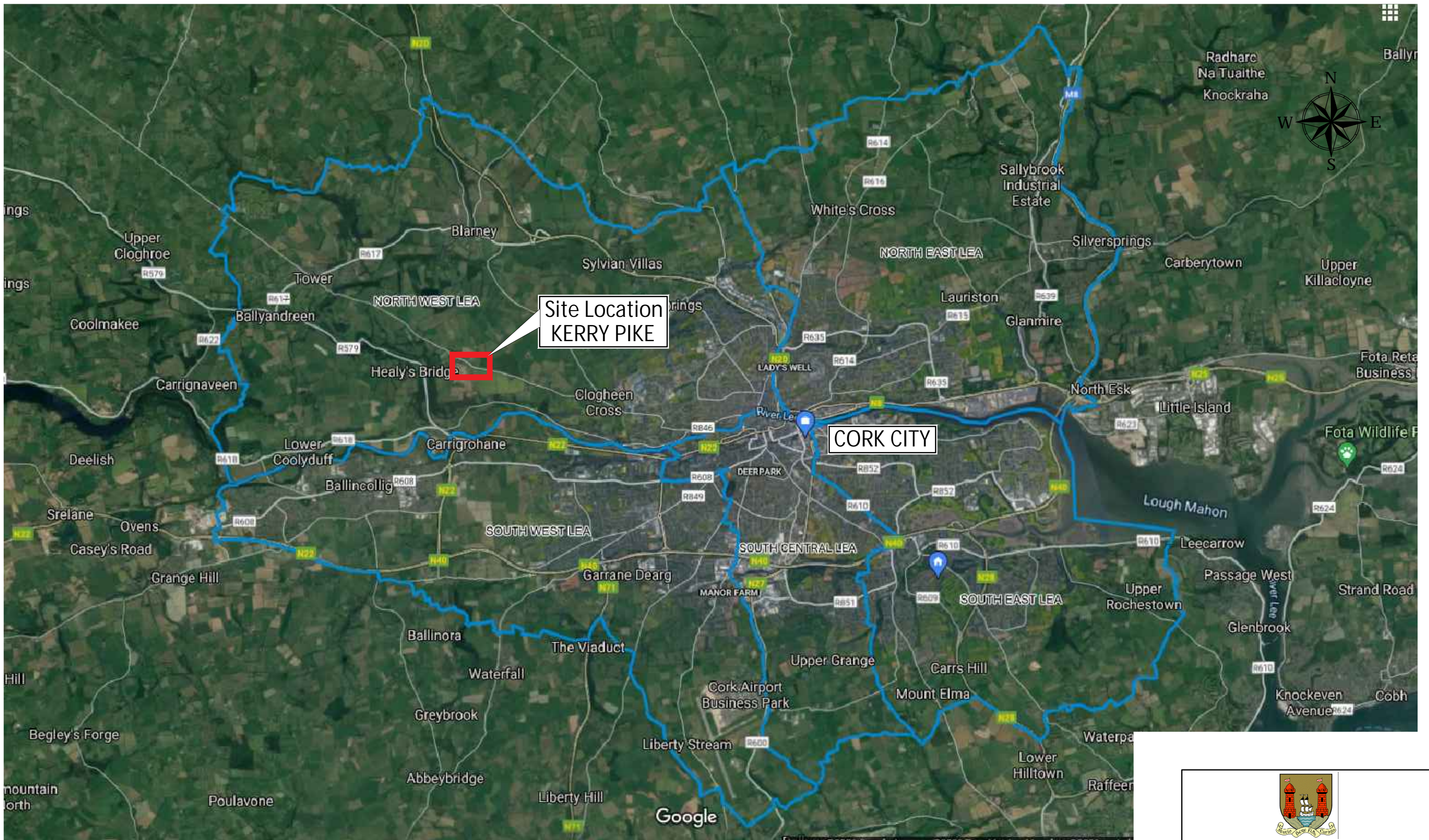
Project: Kerry Pike Zebra Crossing

Title: DRAWING SCHEDULE


Status: Consultation | Scale: N/A

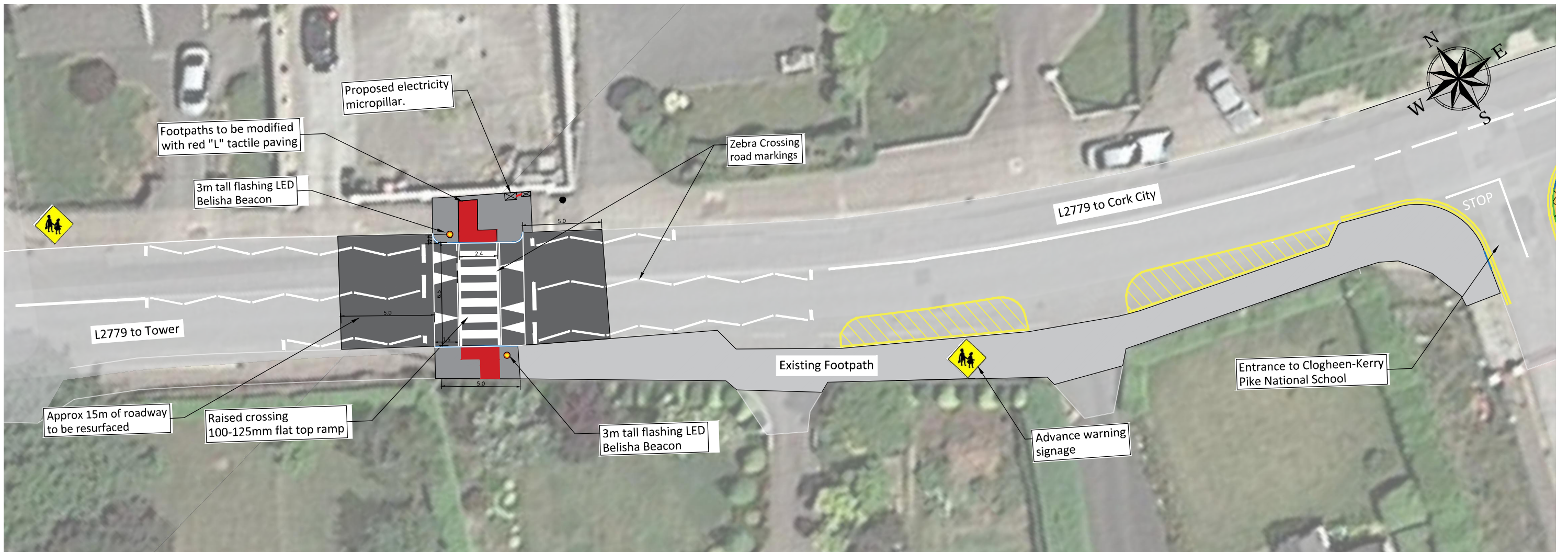
Drawn: J.L. | Checked: CB | Approved: EK

Date: 7/6/21 | DWG. No. 000 | Rev: P01



SITE LOCATION MAP
(not to scale)

		
CORK CITY COUNCIL Traffic Operations Division		
Project: Kerry Pike Zebra Crossing		
Title: SITE LOCATION MAP		
Status: Consultation	Scale: not to scale	
Drawn: J.L.	Checked: CB	Approved: EK
Date: 7/6/21	DWG. No. 001	Rev: P01



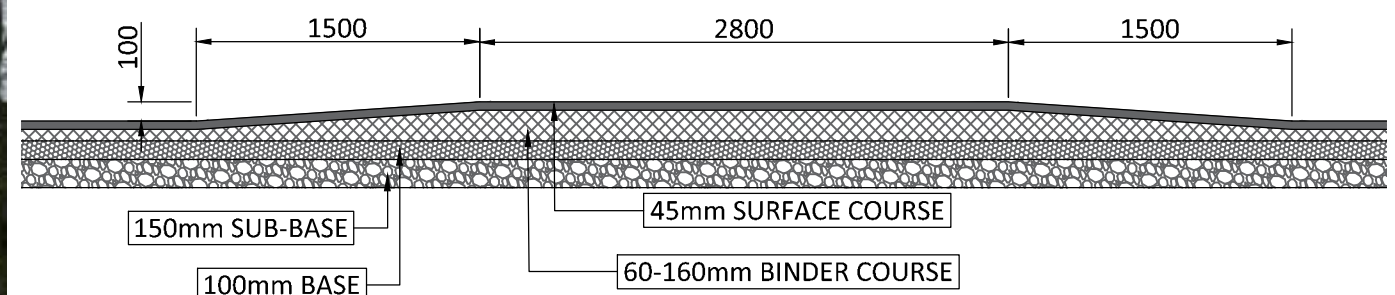
Proposed Road Layout Scale 1:250

Notes:

1. Existing uncontrolled pedestrian crossing to be upgraded to Zebra crossing.
2. Crossing surface will be a raised flat-top type ramp, with a height of 100mm level higher than the adjacent roadway.
3. 3m tall LED Belisha beacons will be installed at each side of crossing. Example shown right.
4. Directional LED globe and/or globe shroud will be used to prevent stray light pollution to adjacent properties.
5. Footpaths at both sides will be modified with new red tactile paving to facilitate visually impaired road users.
6. Roadway will be resurfaced in the vicinity of the new crossing.
7. Minor alterations to the road drainage facilities will be undertaken to facilitate the crossing.
8. Advance warning signage to be installed at suitable locations 40-50m either side of proposed crossing.



Typical LED Belisha Beacon with Shroud



Flat Top Ramp Cross Section

Scale 1:40



CORK CITY COUNCIL
Traffic Operations Division

Project: Kerry Pike Zebra Crossing

Title: PROPOSED LAYOUT & DETAILS

Status: Consultation Scale: As shown

Drawn: J.L. Checked: CB Approved: EK

Date: 7/6/21 DWG. No. 002 Rev: P01