



Bishop Lucey Park
Tree Strategy Document

13.07.2021

Rev
PL01 13/07/21 Part 8 Submission

HALL McKNIGHT





CONTENTS

| SECTION | PAGE NO |
|--------------------|---------|
| 1.0 Overview | |
| 1.1 Introduction | 4 |
| 1.2 Tree Strategy | 5 |
| 1.3 Existing trees | 6 |
| 2.0 Proposals | |
| 2.1 Tree removal | 9 |
| 2.2 Tree addition | 10 |
| 3.0 Appendix | |
| Tree Survey Plan | |

1.0 OVERVIEW

1.1 INTRODUCTION

Introduction

The existing trees which populate Bishop Lucey Park are defining of its character, communicating its place as an important green block within the urban grain of the city. However, the distribution and density of tree covering within certain areas of the park is having a detrimental impact on the life of the park. They are blocking light and screening views, creating at certain times of the year a dark and uninviting experience. Also many of the trees are suffering from disease/poor health and have a limited life span as a consequence.

Purpose of this document

Hall McKnight and Brady Shipman Martin have prepared this document as a way of summarising our proposals for the retention, removal and addition of trees within Bishop Lucey Park. We've described how an analysis of the tree survey - alongside the requirements of the brief and design intent - necessitates an adjustment to the current provision of trees within the park. Please refer to Brady Shipman Martin's (BSM) accompanying report, proposed plan and tree survey drawings for further information.

Notes on the commentary

Throughout the document we'll discuss the variety of existing trees within the park. We'll also distinguish the birch groves as collective groups, rather than as individual trees, as distinct from the more individual species of trees which predominate throughout the park.



View from the centre of the park looking eastwards towards Grand Parade

1.0 OVERVIEW

1.2 TREE STRATEGY

Introduction

Whilst we've avoided the removal of existing trees where possible, there are a number of instances where this is required as part of our proposals. We have described below a number of reasons which have contributed to the decision making process.

1. Health of trees

- Brady Shipman Martin commissioned, supervised and provided comment on a tree survey undertaken recently within Bishop Lucey Park.
- The outcome of this tree survey, and subsequent advice provided by Brady Shipman Martin, allowed an assessment of the health of the trees, and a clear methodology for those that require removal.
- This tree survey is contained within an appendix to this document, with further information contained with BSM's accompanying reports and drawings.

2. Daylighting levels

- Our proposals seek to increase the daylighting levels in the park through all times of the year. Given the density of tree canopy/foilage, some areas of the park are dark and uninviting at certain times of the day/year.
- By strategically removing and thinning trees, we hope to create a lighter, brighter, more inviting atmosphere, encouraging footfall, occupation and reinvigorating this space at the heart of city life.

3. Views

- In order to activate the park and encourage its occupation, clear sightlines and views are very important. The distribution of trees within the park is currently detrimental to this in a number of locations.
- Most critically, views into the park from Grand Parade and South Main Street. However, also in the blocking of views to the heritage assets which provide interest and delight to the park, such as the southern elevation of the Triskel Arts Centre.

4. Conflict with proposed hardscaping

- The outline of the plinth edge has been adjusted to allow the retention of a number of trees around the edge of the plinth. The perimeter of the plinth responds to the position of Root Protection Area's identified

on the tree survey.

- Two significant trees at the east and west of the park have been retained on the plinth. In order to allow these trees to remain and provide a focus at either end of the park, we have raised the level of the plinth to allow their roots to remain undisturbed, whilst also accommodating a new finish to the surface.

5. Flexibility of use

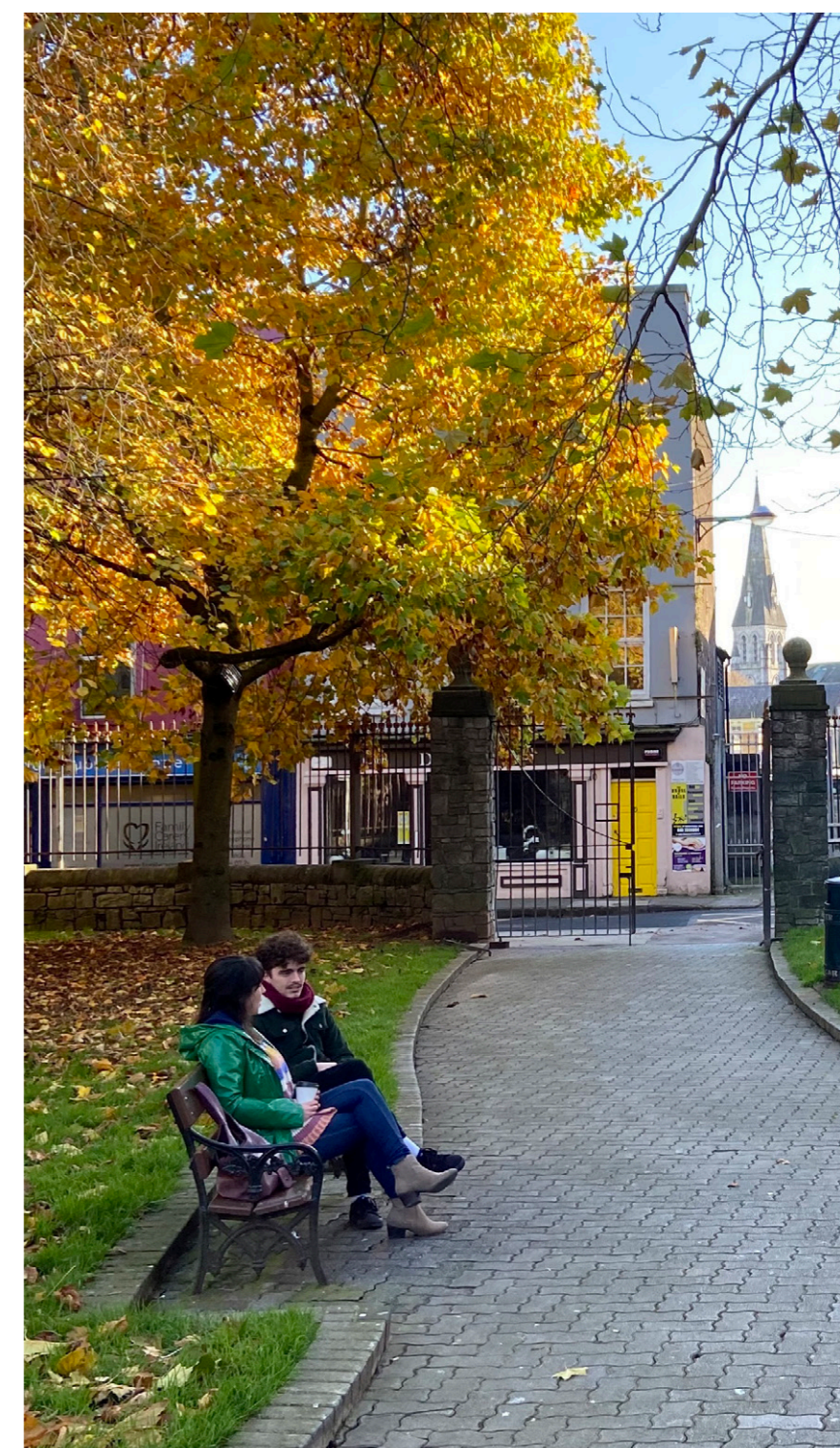
- There are a cluster of trees in the centre of the site that block views through the park, but also prevent the space acting as an adaptable and traversable piece of public realm.
- There are also a number of other trees which would restrict the flexibility/adaptability of the spaces that we are proposing for the park.

6. Patterns of movement

- Given the intensification of occupation in the immediate vicinity to the park (Events Arena, student housing, new bridge for example), the patterns of movement that have characterised Bishop Lucey Park are changing.
- We've analysed the likely desire lines through the park, coupled with the anticipated increased pedestrian footfall (especially from the Event Arena), and this has informed our strategy for retention or removal of existing trees, alongside the other factors listed here.

7. Protection of retained trees

- The root protection areas (RPAs) of all retained trees will be protected during construction in accordance with BS 5837:2012, Trees in relation to design, demolition and construction.
- Works required within the RPA of trees will be monitored by a qualified arboriculturist, and construction methodologies will utilise ground protection construction techniques (e.g. cellular confinement systems, arborraft) and 'no-dig' principles to protect the roots of retained trees.
- Any essential excavations will be carried out by hand digging or specialised compressed air tools to avoid damage to tree roots.



View looking southwards towards the Tuckey Street entrance

1.0 OVERVIEW

1.3 EXISTING TREES



View 1



View 2



View 3



Key Plan

1.0 OVERVIEW

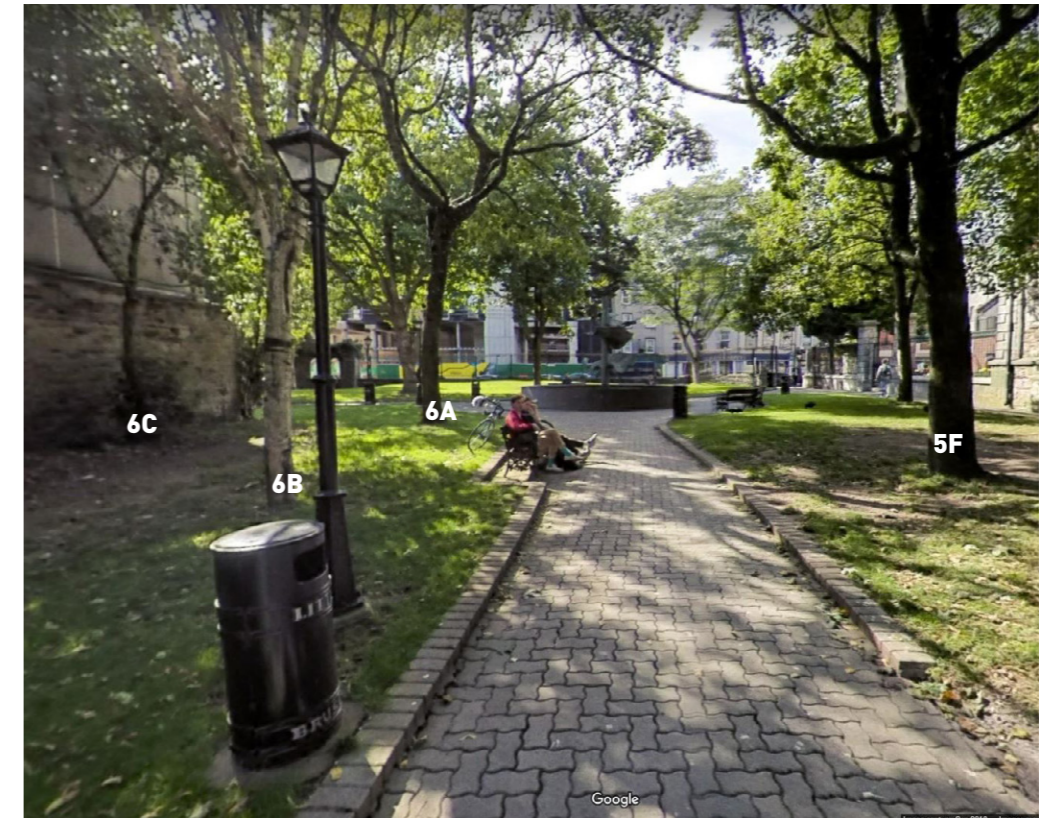
1.3 EXISTING TREES



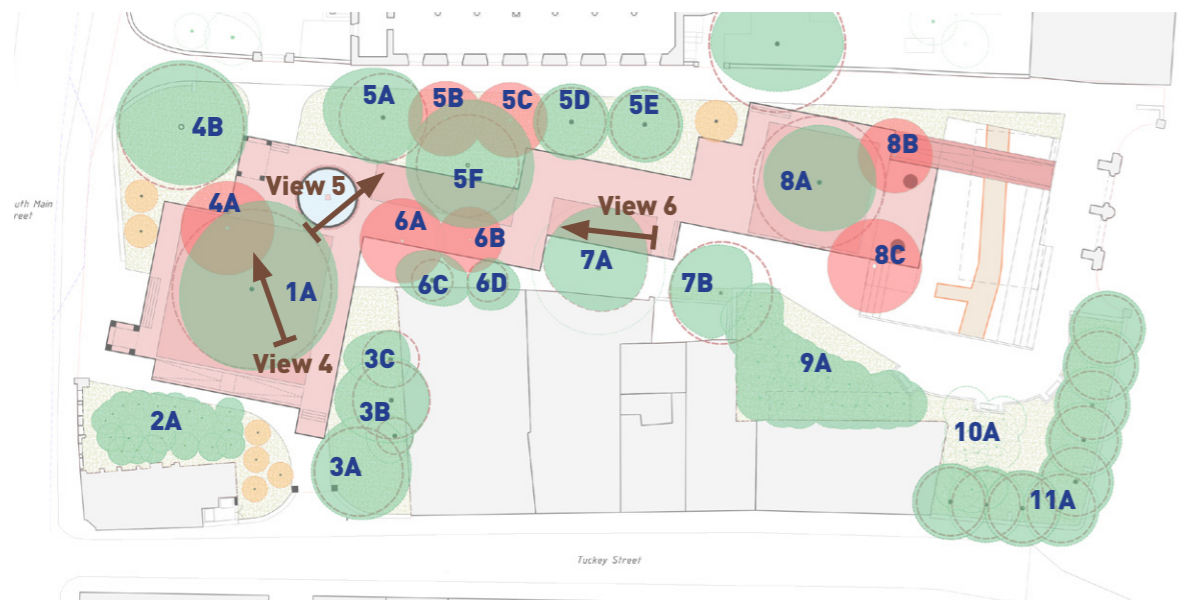
View 4



View 5



View 6



Key Plan

1.0 OVERVIEW

1.3 EXISTING TREES



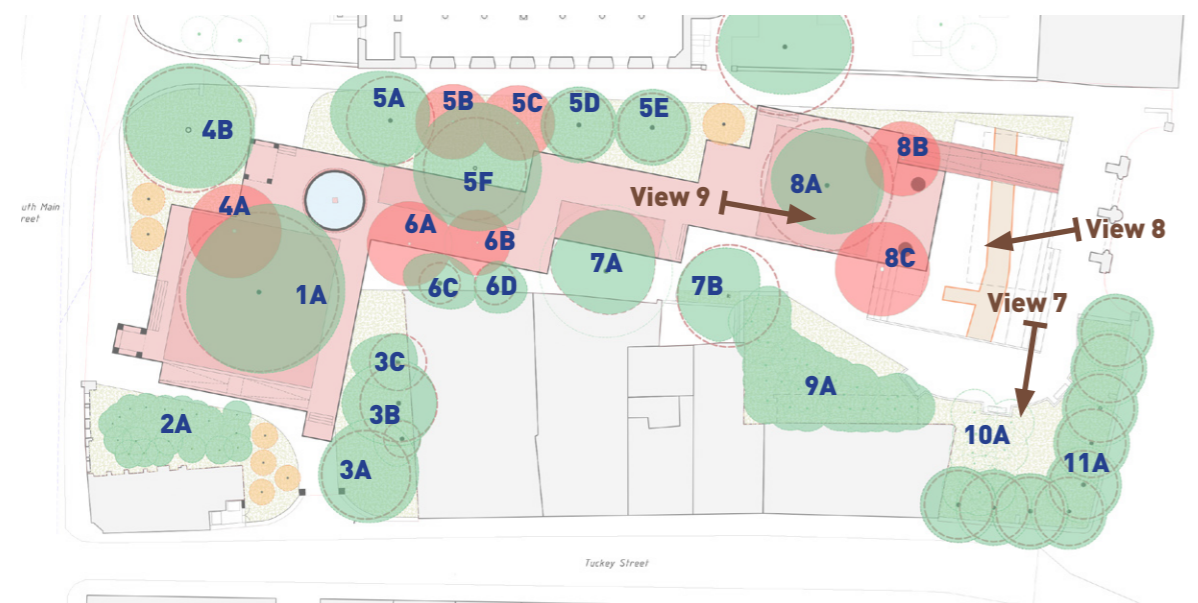
View 7



View 8



View 9



Key Plan