

HOUSE TYPE B2

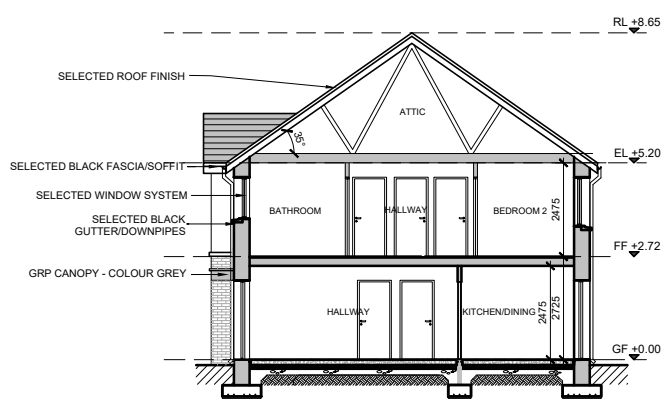
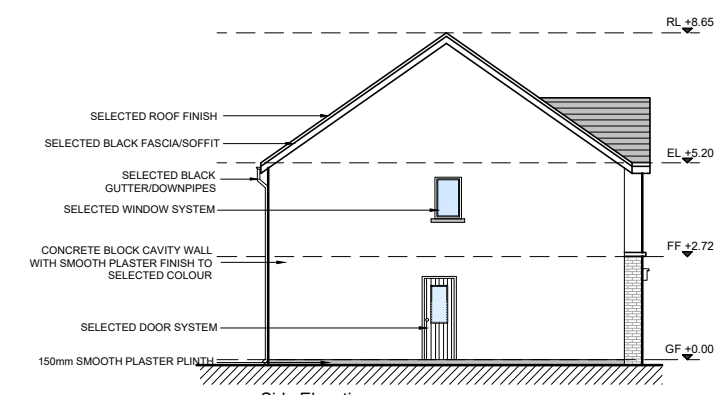
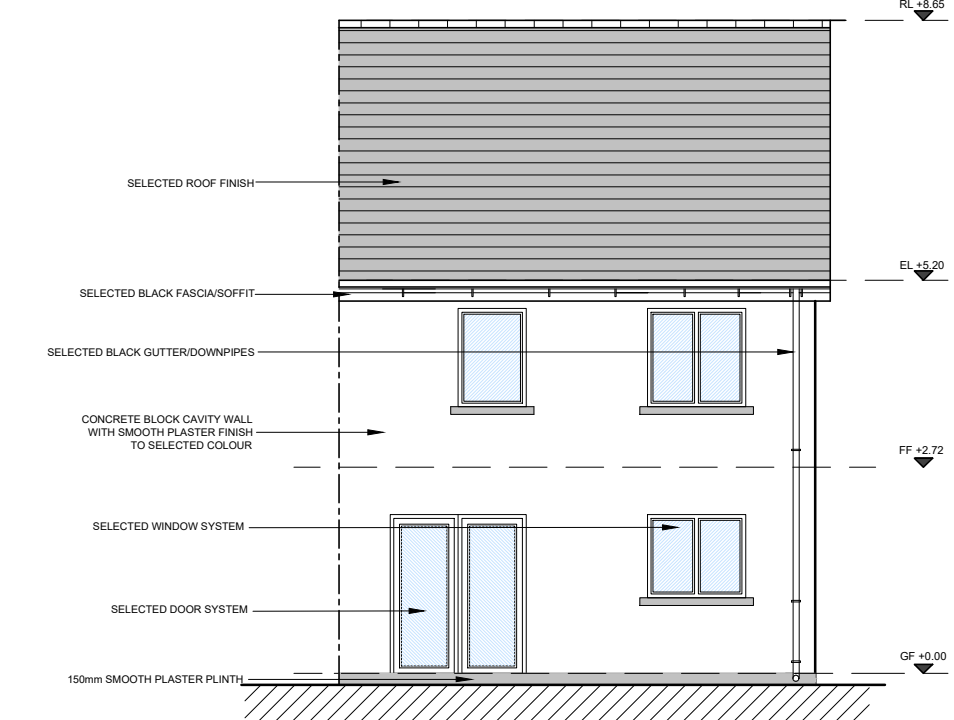
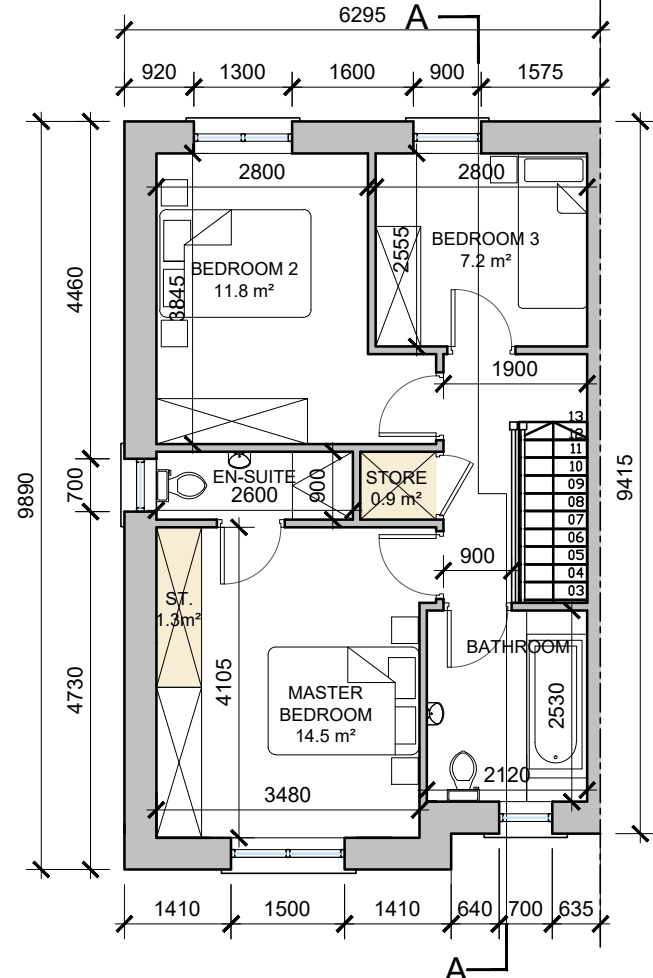
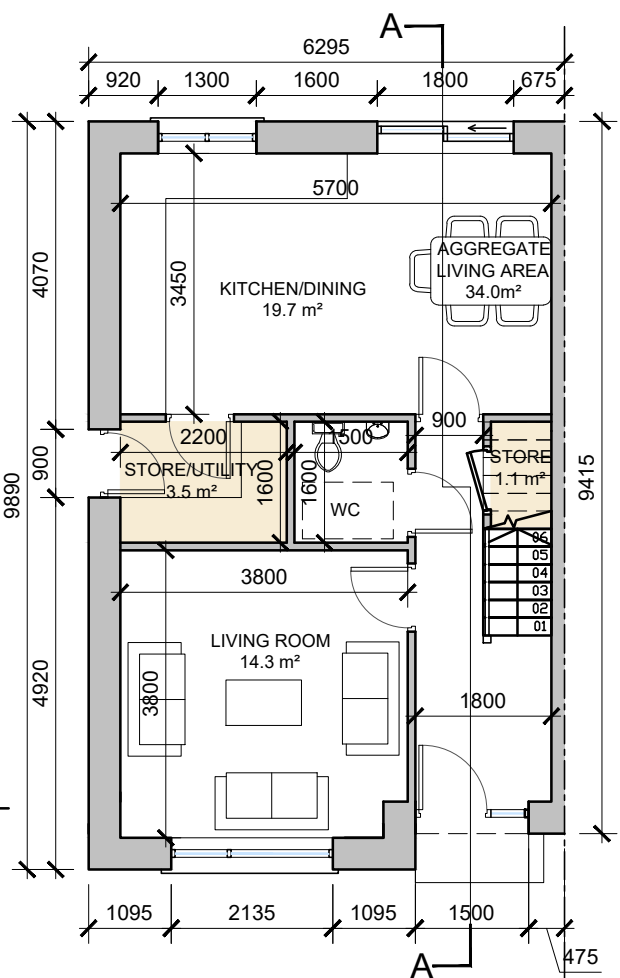
3-bed Semi-Detached (5 person)

AREA: 101.0 SQ.M.

1,087 SQ.FT.

STORAGE total - 6.8 sq.m.

DO NOT SCALE. WORK TO FIGURED DIMENSIONS ONLY.
ALL EXISTING DIMENSIONS TO BE CHECKED ON SITE.
DRAWN ON AUTOCAD R2004 AT DEADY GAHAN ARCHITECTS LTD
LAYERS ON THIS DRAWING COMPLY WITH BS 1192: PART 5



NOTE: POSITION OF NORTH POINT & LEVELS VARY.
SEE SITE PLAN FOR ORIENTATION - DWG NO. 20185/P/003A

date	rev	name	chk	note
16.06.22	P1	COC	EJK	ISSUED FOR INFORMATION/COMMENT

DEADY GAHAN ARCHITECTS

EASTGATE VILLAGE, LITTLE ISLAND CORK
T: 021 4335016 WWW.DGARCHITECTS.IE
EMAIL: INFO@DGARCHITECTS.IE

Project
PROPOSED RESIDENTIAL DEVELOPMENT
AT LEHENAGHMORE, CO. CORK

Drawing title			
HOUSE TYPE B2- 3-BED SEMI DETACHED/END TOWNHOUSE PLANS, ELEVATIONS, SECTION A-A AND 3D RENDER			
Scale 1:100/200 @ A3	Drawn KM	Checked EJK	Date 23.11.21
Project No. 20185	Dwg. No. 20185/P/121	Revision ---	Tender Construction