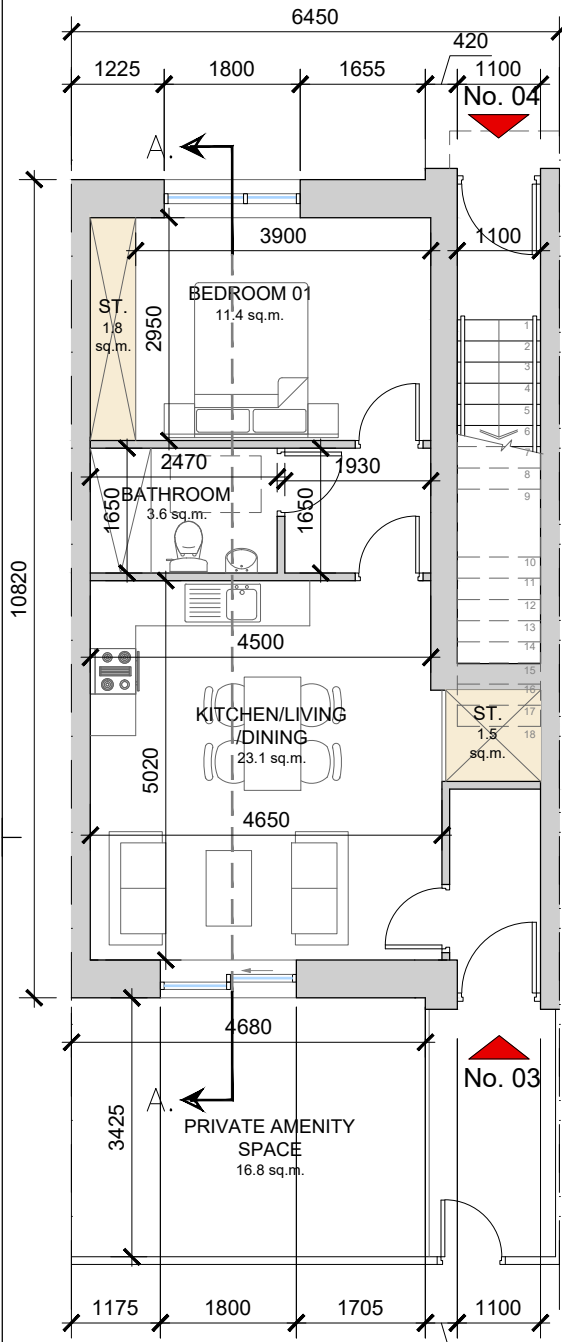


**UNIT TYPE C1**

1-bed Ground Floor Apartment (2 person)

**AREA: 49.4 SQ.M.**  
**532 SQ.FT.**  
 STORAGE total - 3.3 sq.m.



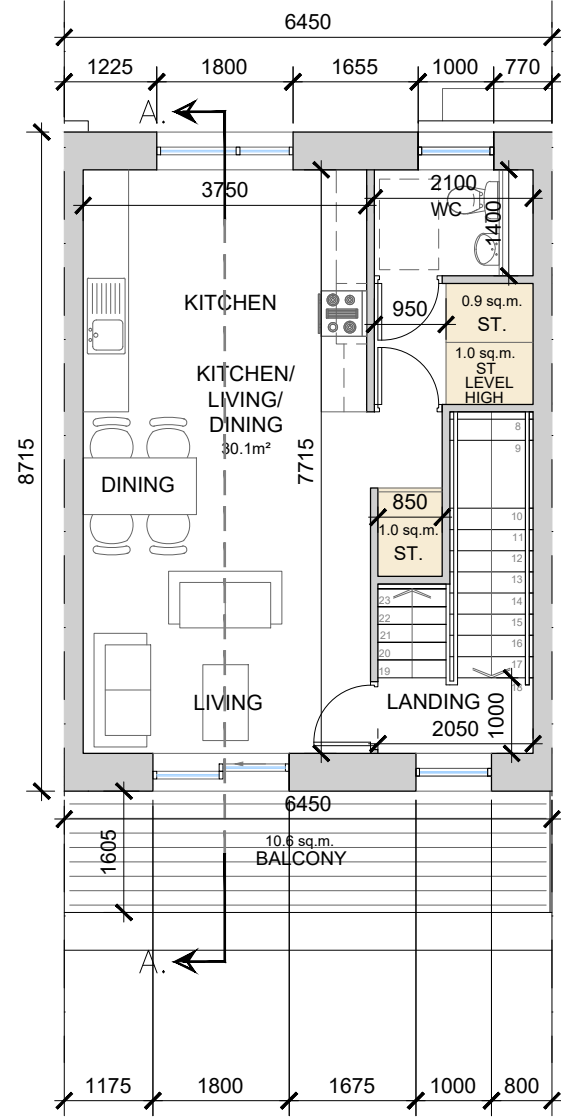
**UNIT C1/D1- Ground Floor Plan**  
 SCALE 1:100 @ A3

**UNIT TYPE D1**

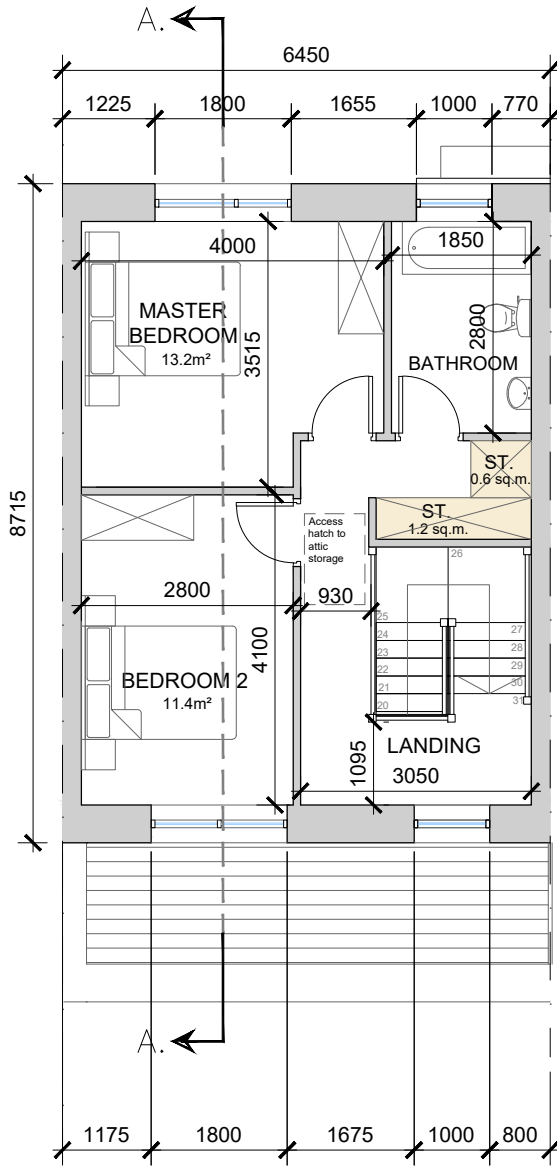
2-bed Duplex Apartment (4 person)

**AREA: 87.9 SQ.M.**  
**946 SQ.FT.**  
 STORAGE total - 6.0 sq.m.

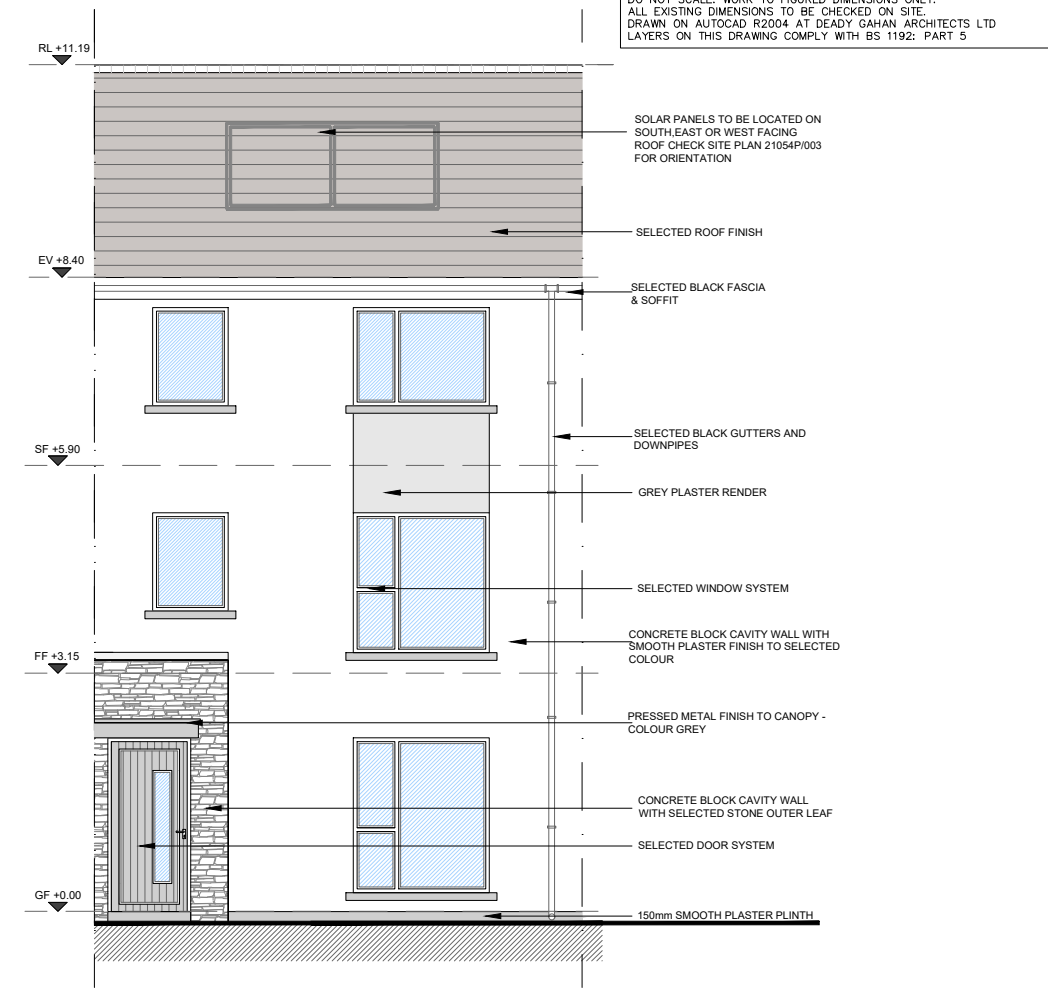
(with access staircase and ground floor entrance = 95.3 SQ.M.)



**UNIT C1/D1- First Floor Plan**  
 SCALE 1:100 @ A3



**UNIT C1/D1 Second Floor Plan**  
 SCALE 1:100 @ A3



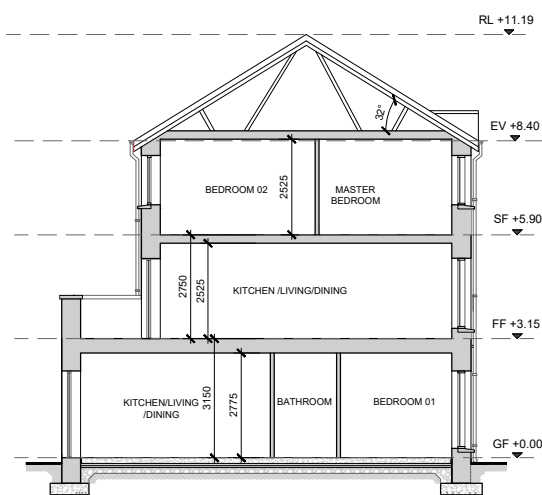
**Front Elevation**  
 SCALE 1:100 @ A3



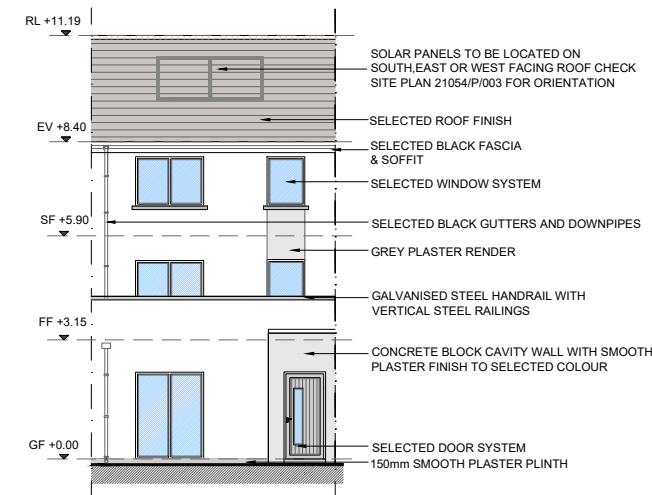
**3D Render - Rear**  
 SCALE: NTS



**3D Render - Front**  
 SCALE: NTS



**Section A-A**  
 SCALE 1:200 @ A3

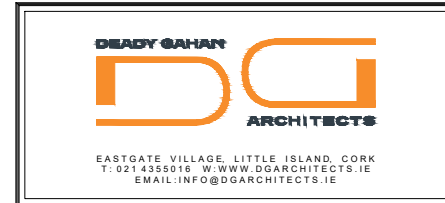


**Rear Elevation**  
 SCALE 1:200 @ A3

DO NOT SCALE. WORK TO FIGURED DIMENSIONS ONLY. ALL EXISTING DIMENSIONS TO BE CHECKED ON SITE. DRAWN ON AUTOCAD R2004 AT DEADY GAHAN ARCHITECTS LTD. LAYERS ON THIS DRAWING COMPLY WITH BS 1192: PART 5.

NOTE: POSITION OF NORTH POINT & LEVELS VARY. SEE SITE PLAN FOR ORIENTATION - DWG NO. 21054/P/003

date	rev	name	chk	note
14.06.22	P1	MP	EJG	ISSUE FOR PLANNING



Project  
 PROPOSED RESIDENTIAL DEVELOPMENT  
 IN DUBLIN PIKE, BALLINCROKIG, CO CORK

Drawing title DUPLEX UNIT C1 & D1 PLANS, ELEVATIONS, SECTION A-A & 3D RENDER			
Scale 1:100 / 200 @ A3	Drawn KM	Checked EJG	Date 16.12.21
Project No. 21054	Drw. No. 21054/P/201	Revision P1	
Information / Comments		Tender	
Planning		Construction	

**HOUSE TYPE C1/D1**  
 SCALE: 1:100/ 200 @ A3