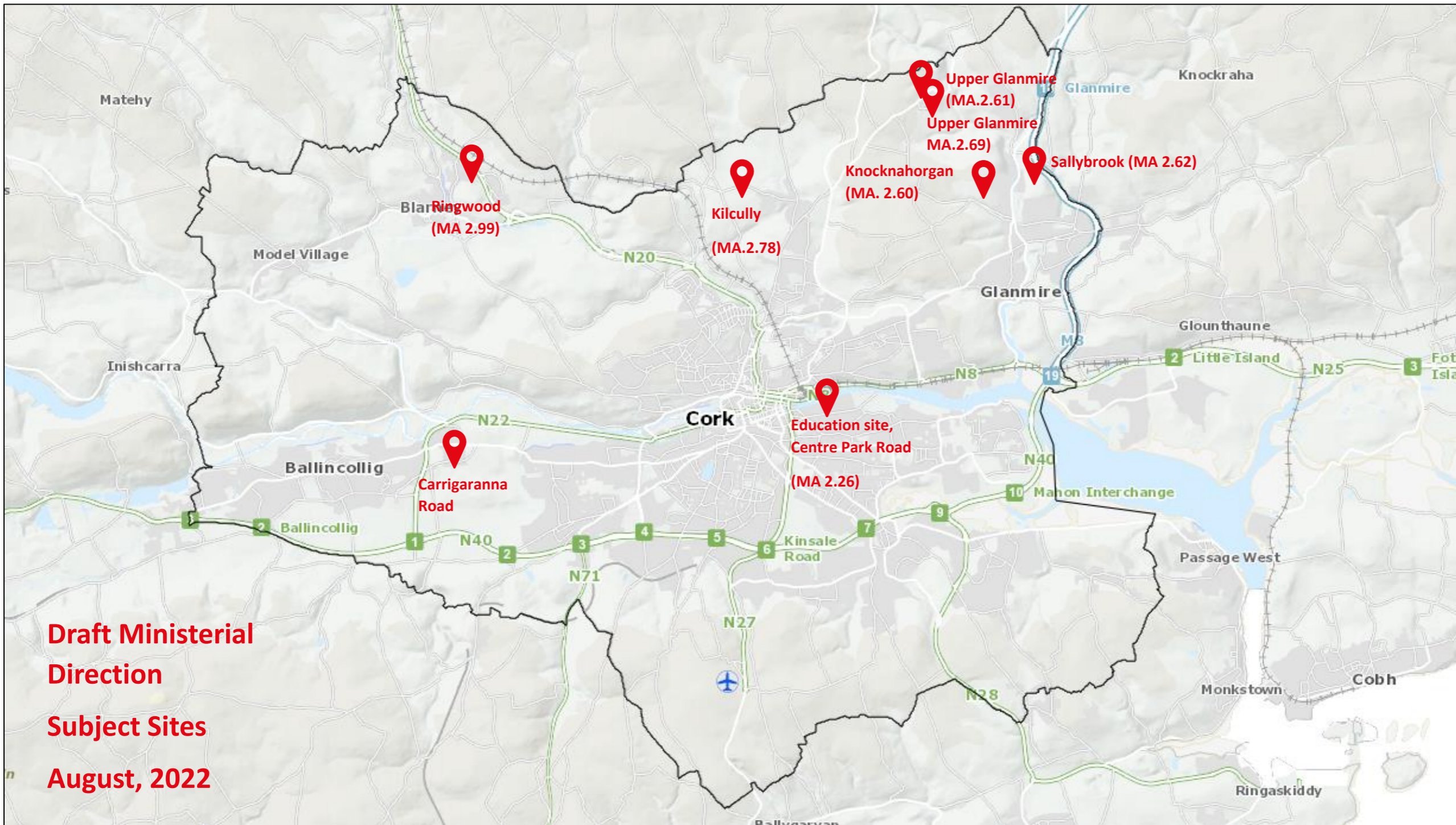
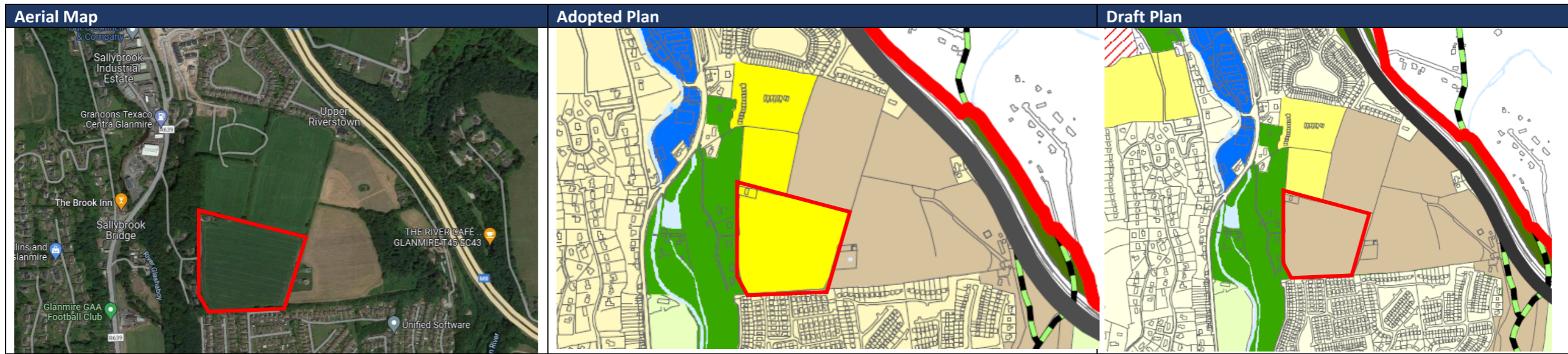


Particulars of the Draft Direction to reinstate the following zoning objectives to that of the Draft Plan



B(i) MA 2.62 ZO 2 New Residential Neighbourhood (Adopted Plan) reverts to ZO 18 Landscape Preservation Zones (Draft Plan)
(Sallybrook, Glanmire – Map 19)



B(ii) MA 2.60 ZO 2 New Residential Neighbourhoods (Adopted Plan) reverts to ZO 21 City Hinterland (Draft Plan).
(Knocknahorgan, Glanmire – Map 19)

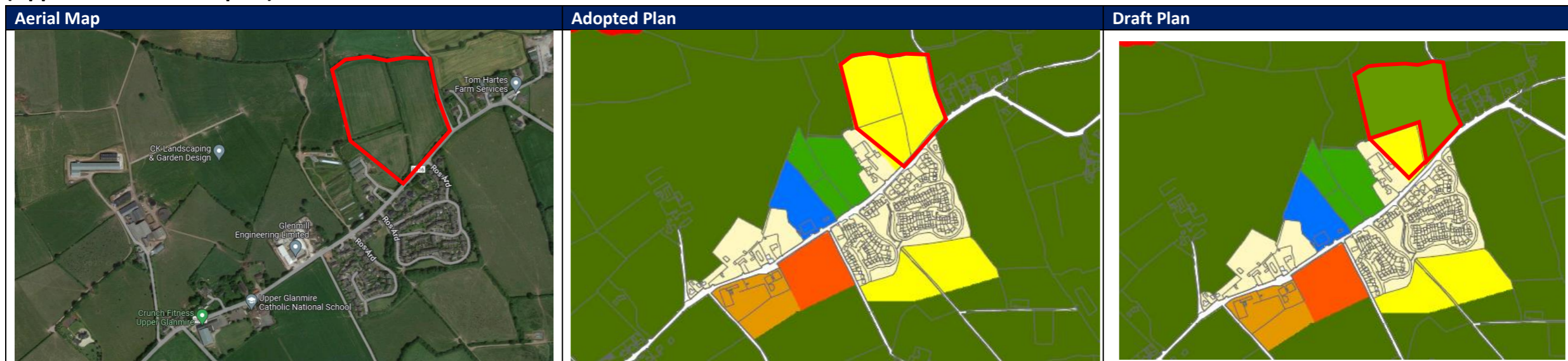


B(iii) MA 2.78 ZO 2 New Residential Neighbourhood (Adopted Plan) reverts to ZO 21 City Hinterland (Draft Plan)
(Kilcully – Map 12)

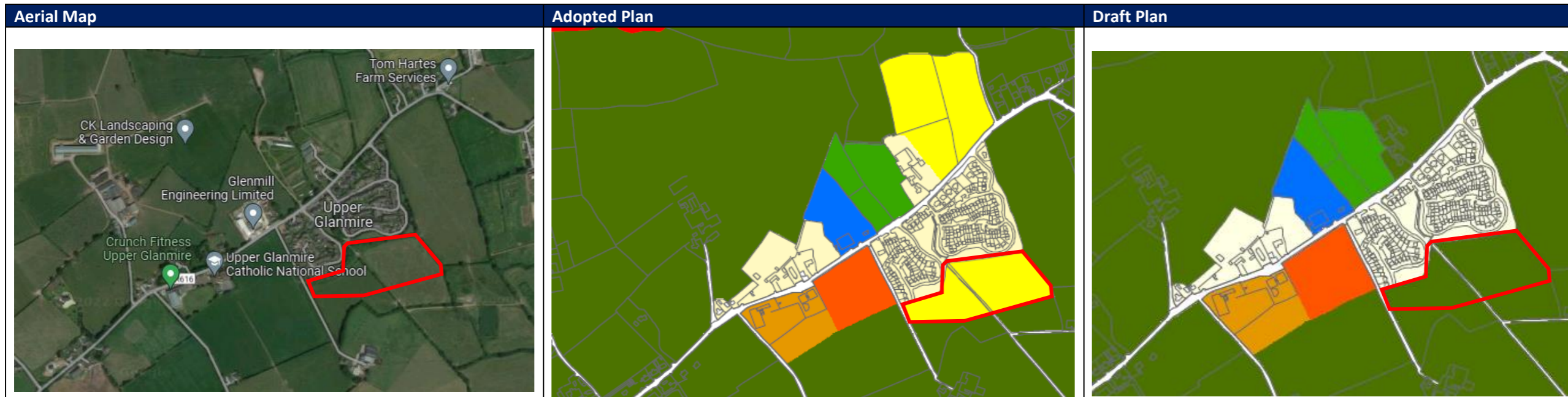


B(iv) MA 2.61 ZO 2 New Residential Neighbourhoods (Adopted Plan) except in respect of the lands to be developed for housing under Cork City Council planning reference 2140600 reverts to ZO 21 City Hinterland (Draft Plan).

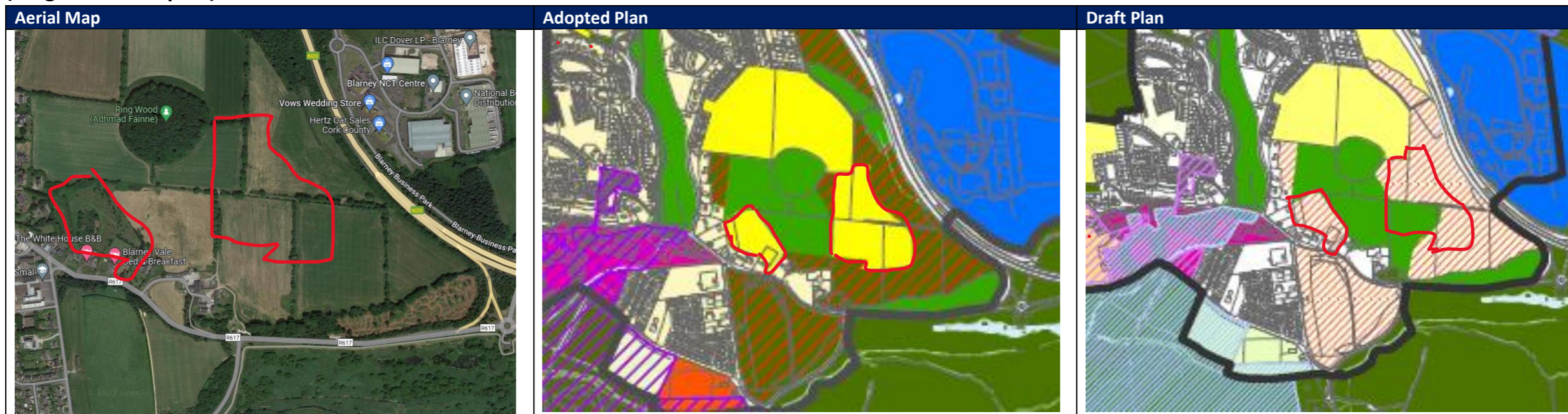
(Upper Glanmire – Map 13)



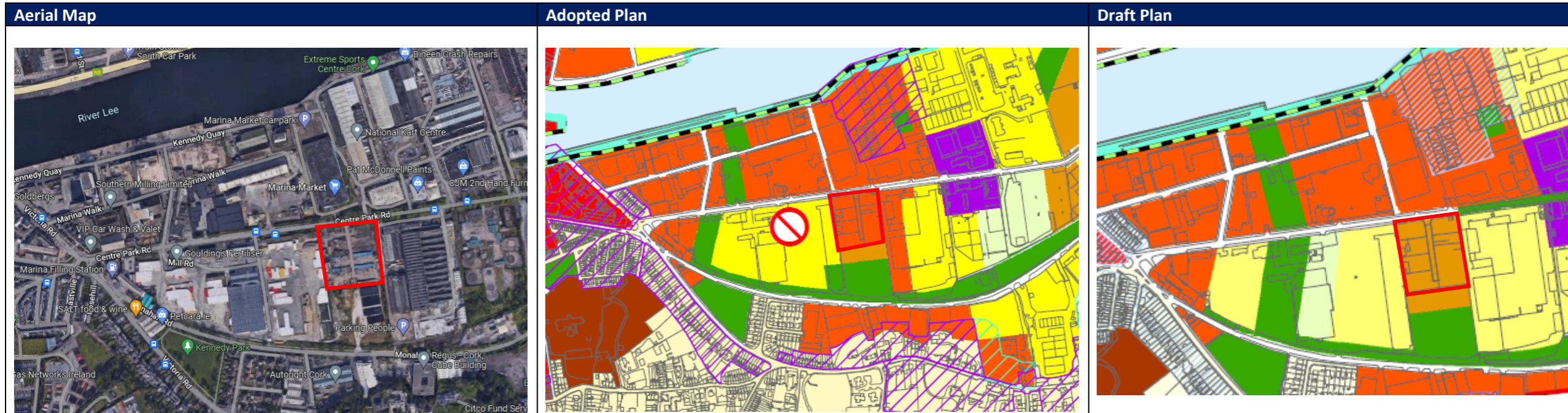
B(v) MA 2.69 ZO 2 New Residential Neighbourhood (Adopted Plan) reverts to ZO 21 City Hinterland (Draft Plan)
(Upper Glanmire – Map 13)



B(vi) MA 2.99 the remaining residential land reverts from ZO 2 New Residential Neighbourhoods to ZO 21 City Hinterland & Longer Term Strategic Development Lands.
(Ringwood – Map 11)



B(vii) MA 2.26 Z0 5 Mixed Use Development (Adopted Plan) reverts to Z0 13 Education (Draft Plan).
(Docklands – Map 01)



C. 2.32 Delete ZO 02 New Residential Neighbourhood zoning in Carrigrohane.

(Carrigrohane – Map 16)

