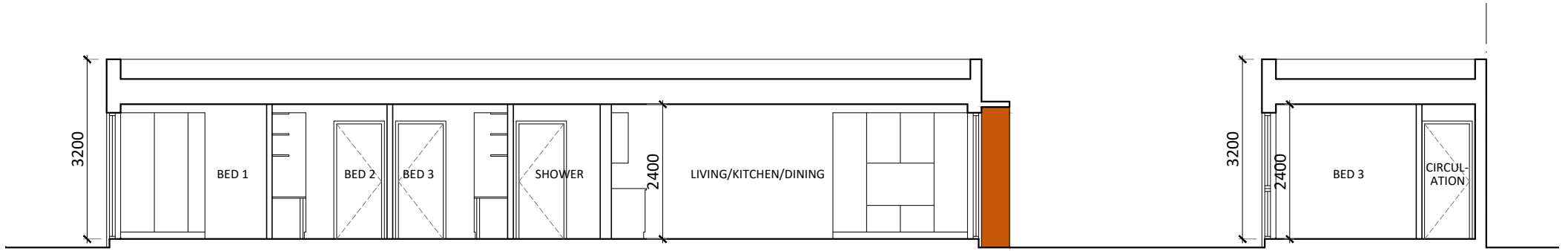
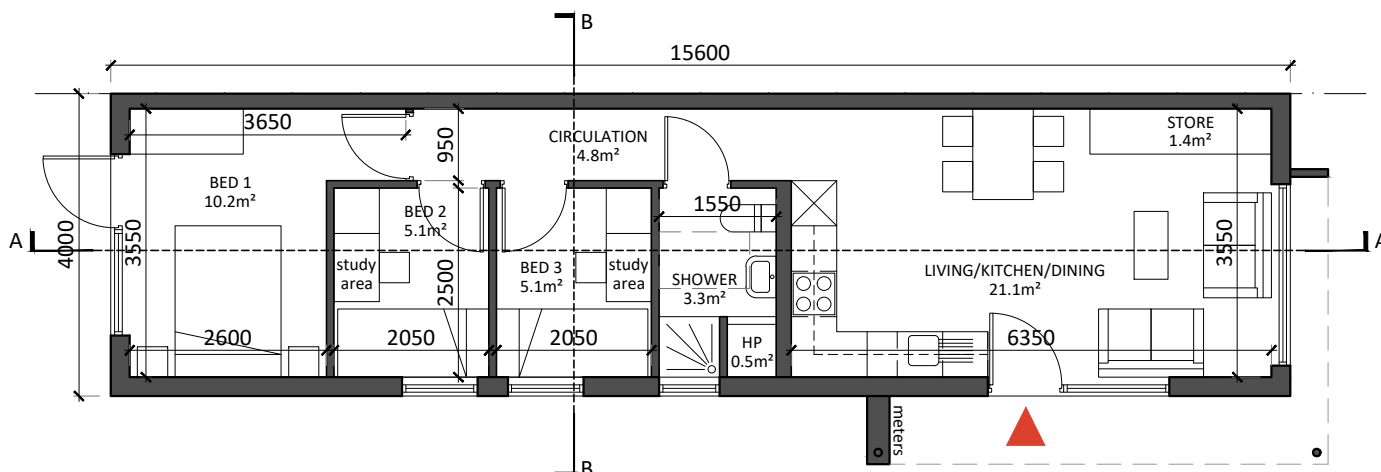


Type 1CM: 3-bedroom temporary modular unit adapted from Type 1AM
Side Elevation

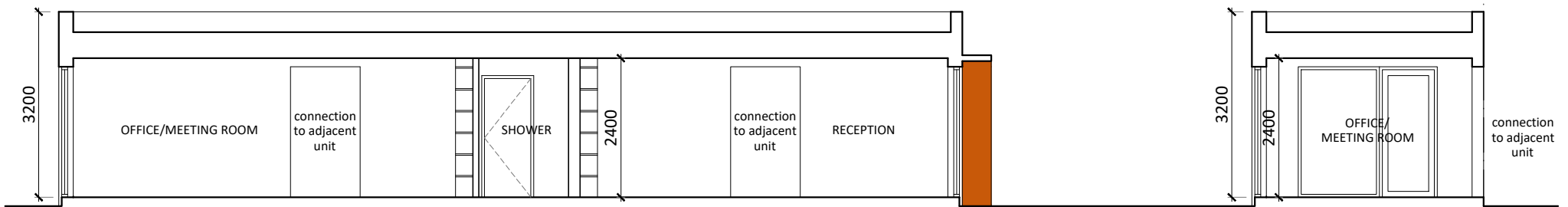


Type 1CM: 3-bedroom temporary modular unit adapted from Type 1AM
Section AA

Type 1CM: 3-bedroom temporary modular unit adapted from Type 1AM
Section BB

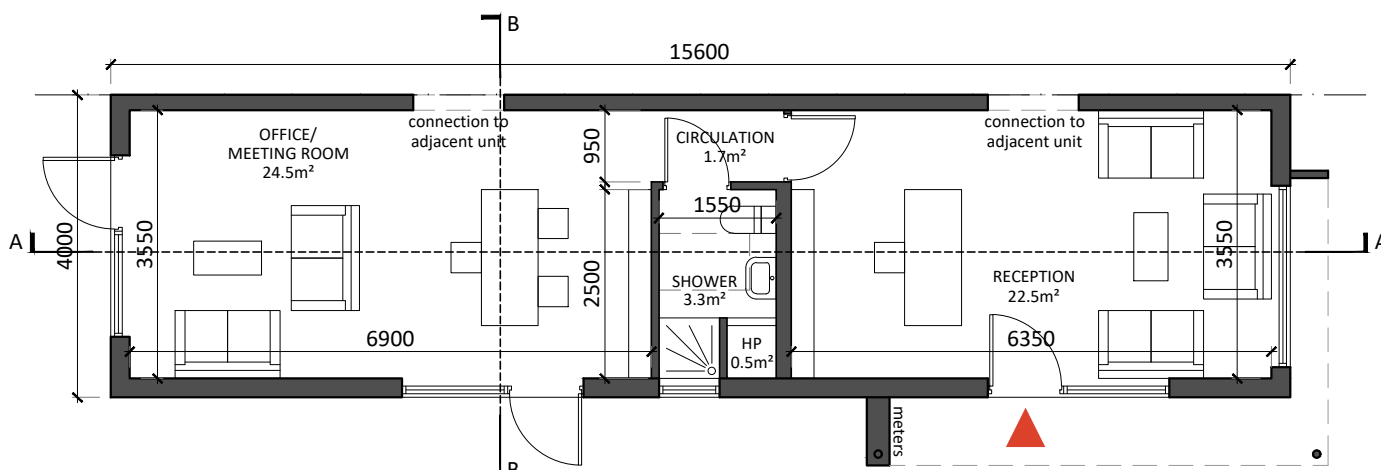


Type 1CM: 3-bedroom temporary modular unit adapted from Type 1AM (layout for family with 1 no. double bedroom & 2 no. single bedrooms with study area)
Ground Floor Plan
53.6m²



Type 1BM: temporary modular unit adapted from Type 1AM
Section AA

Type 1BM: temporary modular unit adapted from Type 1AM
Section BB



Type 1BM: temporary modular unit adapted from Type 1AM (internal layout for communal/meeting use)
Ground Floor Plan
53.6m²

Proposed Unit Plans, Sections & Elevations - Sheet 4

Please refer to proposed site layout plan for locations, orientations and proposed finished ground floor levels of units.

OS MAP REF: 6384-16; 6384-21
Copyright Ordnance Survey Ireland and Government of Ireland
Ordnance Survey Ireland Licence no. CYALS0378517

All dimensions in millimeters.
All levels (in metres) are related to Malin Head datum.



Revision Description	Date	Rev. No.	Issued by
Issued for Planning	15-08-2024	C02	AR
Issued for Planning (draft)	13-06-2024	C01	MW

Any reference to fire safety design or performance is presented for coordination purposes only. Refer only to the granted Fire Safety Certificate, and fire consultant's information for fire safety design, specification and performance.

Figured dimensions only to be used. This drawing is copyright of O'Mahony Pike Architects Ltd. All information is shared as per approved use in accordance with ISO19650-2:2018, Table 5; Standard Codes for Suitability of Models and Documents and the BEP. If the 'Status' field is empty, this information has been shared at 50 - WIP.



architecture | urban design
email: info@omahonypike.com
tel: +353 1 202 7400
fax: +353 1 283 0822
www.omahonypike.com

Dublin
The Chapel
Mount St. Anne's
Milltown, Dublin 6
D06 XN52 Ireland

Cork
One South Mall
Cork City
Co. Cork
T12 CCN3 Ireland

Project: Estuary Way
Location: St. Michael's Drive, Mahon, Cork
Client: Cork City Council

Drawing Title: Proposed Unit Plans, Sections & Elevations - Sheet 4
Drawing No.: 20001B-OMP-ZZ-DR-A-1004

Project Code: ----
Project Lead: AS
Drawn By: AR
Job No.: 20001B
Purpose: Issued for Planning

Scale @ A3: 1:100
Date Printed: 15-08-2024
Current Rev.: C02
Status: A3