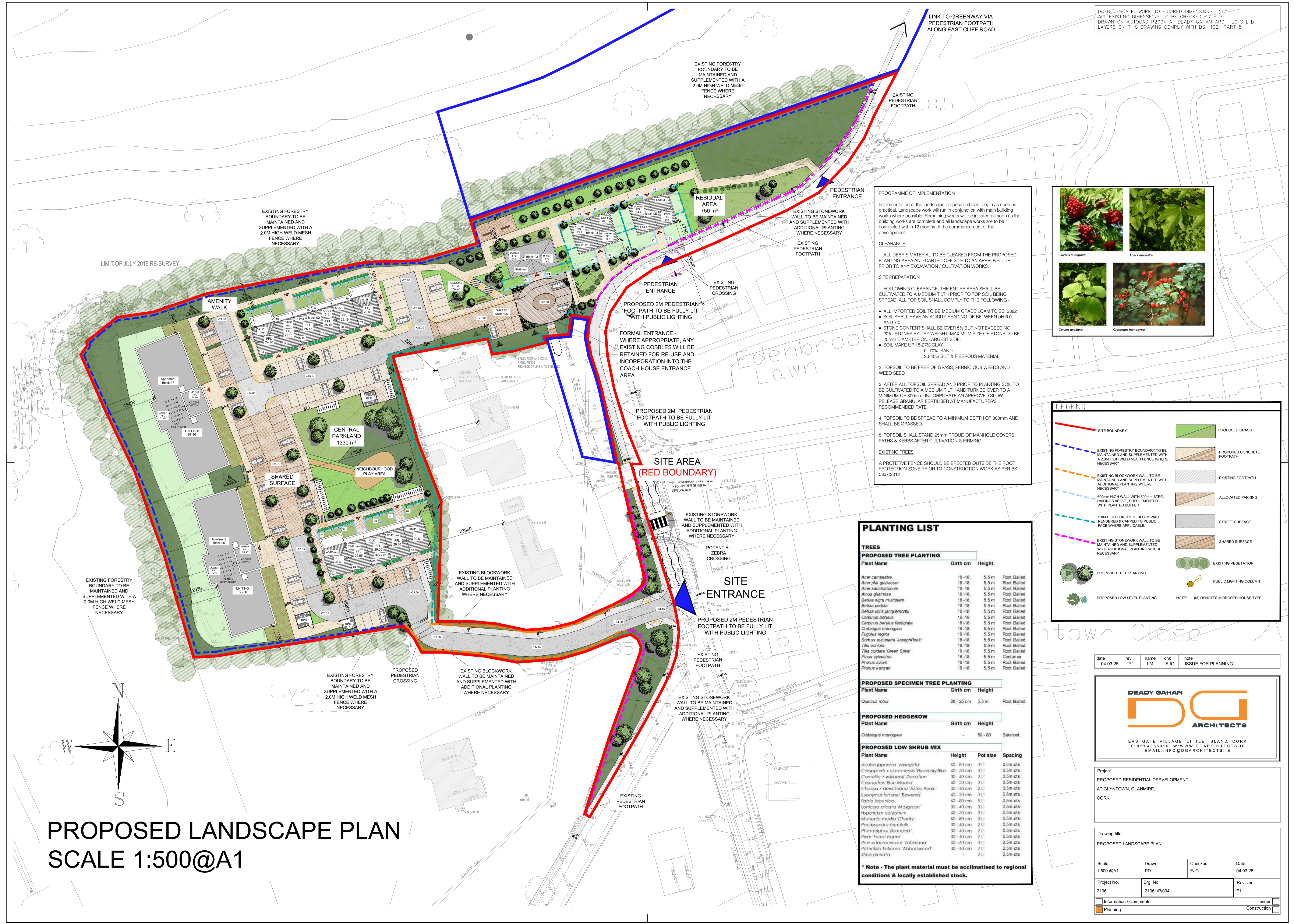


DO NOT SCALE. WORK TO FIGURED DIMENSIONS ONLY.
 ALL EXISTING DIMENSIONS TO BE CHECKED ON SITE.
 DRAWN ON AUTOCAD R2004 AT DEADY GAHAN ARCHITECTS LTD
 LAYERS ON THIS DRAWING COMPLY WITH BS 1192: PART 5



PROGRAMME OF IMPLEMENTATION

Implementation of the landscape proposals should begin as soon as practical. Landscape work will run in conjunction with main building works where possible. Remaining works will be initiated as soon as the building works are complete and all landscape works are to be completed within 12 months of the commencement of the development.

CLEARANCE

1. ALL DEBRIS MATERIAL TO BE CLEARED FROM THE PROPOSED PLANTING AREA AND CARRIED OFF SITE TO AN APPROVED TIP PRIOR TO ANY EXCAVATION / CULTIVATION WORKS.

SITE PREPARATION

1. FOLLOWING CLEARANCE, THE ENTIRE AREA SHALL BE CULTIVATED TO A MEDIUM TILT PRIOR TO TOP SOIL BEING SPREAD. ALL TOP SOIL SHALL COMPLY TO THE FOLLOWING -
 - ALL IMPORTED SOIL TO BE MEDIUM GRADE LOAM TO BS 3882
 - SOIL SHALL HAVE AN ACIDITY READING OF BETWEEN pH 6.0 AND 7.0
 - STONE CONTENT SHALL BE OVER 5% BUT NOT EXCEEDING 20%. STONES BY DRY WEIGHT. MAXIMUM SIZE OF STONE TO BE 20mm DIAMETER ON LARGEST SIDE.
 - SOIL MAKE UP 15-27% CLAY
0-70% SAND
20-40% SILT & FIBEROUS MATERIAL
2. TOPSOIL TO BE FREE OF GRASS, PERNICIOUS WEEDS AND WEED SEED
3. AFTER ALL TOPSOIL SPREAD AND PRIOR TO PLANTING SOIL TO BE CULTIVATED TO A MEDIUM TILT AND TILTED OVER TO A MINIMUM OF 300mm. INCORPORATE AN APPROVED SLOW RELEASE GRANULAR FERTILISER AT MANUFACTURERS RECOMMENDED RATE.
4. TOPSOIL TO BE SPREAD TO A MINIMUM DEPTH OF 300mm AND SHALL BE GRASSED.
5. TOPSOIL SHALL STAND 25mm PROUD OF MANHOLE COVERS, PATHS & KERBS AFTER CULTIVATION & FIRING.

EXISTING TREES

A PROTECTIVE FENCE SHOULD BE ERECTED OUTSIDE THE ROOT PROTECTION ZONE PRIOR TO CONSTRUCTION WORK AS PER BS 5837:2012



PLANTING LIST

TREES

PROPOSED TREE PLANTING

Plant Name	Girth cm	Height	Notes
Acer campestre	16-18	5.5 m	Root Balled
Acer platanoides	16-18	5.5 m	Root Balled
Acer saccharinum	16-18	5.5 m	Root Balled
Alnus glutinosa	16-18	5.5 m	Root Balled
Betula nigra mutistam	16-18	5.5 m	Root Balled
Betula pendula	16-18	5.5 m	Root Balled
Betula utilis jacquemontii	16-18	5.5 m	Root Balled
Carpinus betulus	16-18	5.5 m	Root Balled
Carpinus betulus fastigata	16-18	5.5 m	Root Balled
Cotoneaster monogyna	16-18	5.5 m	Root Balled
Fagus sylvatica	16-18	5.5 m	Root Balled
Sorbus aucuparia 'JosephRock'	16-18	5.5 m	Root Balled
Tilia echinora	16-18	5.5 m	Root Balled
Tilia cordata 'Green Spire'	16-18	5.5 m	Root Balled
Prunus sylvatica	16-18	5.5 m	Container
Prunus avium	16-18	5.5 m	Root Balled
Prunus kanzan	16-18	5.5 m	Root Balled

PROPOSED SPECIMEN TREE PLANTING

Plant Name	Girth cm	Height	Notes
Quercus robur	20 - 25 cm	5.5 m	Root Balled

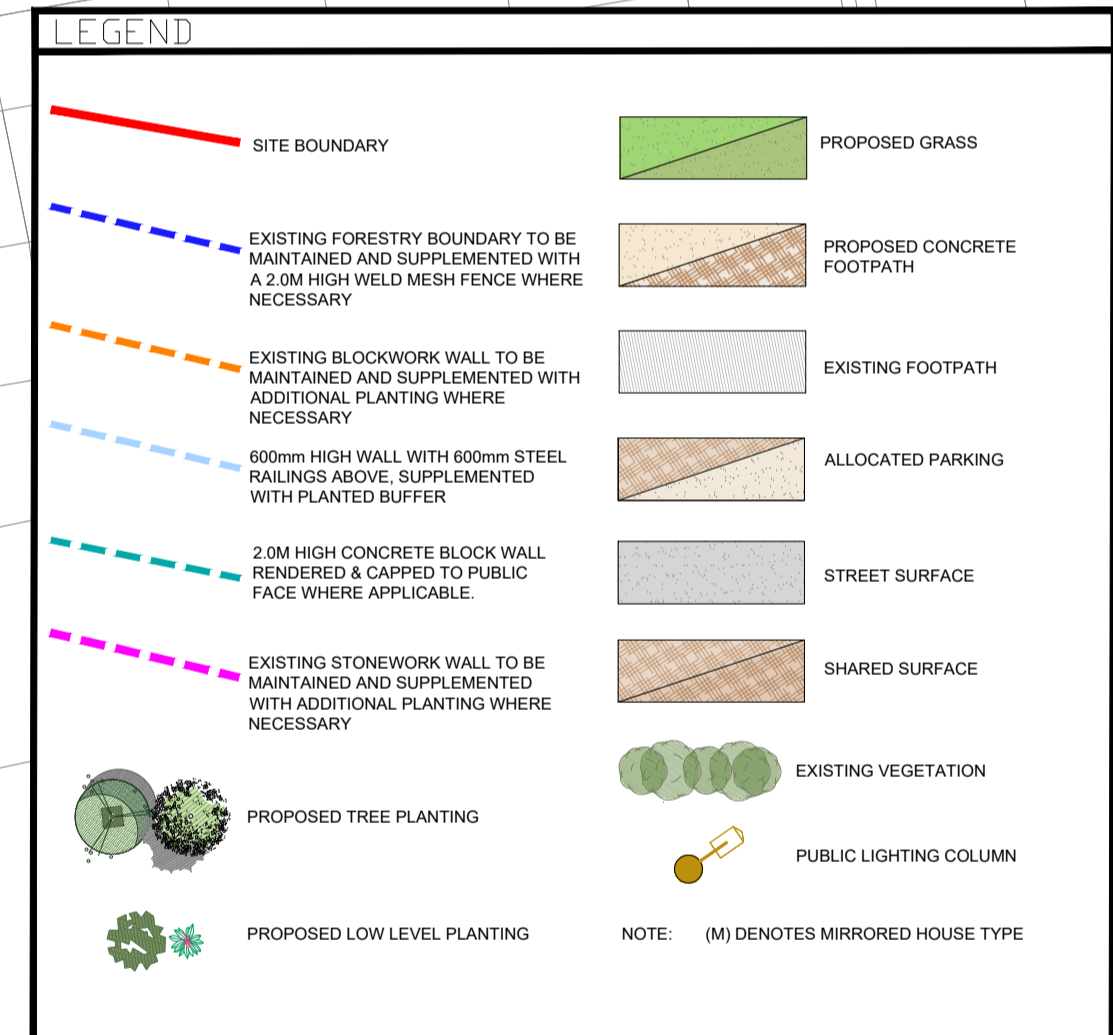
PROPOSED HEDGEROW

Plant Name	Girth cm	Height	Notes
Cotoneaster monogyna	-	60 - 80	Bareroot

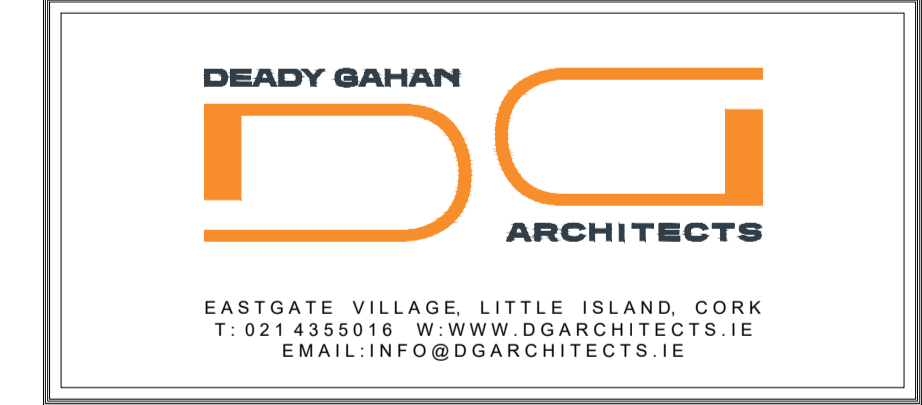
PROPOSED LOW SHRUB MIX

Plant Name	Height	Pot size	Spacing
Acuba japonica 'variegata'	40 - 80 cm	3 L	0.5m cts
Caryopteris x cladonensis 'Heavenly Blue'	40 - 50 cm	3 L	0.5m cts
Camellia x williamsii 'Donation'	30 - 40 cm	2 L	0.5m cts
Ceanothus 'Blue Mound'	40 - 50 cm	3 L	0.5m cts
Choisya x dewilleana 'Aztec Pearl'	30 - 40 cm	2 L	0.5m cts
Euonymus fortunei 'Kewensis'	40 - 50 cm	3 L	0.5m cts
Fatsia japonica	40 - 80 cm	5 L	0.5m cts
Lonicera pileata 'Maygreen'	30 - 40 cm	3 L	0.5m cts
Hypericum calycinum	40 - 50 cm	3 L	0.5m cts
Mahonia media 'Charity'	60 - 80 cm	3 L	0.5m cts
Rachysandra teretica	30 - 40 cm	2 L	0.5m cts
Philadelphus 'Beauleek'	30 - 40 cm	2 L	0.5m cts
Pieris 'Forest Flame'	30 - 40 cm	2 L	0.5m cts
Prunus laurocerasus 'Zabelliana'	40 - 60 cm	3 L	0.5m cts
Potentilla fruticosa 'Abbotwood'	30 - 40 cm	2 L	0.5m cts
Slipa pinnata	-	2 L	0.5m cts

*** Note - The plant material must be acclimatised to regional conditions & locally established stock.**



date	rev	name	chk	note
04.03.25	P1	LM	EJG	ISSUE FOR PLANNING



Project
 PROPOSED RESIDENTIAL DEVELOPMENT
 AT GLYNTOWN, GLANMIRE,
 CORK

Drawing title
 PROPOSED LANDSCAPE PLAN

Scale	Drawn	Checked	Date
1:500 @A1	PD	EJG	04.03.25
Project No.	Dwg. No.	Revision	
21061	21061/P004	P1	

Information | Comments | Planning | Tender | Construction

PROPOSED LANDSCAPE PLAN
SCALE 1:500@A1