

RESIDENTIAL DEVELOPMENT AT BALLINCOLLIG, CO. CORK

LANDSCAPE CONCEPT FOR INNISHMORE LAWN

MARCH 2025

SR
LA

SIMON RONAN LANDSCAPE ARCHITECTS

Cork Office
Levis Quay
Skibbereen
Co.Cork
Ireland
A94A431

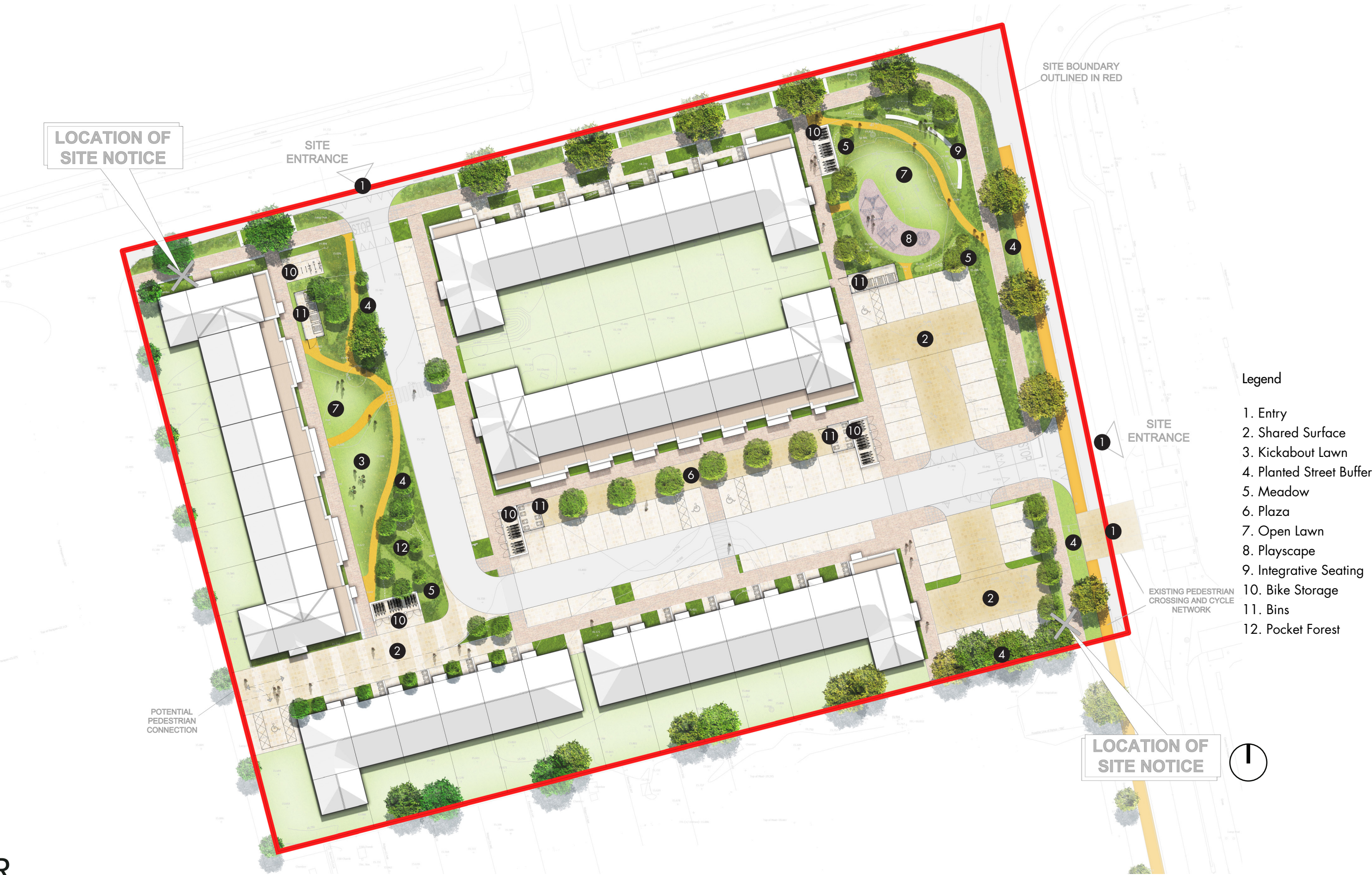
simon@simonronan.com

Dublin Office
25 Glengarriff Parade
Phibsborough
Dublin 7
Ireland
D07 XF25

+353 86 056 3434

LANDSCAPE DESIGN RATIONALE

ILLUSTRATIVE MASTERPLAN



STREET PLANTING BUFFERS



Street Planting



Landscape Planted Mounds in Open Area & Pocket Forest



Street Planting at Parking Areas

Natural playgrounds



Rest area, integrative seating

POCKET FOREST



Planting along Path edges



Urban pocket forest



Biodiveristy awareness

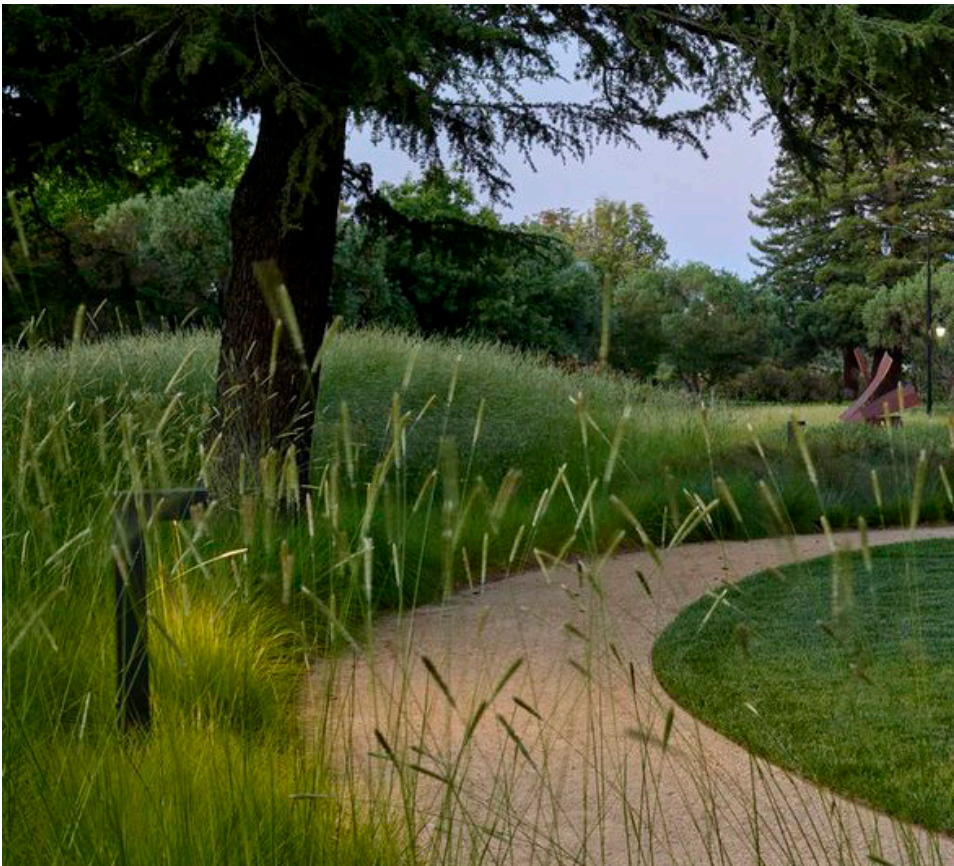


Dappled light along paths

OPEN LAWN



Playscape



Sunken lawn



Urban furniture

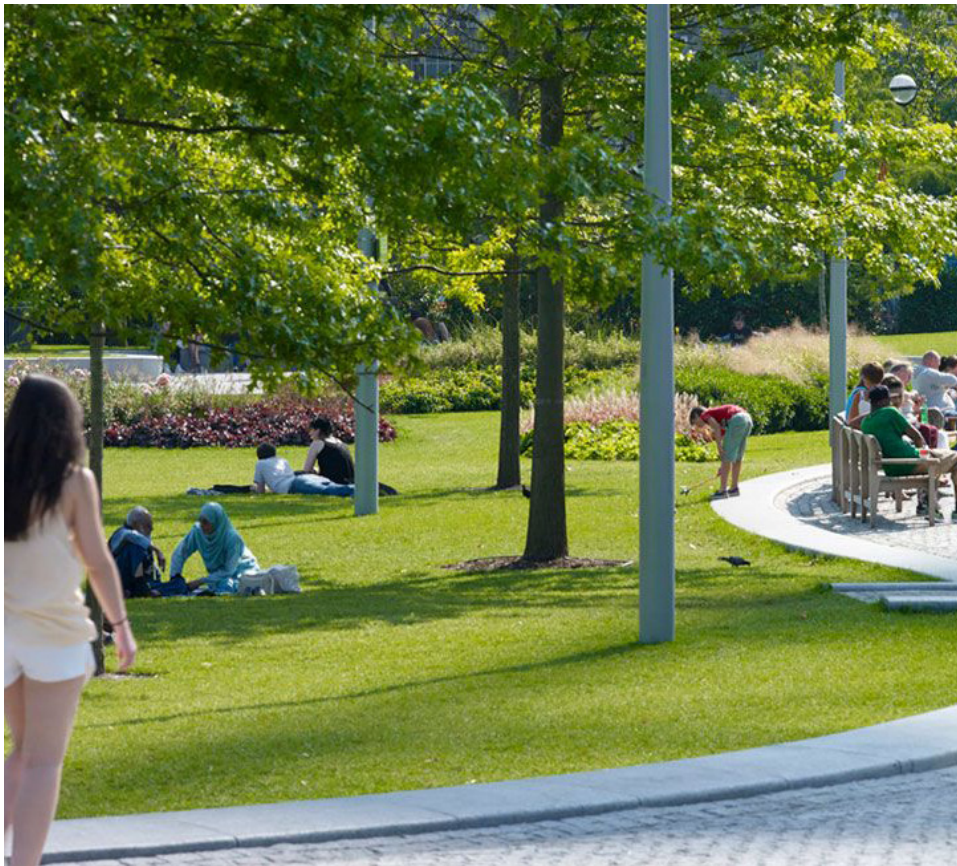


Pathways and planting



Playscape integration

KICKABOUT AREA AND PLAYSCAPE



Open public lawn



Kickabout edging



Sunken play area



Play along the way



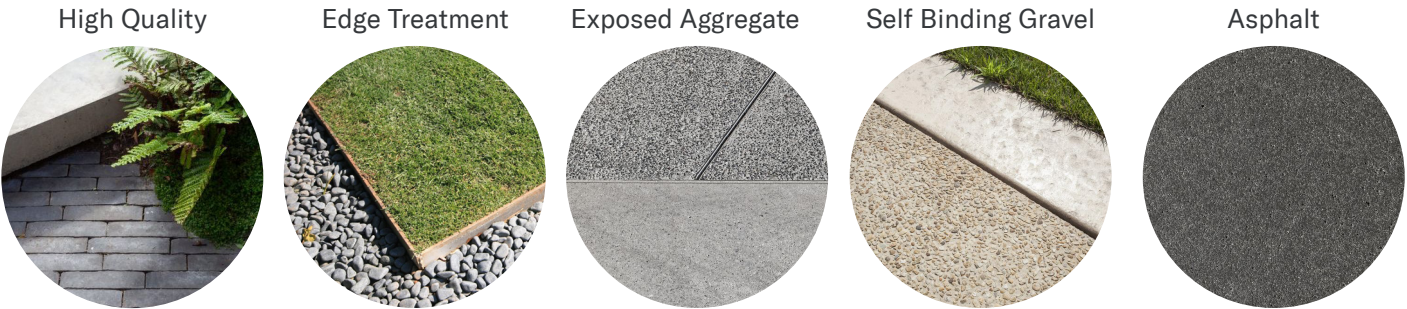
Playscape integration

LANDSCAPE MATERIALS

INDICATIVE HARD LANDSCAPE MATERIALS



Surface Finishes
The hard materials palettes have been selected to represent and respond to use and character of specific spaces. They will be durable and of high quality with patterning developed in the latter stages to indicate moments and celebrate



Walls
The boundaries between the site both external and internal will be of high quality and and provide a degree of visual transparency.



At raised beds

Furniture
Bins, bollards and seating have been selected as appropriate to the design language and surroundings within which they fit. these for the most part will be off the shelf products and specified



At bike parking

In pedestrian areas

Trees in paving

INDICATIVE HARD LANDSCAPE MATERIALS

High Quality Paving to Public Realm

It is proposed to bring a sense of warmth to the streets by specifying buff coloured granite paving flags to the pedestrian areas in various sizes with a



Courtyard Surface Materials

Paving proposals for courtyards should have a rustic feel to them using resin bound gravel.



Garden Paving Material

Highly durable Material and appropriate for the setting combination with natural elements.



PLANTING PALETTES

PLANTING STRATEGY - TREE PLANTING

Native trees are from Tree Council approved nurseries.

Wild flower seed mix purchased from an authentic Irish source.



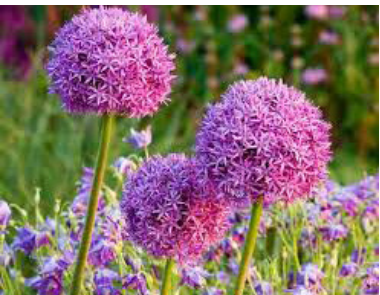
Shade loving plants for Woodlands



Shade loving plants for Woodlands

Woodland Tree Planting

Informed by the existing and formative tree planting and a native palette the tree planting will bleed into the site and grade out form north to south.



Bulbs to add seasonal interest



Native trees planting including birches and pines

Street Trees + Small Feature Trees

Specimen tree planting will provide year long interest and beauty - landmarks in the landscape, to celebrate and identify with.



Shade loving plants for Woodlands



Woodlands with ferns understory

Wildflower & Shrub Planting

To enhance bio-diverse credentials wildflower planting will occupy edges and large swathes of the sites periphery along with shade tolerant understory planting.



Pinus sylvestris
Scots Pine



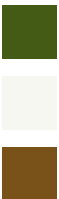
Sorbus aucuparia
Mountain Ash



Juniperus communis
Juniper



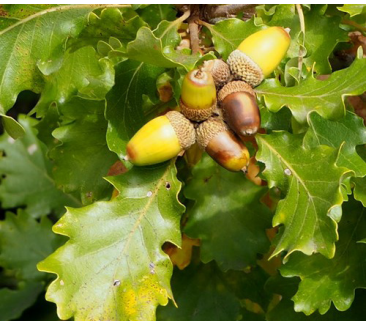
Magnolia grandiflora
Southern magnolia



Quercus robur
Oak (Pedunculate)



Pinus sylvestris
Scots Pine



Quercus petraea
Oak (Sessile)



Viburnum opulus
Guelder rose



PLANTING STRATEGY - THE POLLINATOR PLAN

The pollinator plan 2021-2025 has greatly influenced the planting palette and soft landscape strategy. This, combined with a selection of native plant species, will define the landscape design. Planting will educate and define public paths, distinguishing them from communal or private spaces.

Native Meadow

Meadows managed in the following way will allow bloom throughout the pollinator season. A further benefit is that bumblebees are provided with an undisturbed area for nesting. Over a number of years, the area will become more and more flower-rich with local species that are adapted to the site's conditions.



Perennial Flowers For Pollinators

Incorporate pollinator friendly perennial plants into the local community to provide food for pollinators from spring through to autumn.

Pollinator friendly perennial plants are excellent sources of pollen and nectar. They are much more attractive to bees when planted in blocks rather than as single plants. Having a pollinator friendly perennial bed is an excellent way to provide food for pollinators across their lifecycle.



Flowering Trees And Shrubs

Incorporate a mix of pollinator friendly trees and shrubs into the local community that will flower throughout the season. An orchard can be a wonderful addition for pollinators and the community.

It is important to priorities increasing native plants (trees, shrubs, wildflowers) across the landscape to provide food for pollinators.



Annual Flowers For Pollinators

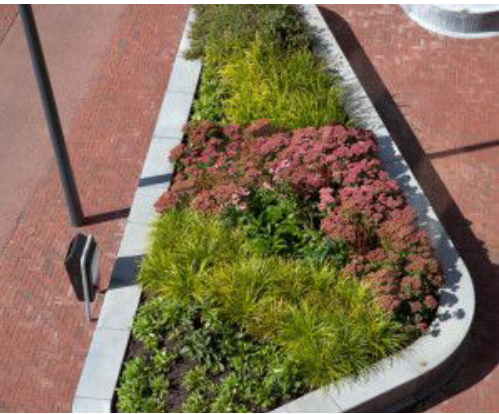
Work with local authorities to ensure a component of annual planting in parks is with pollinator friendly annual plants - single rather than double flowered varieties.

You should always try to select scented, single-flowered varieties. The block planting of these can be an excellent source of food for pollinators.



Pollinator Friendly Urban Planters

Identify some urban planters or hanging baskets where the standard annual bedding mix could be replaced by perennial pollinator friendly plants.



Training

Facilitate or execute local training sessions on pollinators and how to conserve them. Resources will be available for interested parties to deliver training on topics such as creating nest sites for wild pollinators, identifying common pollinator species, participating in the AllIreland Bumblebee Monitoring Scheme, and collecting, storing, and using local wildflower seed to improve areas managed as small grassy meadows in parks, schools, along greenways, and so on.



PLANTING STRATEGY - THE POLLINATOR PLAN

Hedgerows For Pollinators

Flowering hedgerows with hazel, willow, blackthorn, and hawthorn provide food for wild bees as they emerge from hibernation in spring. Bramble is a good source of ood in the summer, and ivy in the fall. Bumblebees frequently nest in long grass around the foot of hedgerows.



Eliminate The Use Of Pesticides

Identify some instances where pesticide use may be eliminated. This could refer to streets or locations where your group is willing to take on manual weed management. The majority of herbicides are applied along edging or at tree bases where mowers cannot reach. Identify sections of south-facing edging that could not be sprayed to give solitary bee nesting sites.



Bee Hotels For Pollinators

Incorporate a limited number of solitary bee nest boxes into the community to attract cavity nesting solitary bees. Bee hotels can be valuable and effective awareness-raising tools, however actions 13 and 14 are superior methods for creating nest sites. In terms of reducing the chance of disease and predators harming the bees, a number of little hotels outperforms one large one.



Clover Lawns

Identify small areas where grass could be entirely replaced with a permanent clover mix. Red and white clovers will provide colour, and are a very important food source for bees.



Awareness

Advocate for the All-Ireland Pollinator Plan among local companies, urging them to create pollinator-friendly outdoor areas or provide sponsorship for local initiatives that support pollinators.



Signage

Install informative signs elucidating the significance of pollinators and detailing local efforts in accordance with the All-Ireland Pollinator Plan. Signage templates are available for download on the website.



RESIDENTIAL DEVELOPMENT AT BALLINCOLLIG, CO. CORK

LANDSCAPE CONCEPT FOR INNISHMORE LAWN

MARCH 2025

SR
LA

SIMON RONAN LANDSCAPE ARCHITECTS

Cork Office
Levis Quay
Skibbereen
Co.Cork
Ireland
A94A431

simon@simonronan.com

Dublin Office
25 Glengarriff Parade
Phibsborough
Dublin 7
Ireland
D07 XF25

+353 86 056 3434