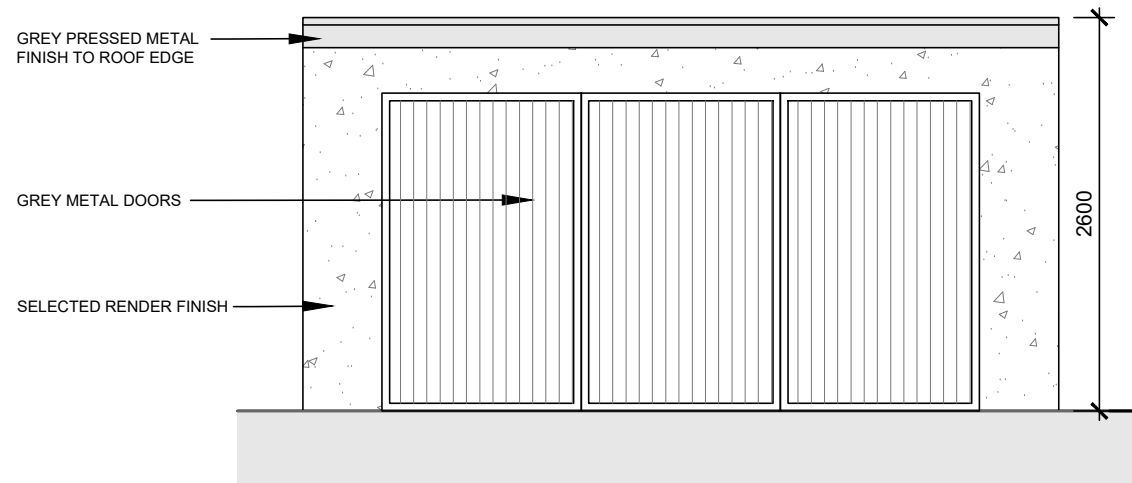


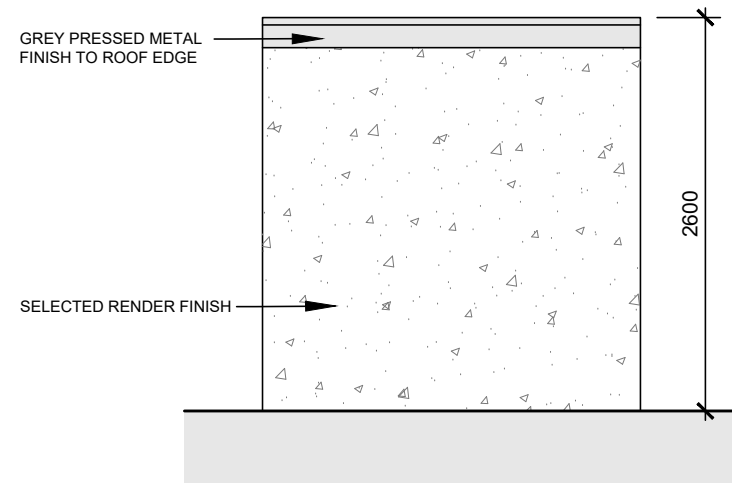
BIKE STORE ENCLOSURE (20no bike spaces per unit)

DO NOT SCALE. WORK TO FIGURED DIMENSIONS ONLY.
ALL EXISTING DIMENSIONS TO BE CHECKED ON SITE.
DRAWN ON AUTOCAD R2004 AT DEADY GAHAN ARCHITECTS LTD
LAYERS ON THIS DRAWING COMPLY WITH BS 1192: PART 5



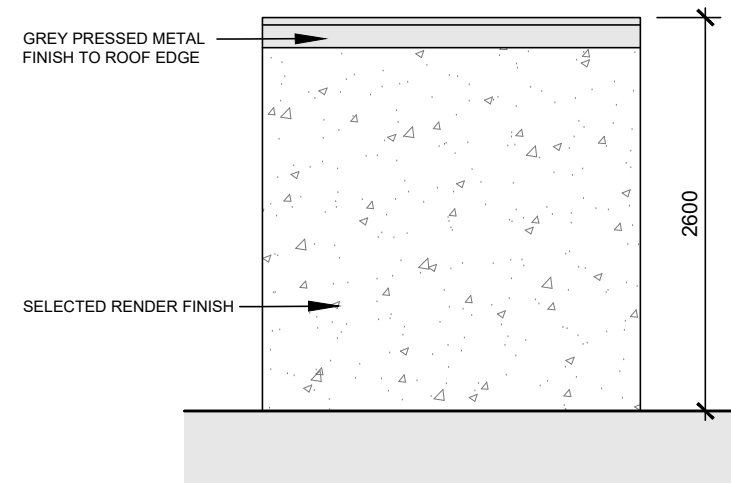
FRONT ELEVATION

SCALE 1:50 @ A3



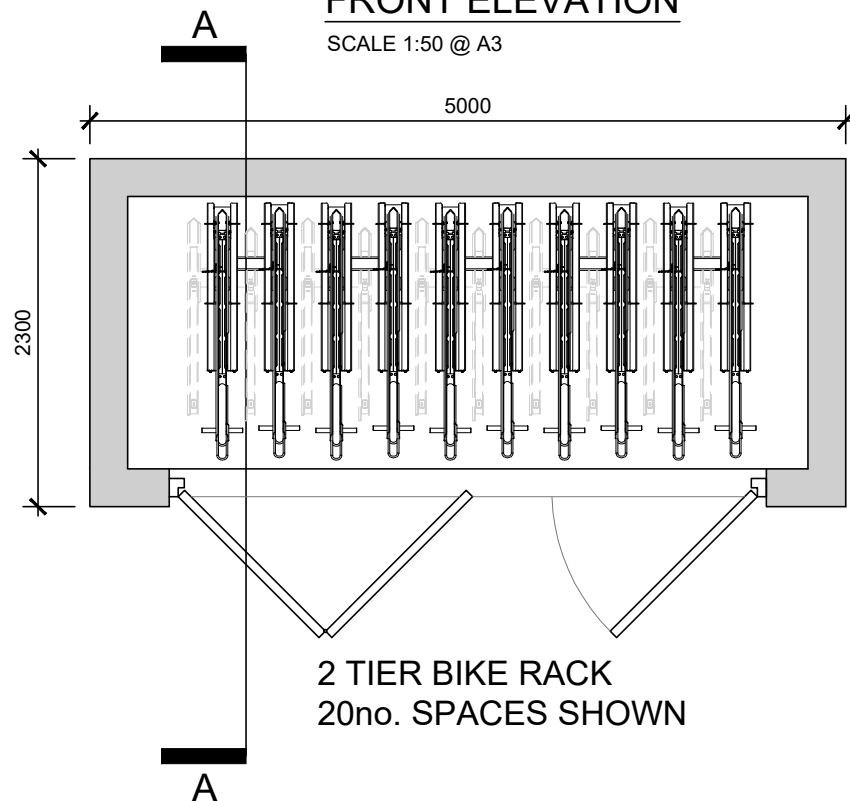
SIDE ELEVATION

SCALE 1:50 @ A3

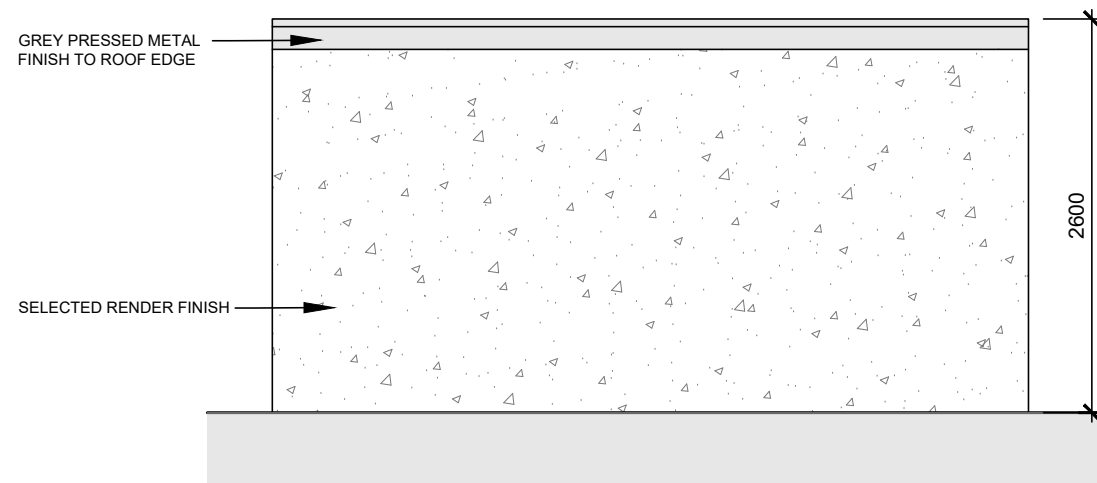


SIDE ELEVATION

SCALE 1:50 @ A3

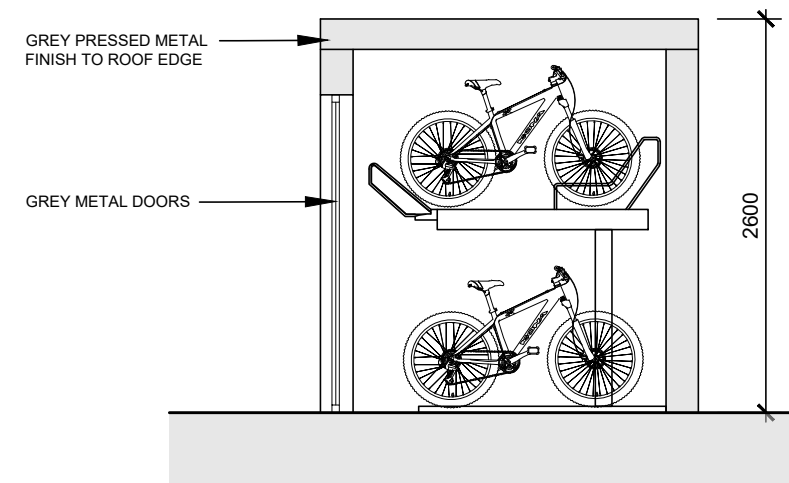


2 TIER BIKE RACK
20no. SPACES SHOWN



REAR ELEVATION

SCALE 1:50 @ A3

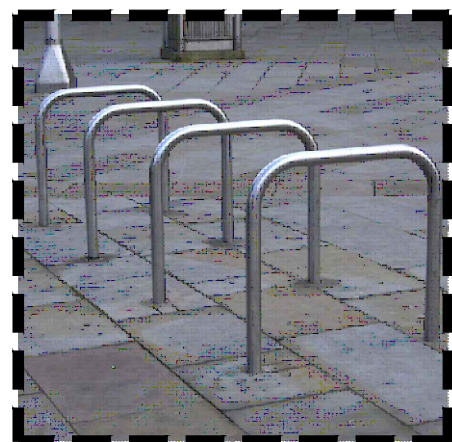


SECTION A-A

SCALE 1:50 @ A3

PLAN

SCALE 1:50 @ A3



PROPOSED SHEFFIELD STANDS
FOR SHORT STAY VISITORS



Key Plan

NTS @ A3

TYPICAL APARTMENT BIKE STORE (RANGES FROM 14-20 BIKE SPACES)

SCALE 1:50 @ A3

APARTMENTS
BIKE PARKING SCHEDULE

14no 1B apartment units x 1.5 spaces = 21
26no 2B apartment units x 2.5 spaces = 65
(these are apartments without direct access to a GF private amenity
space/terrace for bike storage)
- 86no. bike spaces required in total

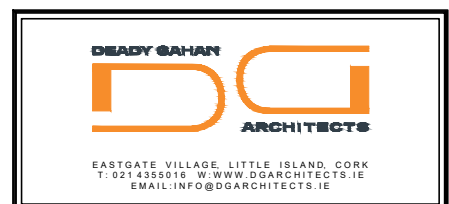
- 4 74 no. spaces (In secure enclosure)
- 1 18 no. visitors spaces (Covered)

TOTAL APARTMENT BIKE PARKING
SPACES PROVIDED = 92no.

**This is in line with the bike parking standards in
the 2023 Apartment Guidelines

Note: Please refer to Site Plan drawing no.
21175/P/003 for orientation.

date	rev	name	chk	note
18.06.25	P1	LM	EJG	ISSUE FOR PLANNING



Project
PROPOSED RESIDENTIAL DEVELOPMENT
AT LEHENAGHMORE,
CO. CORK.

Drawing title
TYPICAL APARTMENT BIKE STORE - 20 BIKES

Scale 1:50 @ A3	Drawn LM	Checked EJG	Date 01.07.24
Project No. 21175	Drg. No. 21175/P/009B	Revision P1	
<input type="checkbox"/> Information / Comments		<input type="checkbox"/> Tender	
<input type="checkbox"/> Planning		<input type="checkbox"/> Construction	