

CONFIRMATION OF FEASIBILITY

Stephen O'Donoghue
DOSA Consulting Engineers
Joyce House, Barrack Square, Ballincollig
Co. Cork P31KP84

1 November 2024

**Our Ref: CDS24006240 Pre-Connection Enquiry
Lehenaghmore, Togher, Co., Cork**

Uisce Éireann
Bosca OP 448
Oifig Sheachadta na
Cathrach Theas
Cathair Chorcaí

Uisce Éireann
PO Box 448
South City
Delivery Office
Cork City

www.water.ie

Dear Applicant/Agent,

We have completed the review of the Pre-Connection Enquiry.

Uisce Éireann has reviewed the pre-connection enquiry in relation to a Water & Wastewater connection for a Housing Development of 154 unit(s) at Lehenaghmore, Togher, Co., Cork, (the **Development**).

Based upon the details provided we can advise the following regarding connecting to the networks;

- **Water Connection**
 - Feasible Subject to upgrades
 - In order to accommodate this proposed development, Upsizing of the existing 4" AC main to 150mm ID will be required for a length of Approximately 180 meters towards chestnut drive.
The Arterial routeway through the development known as "Glenmore Heights" shall provide for a Internal spine main of 150mm ID to feed/service this development. A Pump Station in the development known as "Glenmore Heights" shall also make provision for this proposed development. The proposed Connection to the Networks may be through 3rd party infrastructure (the development known as "Glenmore Heights) and all relevant Quality Assurances, Wayleaves, Easements, Confirmation of capacity and Permissions would need to be obtained by the Developer.

Stiúrthóirí / Directors: Tony Keohane (Cathaoirleach / Chairman), Niall Gleeson (POF / CEO), Christopher Banks, Fred Barry, Gerard Britchfield, Liz Joyce, Patricia King, Eileen Maher, Cathy Mannion, Michael Walsh.

Oifig Chláraithe / Registered Office: Teach Colvill, 24-26 Sráid Thalbóid, Baile Átha Cliath 1, D01 NP86 / Colvill House, 24-26 Talbot Street, Dublin, Ireland D01NP86

Is cuideachta ghníomhaíochta ainmnithe atá faoi theorainn scaireanna é Uisce Éireann / Uisce Éireann is a design activity company, limited by shares. Cláraithe in Éirinn Uimh.: 530363 / Registered in Ireland No.: 530363.

- **Wastewater Connection**
 - Feasible Subject to upgrades
 - In order to accommodate this proposed development, Network Upgrades of circa 260 meters will be required. This figure includes and is Contingent on CDS2400056201 (the development known as "Glenmore Heights) works being completed. The proposed Connection to the Networks may be through 3rd party infrastructure (the development known as "Glenmore Heights) and all relevant Quality Assurances, Wayleaves, Easements, Confirmation of capacity and Permissions would need to be obtained by the Developer.

This letter does not constitute an offer, in whole or in part, to provide a connection to any Uisce Éireann infrastructure. Before the Development can be connected to our network(s) you must submit a connection application and be granted and sign a connection agreement with Uisce Éireann.

As the network capacity changes constantly, this review is only valid at the time of its completion. As soon as planning permission has been granted for the Development, a completed connection application should be submitted. The connection application is available at www.water.ie/connections/get-connected/

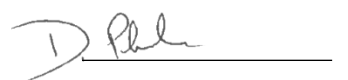
Where can you find more information?

- **Section A** - What is important to know?
- **Section B** - Details of Uisce Éireann's Network(s)

This letter is issued to provide information about the current feasibility of the proposed connection(s) to Uisce Éireann's network(s). This is not a connection offer and capacity in Uisce Éireann's network(s) may only be secured by entering into a connection agreement with Uisce Éireann.

For any further information, visit www.water.ie/connections, email newconnections@water.ie or contact 1800 278 278.

Yours sincerely,



Dermot Phelan
Connections Delivery Manager

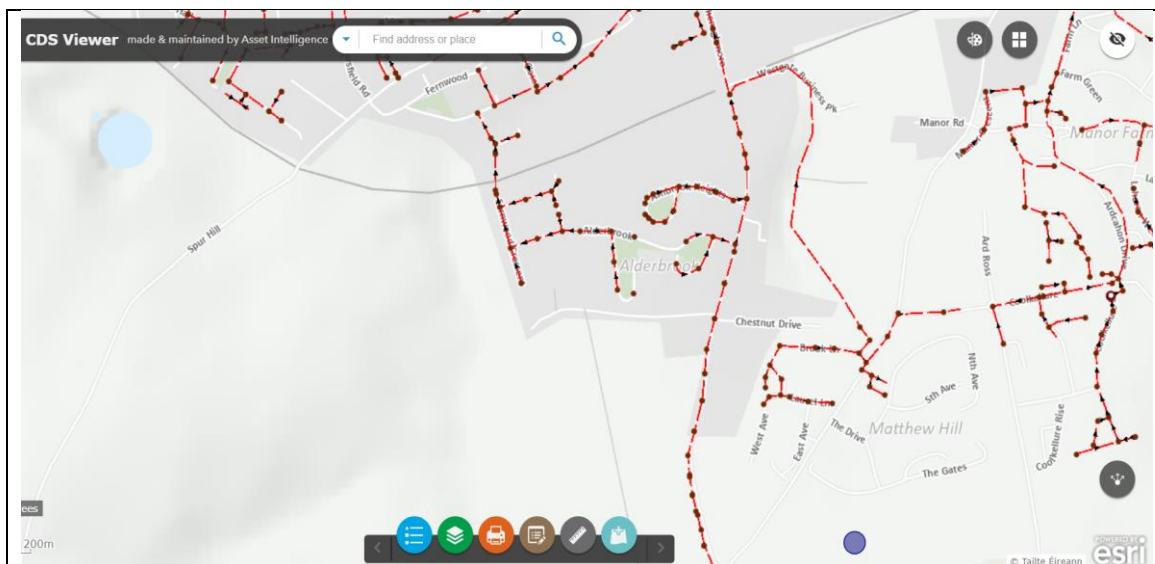
Section A - What is important to know?

What is important to know?	Why is this important?
Do you need a contract to connect?	<ul style="list-style-type: none"> • Yes, a contract is required to connect. This letter does not constitute a contract or an offer in whole or in part to provide a connection to Uisce Éireann's network(s). • Before the Development can connect to Uisce Éireann's network(s), you must submit a connection application <u>and be granted and sign</u> a connection agreement with Uisce Éireann.
When should I submit a Connection Application?	<ul style="list-style-type: none"> • A connection application should only be submitted after planning permission has been granted.
Where can I find information on connection charges?	<ul style="list-style-type: none"> • Uisce Éireann connection charges can be found at: https://www.water.ie/connections/information/charges/
Who will carry out the connection work?	<ul style="list-style-type: none"> • All works to Uisce Éireann's network(s), including works in the public space, must be carried out by Uisce Éireann*. <p>*Where a Developer has been granted specific permission and has been issued a connection offer for Self-Lay in the Public Road/Area, they may complete the relevant connection works</p>
Fire flow Requirements	<ul style="list-style-type: none"> • The Confirmation of Feasibility does not extend to fire flow requirements for the Development. Fire flow requirements are a matter for the Developer to determine. • What to do? - Contact the relevant Local Fire Authority
Plan for disposal of storm water	<ul style="list-style-type: none"> • The Confirmation of Feasibility does not extend to the management or disposal of storm water or ground waters. • What to do? - Contact the relevant Local Authority to discuss the management or disposal of proposed storm water or ground water discharges.
Where do I find details of Uisce Éireann's network(s)?	<ul style="list-style-type: none"> • Requests for maps showing Uisce Éireann's network(s) can be submitted to: datarequests@water.ie

<p>What are the design requirements for the connection(s)?</p>	<ul style="list-style-type: none"> • The design and construction of the Water & Wastewater pipes and related infrastructure to be installed in this Development shall comply with <i>the Uisce Éireann Connections and Developer Services Standard Details and Codes of Practice</i>, available at www.water.ie/connections
<p>Trade Effluent Licensing</p>	<ul style="list-style-type: none"> • Any person discharging trade effluent** to a sewer, must have a Trade Effluent Licence issued pursuant to section 16 of the Local Government (Water Pollution) Act, 1977 (as amended). • More information and an application form for a Trade Effluent License can be found at the following link: https://www.water.ie/business/trade-effluent/about/ <p>**trade effluent is defined in the Local Government (Water Pollution) Act, 1977 (as amended)</p>

The map included below outlines the current Uisce Éireann infrastructure adjacent the Development: To access Uisce Éireann Maps email datarequests@water.ie





WW.

Reproduced from the Ordnance Survey of Ireland by Permission of the Government. License No. 3-3-34

Note: The information provided on the included maps as to the position of Uisce Éireann's underground network(s) is provided as a general guide only. The information is based on the best available information provided by each Local Authority in Ireland to Uisce Éireann.

Whilst every care has been taken in respect of the information on Uisce Éireann's network(s), Uisce Éireann assumes no responsibility for and gives no guarantees, undertakings or warranties concerning the accuracy, completeness or up to date nature of the information provided, nor does it accept any liability whatsoever arising from or out of any errors or omissions. This information should not be solely relied upon in the event of excavations or any other works being carried out in the vicinity of Uisce Éireann's underground network(s). The onus is on the parties carrying out excavations or any other works to ensure the exact location of Uisce Éireann's underground network(s) is identified prior to excavations or any other works being carried out. Service connection pipes are not generally shown but their presence should be anticipated.