

SCHEDULE OF ACCOMMODATION

- HOUSE TYPE 8: 5 No. 2-STOREY, 3-BED TERRACED HOUSE
- HOUSE TYPE 7: 6 No. 3-STOREY, 3-BED TERRACED HOUSE
- DUPLEX BLOCK CONSISTING OF: 1 No. 1-STOREY, 2-BED APARTMENT
2 No. 2-STOREY, 2-BED MAISONNETTES

HOUSE TYPE 7 3B-5P-3S note: the figures are consistent with the DHLGH Design Manual for Quality Housing House Type H7 layout

RELEVANT AREA	PROPOSED UNIT		EQUIVALENT DEPT GUIDELINES		COMPARISON OF FLOOR AREA %
	ACTUAL WIDTH	ACTUAL AREA (sqm)	MIN WIDTH	MIN FLOOR AREA	
Bedroom 1	3.800	14.2	2.8	13.0	109.2
Bedroom 2	3.200	11.4	2.8	11.4	100.0
Bedroom 3	2.200	7.20	2.1	7.10	101.4
AGG. BEDROOM AREA		32.8		32.0	102.5
TOTAL STORAGE AREA		6.6		5.0	132.0
TOTAL LIVING/KITCHEN/DINING AREA		34.4		34.0	100.3
GROSS INTERNAL AREA		109.8		102.0	107.7
PRIVATE OPEN SPACE	Refer to site plan on this sheet		From Compact Settlements Guidance 2025		40.0

HOUSE TYPE 8 3B-5P-2S note: the figures are consistent with the DHLGH Design Manual for Quality Housing House Type H8 layout

RELEVANT AREA	PROPOSED UNIT		EQUIVALENT DEPT GUIDELINES		COMPARISON OF FLOOR AREA %
	ACTUAL WIDTH	ACTUAL AREA (sqm)	MIN WIDTH	MIN FLOOR AREA	
Bedroom 1	2.850	13.4	2.8	13.0	102.3
Bedroom 2	3.100	11.6	2.8	11.4	101.7
Bedroom 3	2.900	8.40	2.1	7.10	118.3
AGG. BEDROOM AREA		33.4		32.0	104.4
TOTAL STORAGE AREA		4.9		5.0	98.0
TOTAL LIVING/KITCHEN/DINING AREA		34.0		34.0	100.0
GROSS INTERNAL AREA		98.2		92.0	106.8
PRIVATE OPEN SPACE	Refer to site plan on this sheet				40.0

GROUND FLOOR APARTMENT (UNIVERSAL DESIGN STANDARDS) 2B-4P-1S note: target areas are taken from the DHLGH Design Manual for Quality Housing

RELEVANT AREA	PROPOSED UNIT		EQUIVALENT DEPT GUIDELINES		COMPARISON OF FLOOR AREA %
	ACTUAL WIDTH	ACTUAL AREA (sqm)	MIN WIDTH	MIN FLOOR AREA	
Bedroom 1	3.100	15.0	15.0	13.0	115.4
Bedroom 2	3.275	13.1	2.8	11.4	114.9
AGG. BEDROOM AREA		28.1		25.0	112.4
TOTAL STORAGE AREA	5.7 * 3.7 external	9.4		7.0	134.3
TOTAL LIVING/KITCHEN/DINING AREA		30.0		30.0	100.0
GROSS INTERNAL AREA		78.6		73.0	107.7
PRIVATE OPEN SPACE		47.8	From Design Standards for New Apartments 2025		7.0

MAISONETTE 1 2B-4P-2S note: target areas are taken from the DHLGH Design Manual for Quality Housing

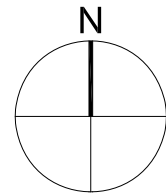
RELEVANT AREA	PROPOSED UNIT		EQUIVALENT DEPT GUIDELINES		COMPARISON OF FLOOR AREA %
	ACTUAL WIDTH	ACTUAL AREA (sqm)	MIN WIDTH	MIN FLOOR AREA	
Bedroom 1	2.800	14.1	2.8	13.0	108.5
Bedroom 2	3.230	13.7	2.8	11.4	120.2
AGG. BEDROOM AREA		27.8		25.0	111.2
TOTAL STORAGE AREA		7.5		7.0	107.1
TOTAL LIVING/KITCHEN/DINING AREA		30.0		30.0	100.0
GROSS INTERNAL AREA	92.2 *	100.4		80.0	115.3 *
PRIVATE OPEN SPACE		7.0	From Design Standards for New Apartments 2025		7.0

* less 12.2sqm ground floor circulation

MAISONETTE 2 2B-4P-2S note: target areas are taken from the DHLGH Design Manual for Quality Housing

RELEVANT AREA	PROPOSED UNIT		EQUIVALENT DEPT GUIDELINES		COMPARISON OF FLOOR AREA %
	ACTUAL WIDTH	ACTUAL AREA (sqm)	MIN WIDTH	MIN FLOOR AREA	
Bedroom 1	2.800	13.2	2.8	13.0	101.5
Bedroom 2	3.665	14.1	2.8	11.4	123.7
AGG. BEDROOM AREA		27.3		25.0	109.2
TOTAL STORAGE AREA		7.0		7.0	100.0
TOTAL LIVING/KITCHEN/DINING AREA		32.2		30.0	107.3
GROSS INTERNAL AREA	91.5 *	103.7		80.0	114.4 *
PRIVATE OPEN SPACE		7.0	From Design Standards for New Apartments 2025		7.0

* less 12.2sqm ground floor circulation



Do not scale from drawings. Use dimensioned figure only.
Contractor to check all dimensions on site.
City Architect to be informed of any discrepancies before work proceeds.

Notes

CYAL50441117
© Taitte Eireann - Surveying.

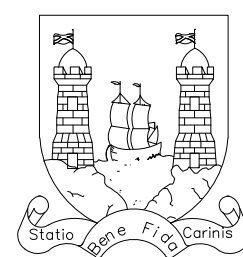
— SITE BOUNDARY

Rev.	Description	Date
01	Finalised for Planning stage	Sept 2025
02	Area Schedules Included	Oct 2025

CITY ARCHITECT'S DEPARTMENT

Telephone: 021 4924335
E-mail: city_architect@corkcity.ie
Web: http://www.corkcity.ie

CATHAL O'BOYLE, CITY ARCHITECT.
CORK CITY COUNCIL, CITY HALL, CORK, T12 T997



Team Leader	Kevin Cullen
Project Architects	Aleksandra Czamecka
Project Technicians	
Project Supervisor	DJF Engineering Services Ltd.
Quantity Surveyor	Deasy Walley Partnership
Civil/Structural Consultant	DJF Engineering Services Ltd.
M & E Consultant	Matt O'Mahony & Associates
Landscape Architect	
Fire Consultant	CK Fire Engineering Ltd.

Title SCHEDULE OF ACCOMMODATION	Scale	1:500 @ A1
	Date	Aug 2025
	Drawn By	QT
	Checked By	KC
Plottfiles Ref.		

Drawing Status	Job No.	Drawing No.	Rev.
Planning	2025.010	PL 02.02	02

Project
CNWQR PHASE 1D EAST