

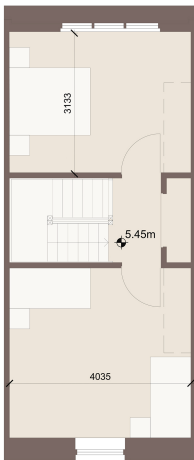
MATERIAL PALETTE

1. Fibre cement slates
2. Textured render
3. Selected red brick
4. factory-finished metal rainwater goods
5. Aluminium clad/composite windows/doors
6. Pre-cast concrete sills, 100mm face
7. Painted timber frame/side panel/composite entrance door
8. Metal standing seam roof/cladding to selected colour
9. Fibre cement cladding to selected colour
10. Selected cream-coloured brick

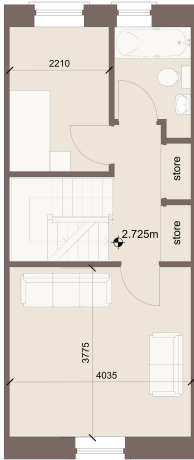
Do not scale from drawings. Use dimensioned figure only.  
Contractor to check all dimensions on site.  
City Architect to be informed of any discrepancies before work proceeds.

Notes

Rev.	Description	Date
01	Finalised for Planning stage	Sept 2025
02	Internal Dimensions Added	Oct 2025



2nd floor plan



1st floor plan



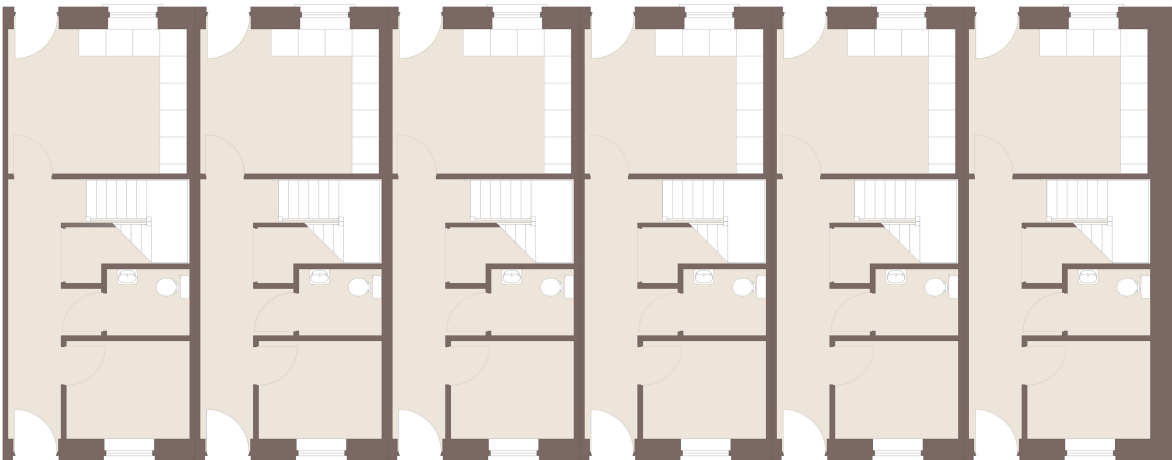
ground floor plan



block south elevation



block north elevation



block ground floor plan

CITY ARCHITECT'S DEPARTMENT

Telephone: 021 4824335  
E-mail: city\_architect@corkcity.ie  
Web: http://www.corkcity.ie

CATHAL O'BOYLE, CITY ARCHITECT,  
CORK CITY COUNCIL, CITY HALL, CORK, T12 T997



Team Leader: Kevin Cullen  
Project Architects: Aleksandra Czarnicka  
Project Technicians: DJF Engineering Services Ltd.  
Project Supervisor: Deasy Walley Partnership  
Quantity Surveyor: DLF Engineering Services Ltd.  
Civil/Structural Consultant: Matt O'Mahony & Associates  
M & E Consultant: CK Fire Engineering Ltd.  
Landscape Architect:  
Fire Consultant:

Title: HOUSE TYPE H7 GENERAL ARRANGEMENT  
Scale: 1:100 @ A1  
Date: Aug 2025  
Drawn By: KC / QI  
Checked By: KC  
Plotfiles Ref:

Drawing Status	Job No.	Drawing No.	Rev.
Planning	2025.010	PL 04	02

Project: CNWQR PHASE 1D EAST