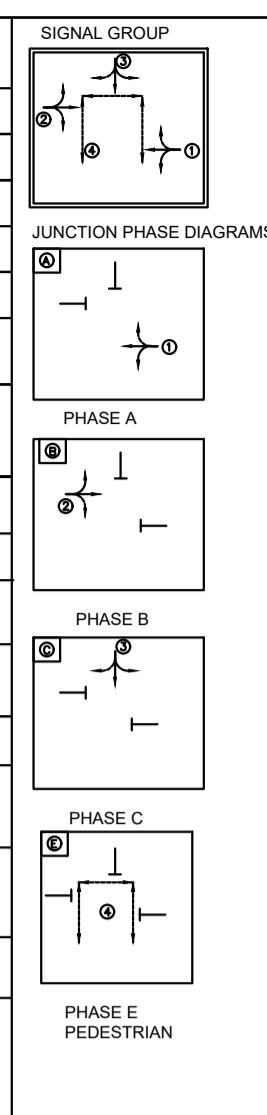
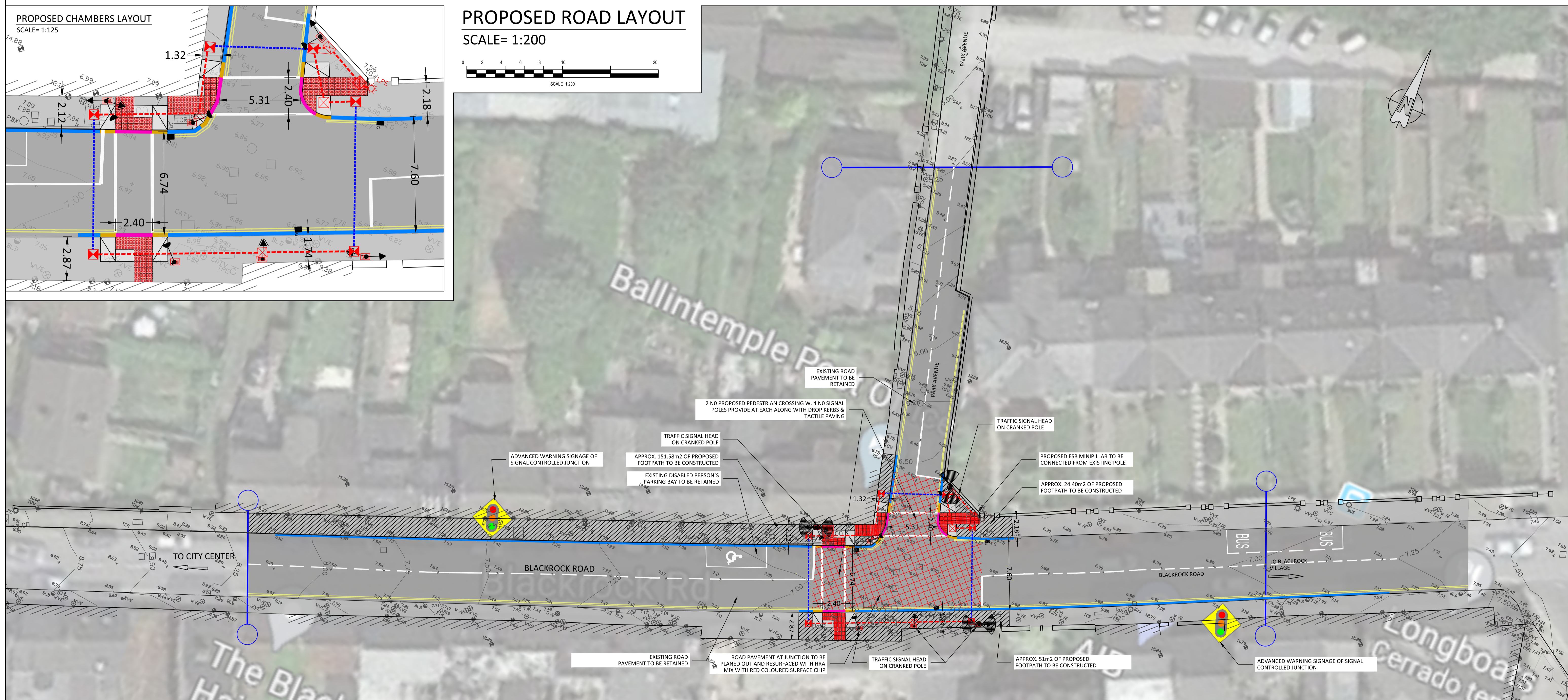
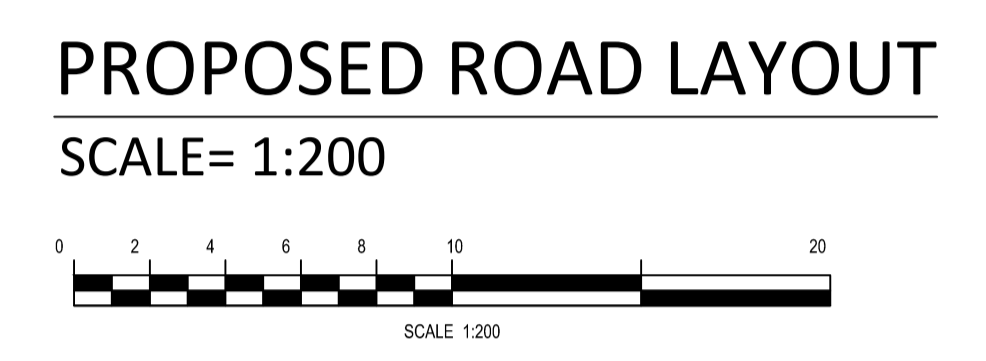
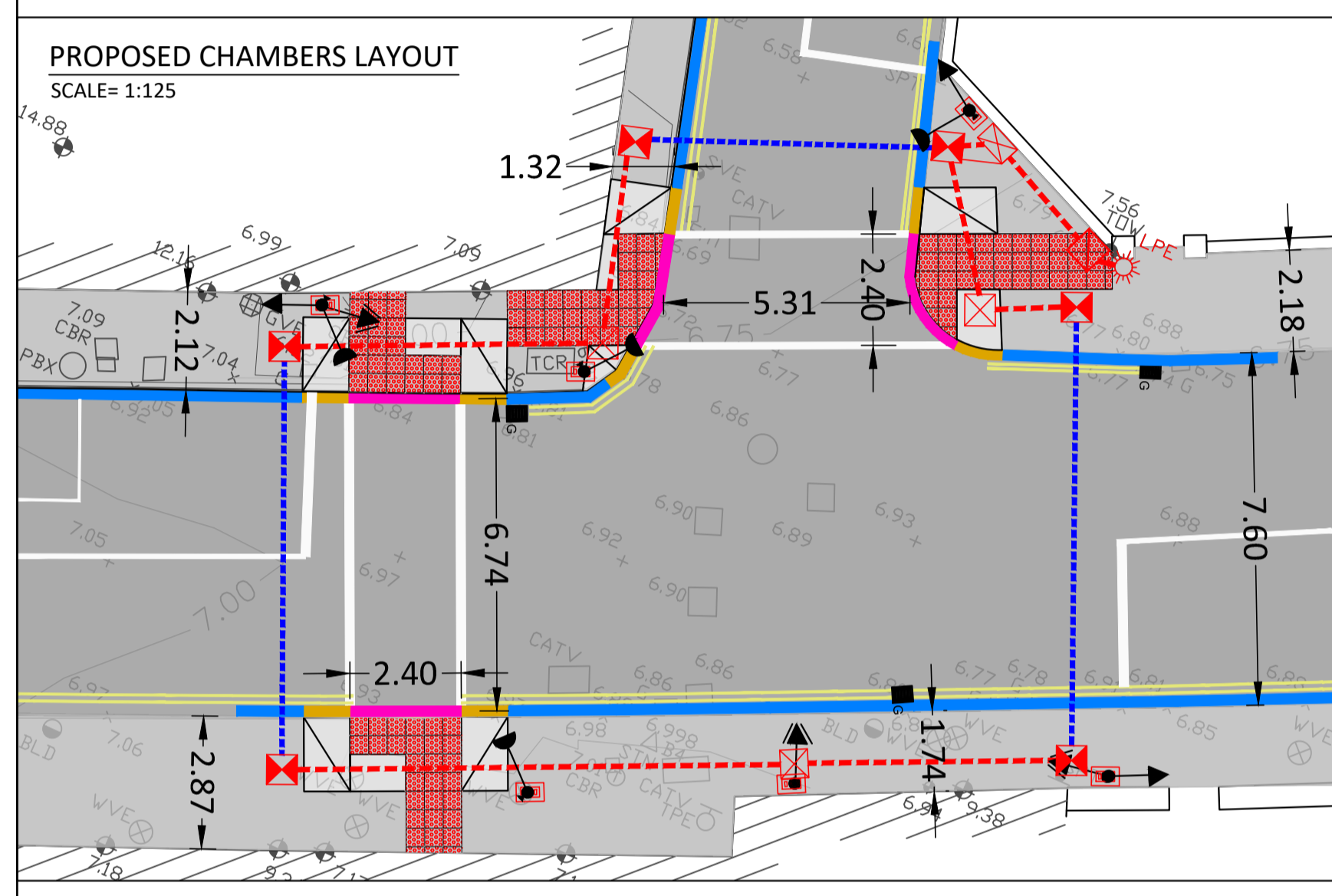
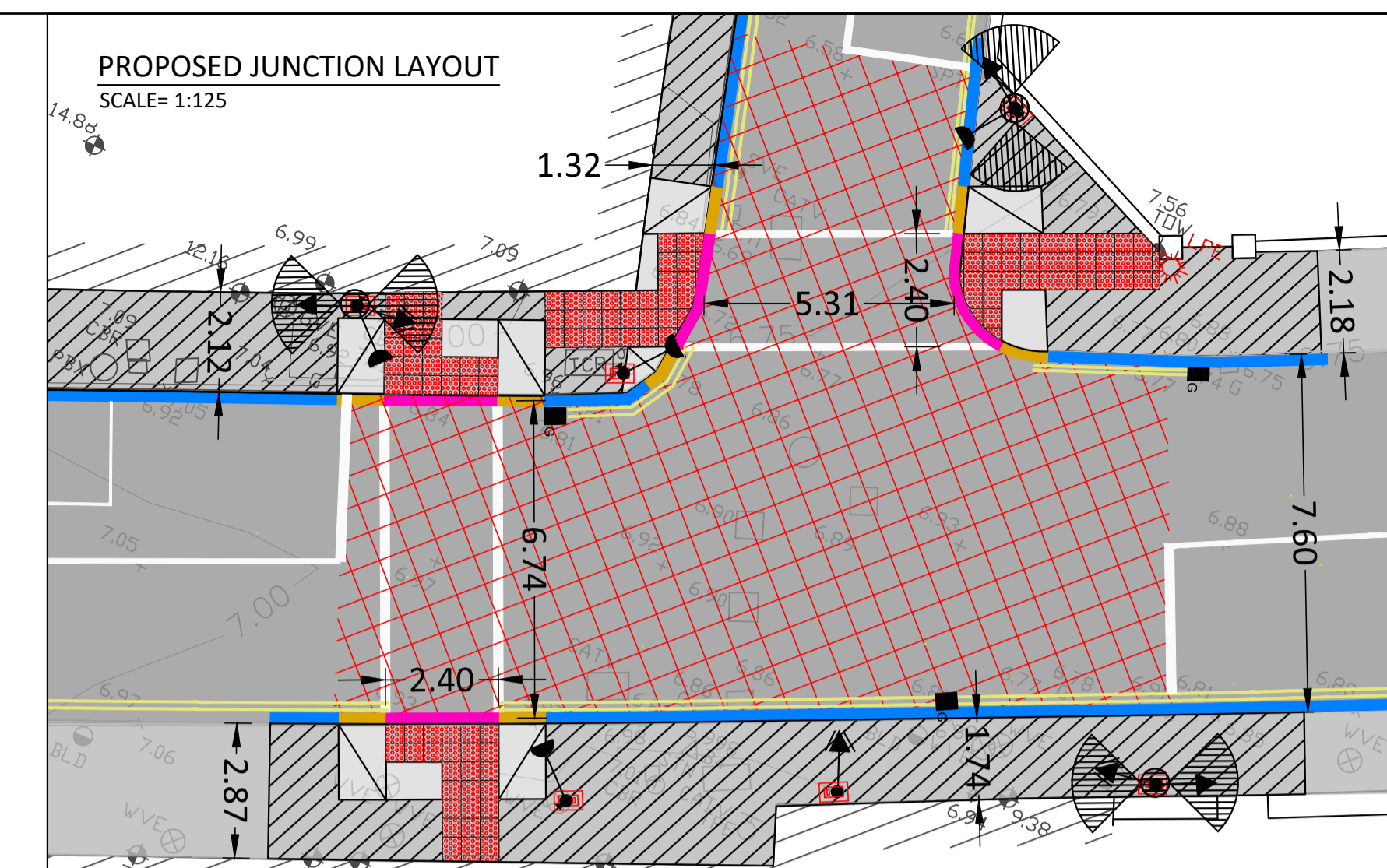
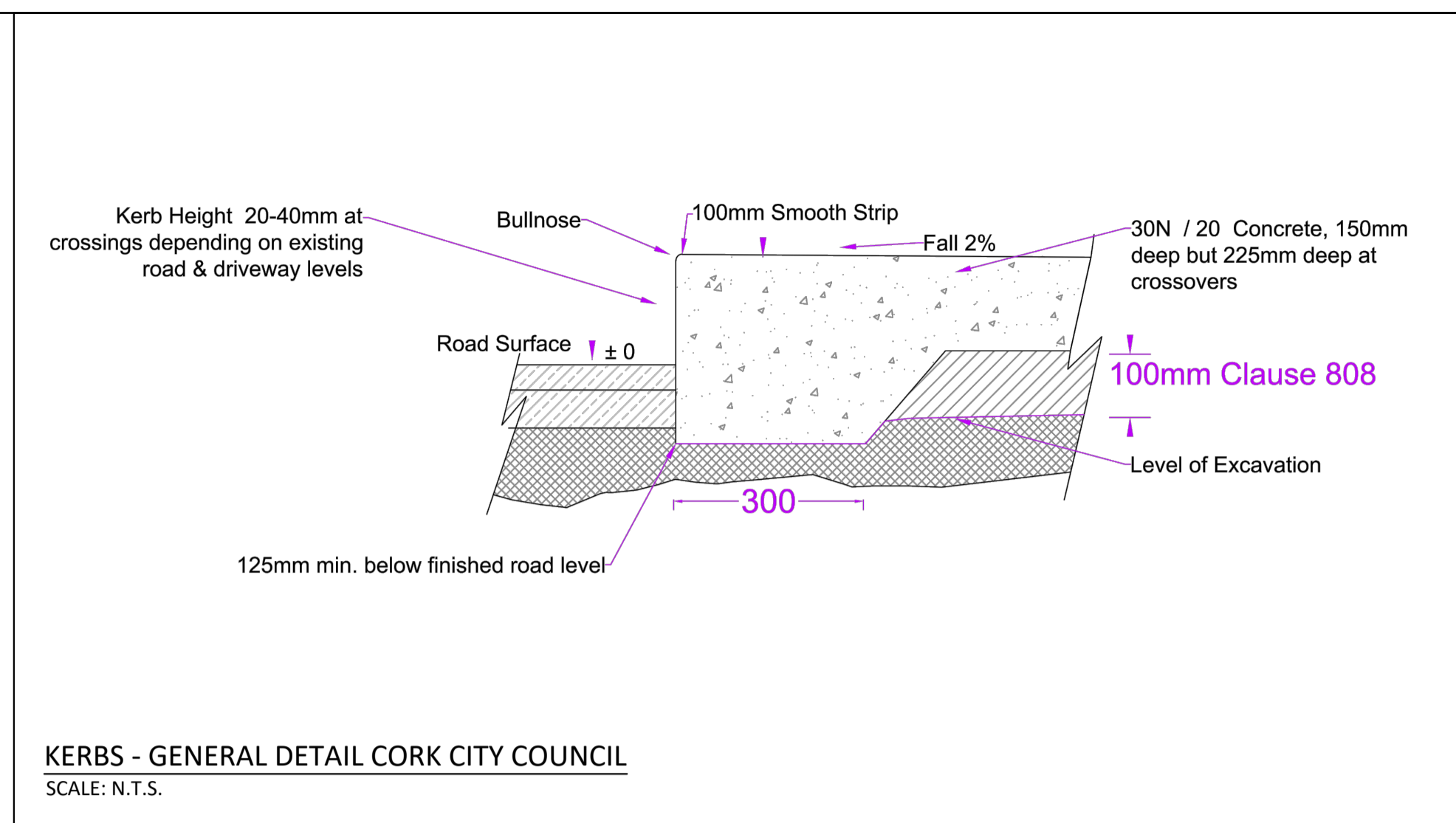


LEGEND	
	SIGNAL POLE
	PRIMARY SIGNAL HEAD
	PRIMARY DOUBLE HEAD HIGH MAST
	SECONDARY SIGNAL HEAD
	PEDESTRIAN ASPECT SIGNAL HEAD
	AGD-318 TRAFFIC CONTROL RADAR OR SIMILAR APPROVED
	CYCLE / PEDESTRIAN DEMAND UNIT WITH SIEMENS HEIMDALL KERBSIDE PEDESTRIAN DETECTOR
	EXISTING LIGHTING POLE TO DO NEW CONEXION TO ESB MINIPILLAR
	PROPOSED ESB MINIPILLAR
	ACCESS CHAMBER TYPE A FOR LONGITUDINAL RUNS
	ACCESS CHAMBER TYPE C FOR ROAD CROSSINGS
	CONTROLLER UNIT MOVA
	SIGNAL DUCTING ORANGE 2 X 110 TRAFFIC LIGHT DUCTING
	SIGNAL DUCTING ORANGE 3 X 110 TRAFFIC LIGHT DUCTING
	TRAFFIC LIGHTING SOCKET



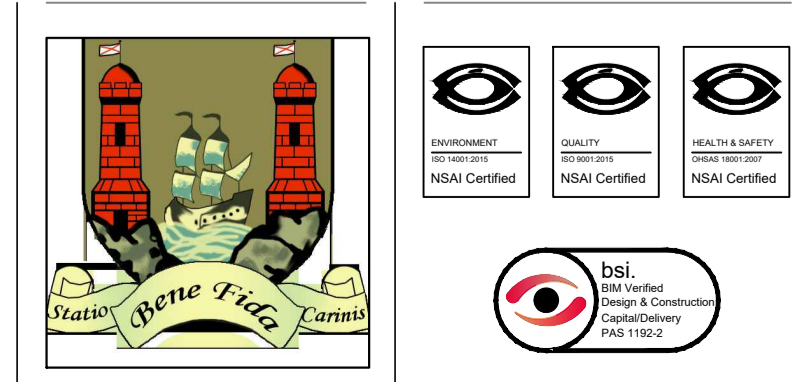
ROAD MARKINGS.	
	STOP LINE TO TSM RRM017
	ROAD CENTRE LINE
	DOUBLE YELLOW LINES
TACTILE PAVING.	
	RED COLOURED TACTILE PAVING ON CONTROLLED PEDESTRIAN CROSSING.
	PROPOSED FOOTPATH
	GULLY
KERBS	
	IN-SITU KERB 125mm REFER TO DRAWING OCSC-Z2-XX-SK-C-0024 FOR KERB DETAIL
	IN-SITU KERB 0-6mm REFER TO DRAWING OCSC-Z2-XX-SK-C-0024 FOR KERB DETAIL
	IN-SITU TRANSITION KERB REFER TO DRAWING OCSC-Z2-XX-SK-C-0024 FOR KERB DETAIL
NOTES	
1- ROAD MARKINGS TO BE IMPLEMENTED AS REQUIRED ON SITE AND ACCORDING TO TSM.	



FOR SETTING OUT REFER TO ARCHITECT'S DRAWINGS.
 THIS DRAWING TO BE READ IN CONJUNCTION WITH ALL OTHER ARCHITECTURAL AND ENGINEERING DRAWINGS AND ALL OTHER RELEVANT DRAWINGS AND SPECIFICATIONS.
 DO NOT SCALE THIS DRAWING. USE FIGURED DIMENSIONS ONLY.
 NO PART OF THIS DOCUMENT MAY BE REPRODUCED OR TRANSMITTED IN ANY FORM OR STORED IN ANY RETRIEVAL SYSTEM OF ANY NATURE WITHOUT THE WRITTEN PERMISSION OF O'CONNOR SUTTON CRONIN AS COPYRIGHT HOLDER EXCEPT AS AGREED FOR USE ON THE PROJECT FOR WHICH THE DOCUMENT WAS ORIGINALLY ISSUED.

Rev No.	Date	Revision Note	Drn by	Chkd by
P01	27.09.19	ISSUE FOR INFORMATION	NG	BH
P02	15.10.19	UPDATE DRAWINGS	NG	BH
P03	02.03.20	TACTILE PAVING ALIGNMENT	JM	BH
P04	13.03.20	UPDATE DRAWINGS	JM	BOR
P05	01.04.20	DRAWING AMENDS	JM	BOR
P06	14.04.20	LOCATION OF ESB MINIPILLAR	JM	BOR

Rev No.	Date	Revision Note	Drn by	Chkd by



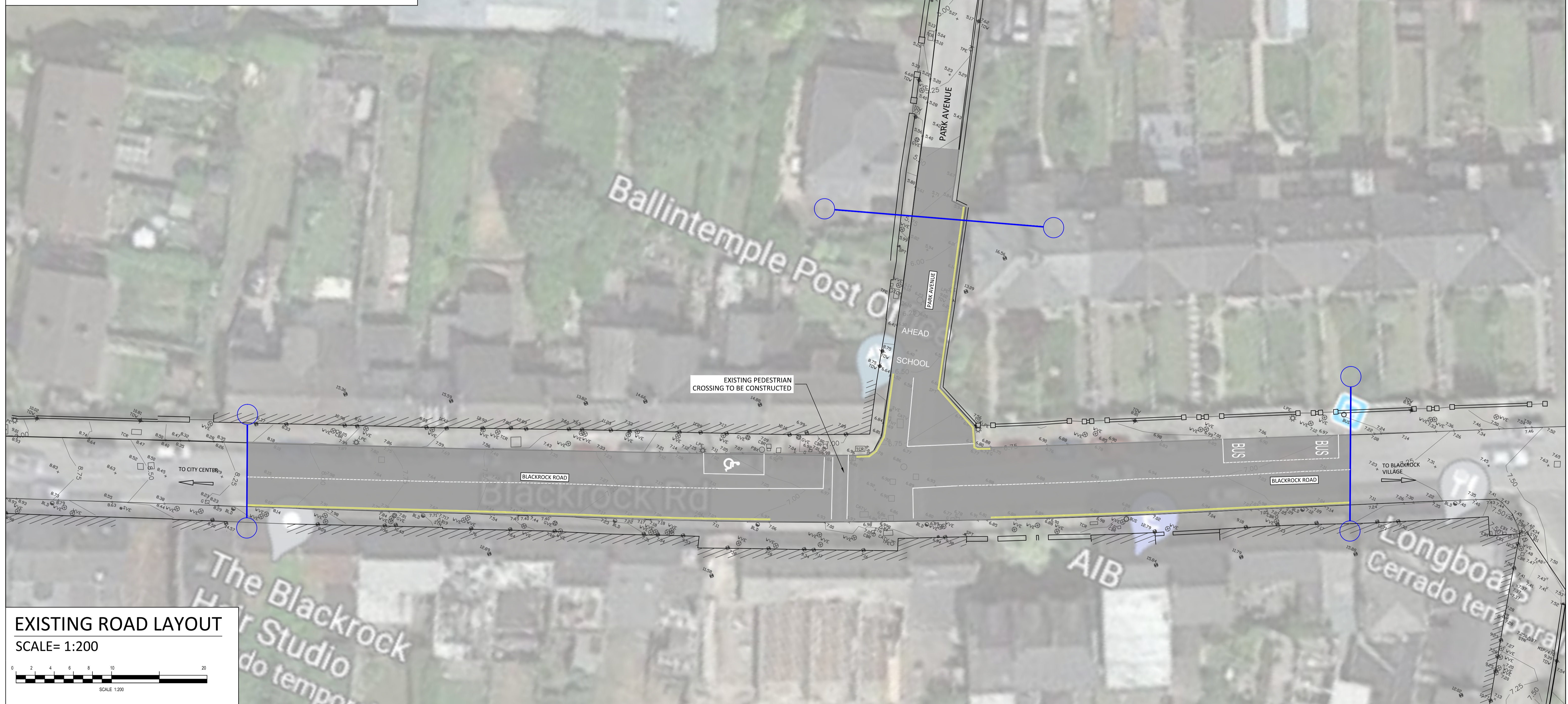
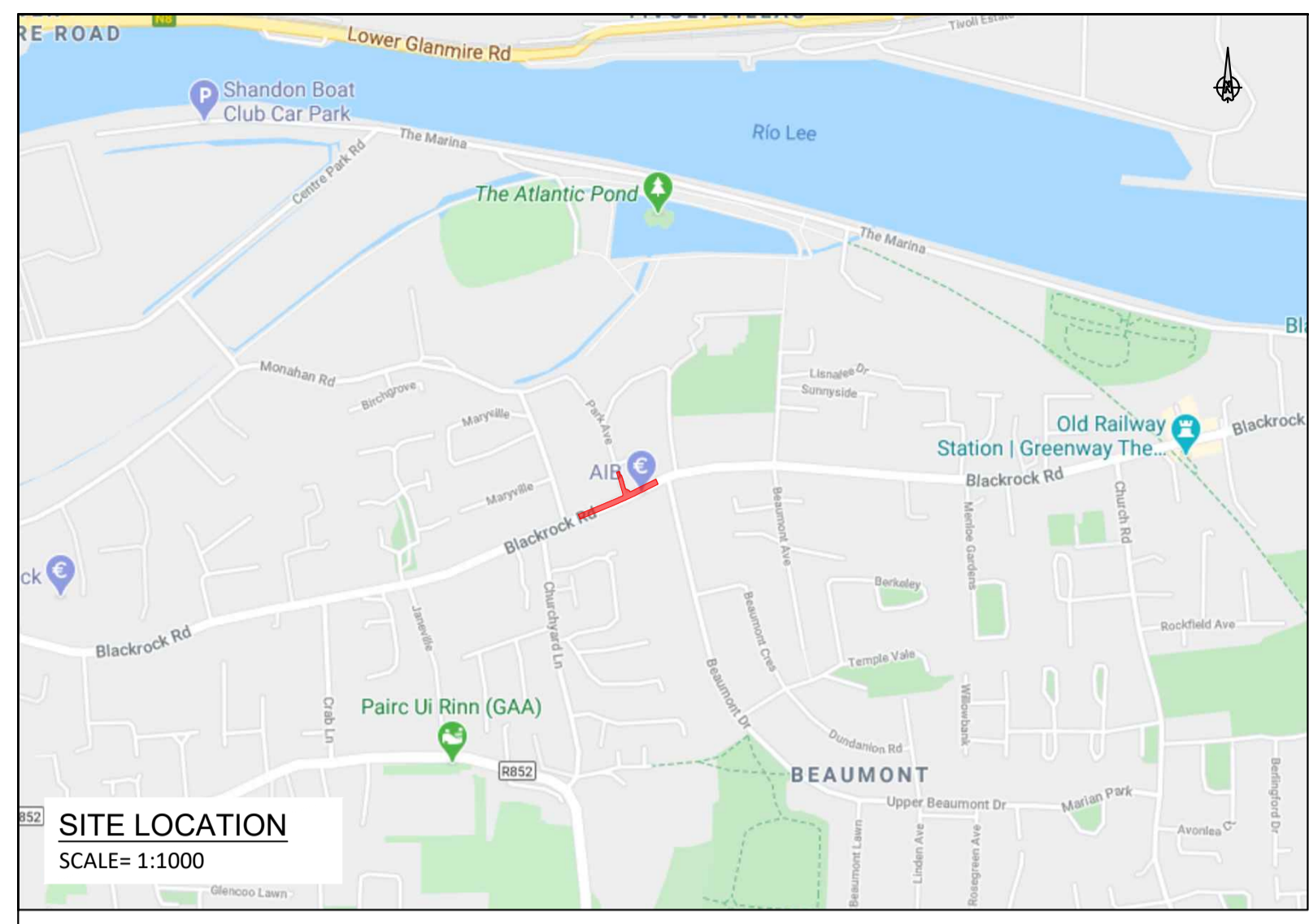
Head Office,
 9 Prussia Street,
 Dublin 7,
 D07 KT57

TEL +353 (0)1 8682000
 e: contactus@ocsc.ie
 w: www.ocsc.ie

Dublin | London | Belfast | Galway | Cork | Birmingham



Client:	CORK CITY COUNCIL
Project:	LOW COST SAFETY SCHEMES BLACKROCK ROAD AND PARK AVENUE
Title:	PROPOSED ROAD LAYOUT, TRAFFIC LIGHTS AND KERBS DETAIL
Code Originator Zone Level Type Role Number Status Revision	C910 - OCSC - XX - XX - DR - C - 0012 SO P06
Date:	15.10.19 Scale: 1:200 @ A1 Drn by: NG Chkd by: BH Aprvd by: BOR



- FOR SETTING OUT REFER TO ARCHITECT'S DRAWINGS.
- THIS DRAWING TO BE READ IN CONJUNCTION WITH ALL OTHER ARCHITECTURAL AND ENGINEERING DRAWINGS AND ALL OTHER RELEVANT DRAWINGS AND SPECIFICATIONS.
- DO NOT SCALE THIS DRAWING. USE FIGURED DIMENSIONS ONLY.
- NO PART OF THIS DOCUMENT MAY BE REPRODUCED OR TRANSMITTED IN ANY FORM OR STORED IN ANY RETRIEVAL SYSTEM OF ANY NATURE WITHOUT THE WRITTEN PERMISSION OF O'CONNOR SUTTON CRONIN AS COPYRIGHT HOLDER EXCEPT AS AGREED FOR USE ON THE PROJECT FOR WHICH THE DOCUMENT WAS ORIGINALLY ISSUED.

Rev No.	Date	Revision Note	Drn by	Chkd by
P01	27.09.19	ISSUE FOR INFORMATION	NG	BH
P02	15.10.19	UPDATE DRAWINGS	NG	BH
P03	02.03.20	TACTILE PAVING ALIGNMENT	JM	BH
P04	13.03.20	UPDATE DRAWINGS	JM	BOR
P05	01.04.20	DRAWING AMENDS	JM	BOR

Rev No.	Date	Revision Note	Drn by	Chkd by



Head Office,
9 Prussia Street,
Dublin 7,
D07 KT57

TEL +353 (0)1 8682000

e: contactus@ocsc.ie
w: www.ocsc.ie

Dublin | London | Belfast | Galway | Cork | Birmingham



Client: CORK CITY COUNCIL
Project: LOW COST SAFETY SCHEMES
BLACKROCK ROAD AND PARK AVENUE
Title: EXISTING ROAD LAYOUT

Code	Originator	Zone	Level	Type	Role	Number	Status	Revision
C910	OCSC	XX	XX	DR	C	0011	SO	P05

Date: 15.10.19 Scale: 1:200 @ A1 Drn by: NG Chkd by: BH Aprvd by: BOR

CORK CITY COUNCIL



LOW COST SAFETY SCHEMES BLACKROCK ROAD AND PARK AVENUE

Drawing Schedule

Drawing No.	Drawing Title	Rev.	Scale	Size
C910-OCSC-Z2-XX-SK-C-0011	EXISTING ROAD LAYOUT	P05	1:200	A1
C910-OCSC-Z2-XX-SK-C-0012	PROPOSED ROAD LAYOUT, TRAFFICS LIGHTS AND KERBS DETAIL	P06	1:200	A1

Part 8 Planning

APRIL 2020