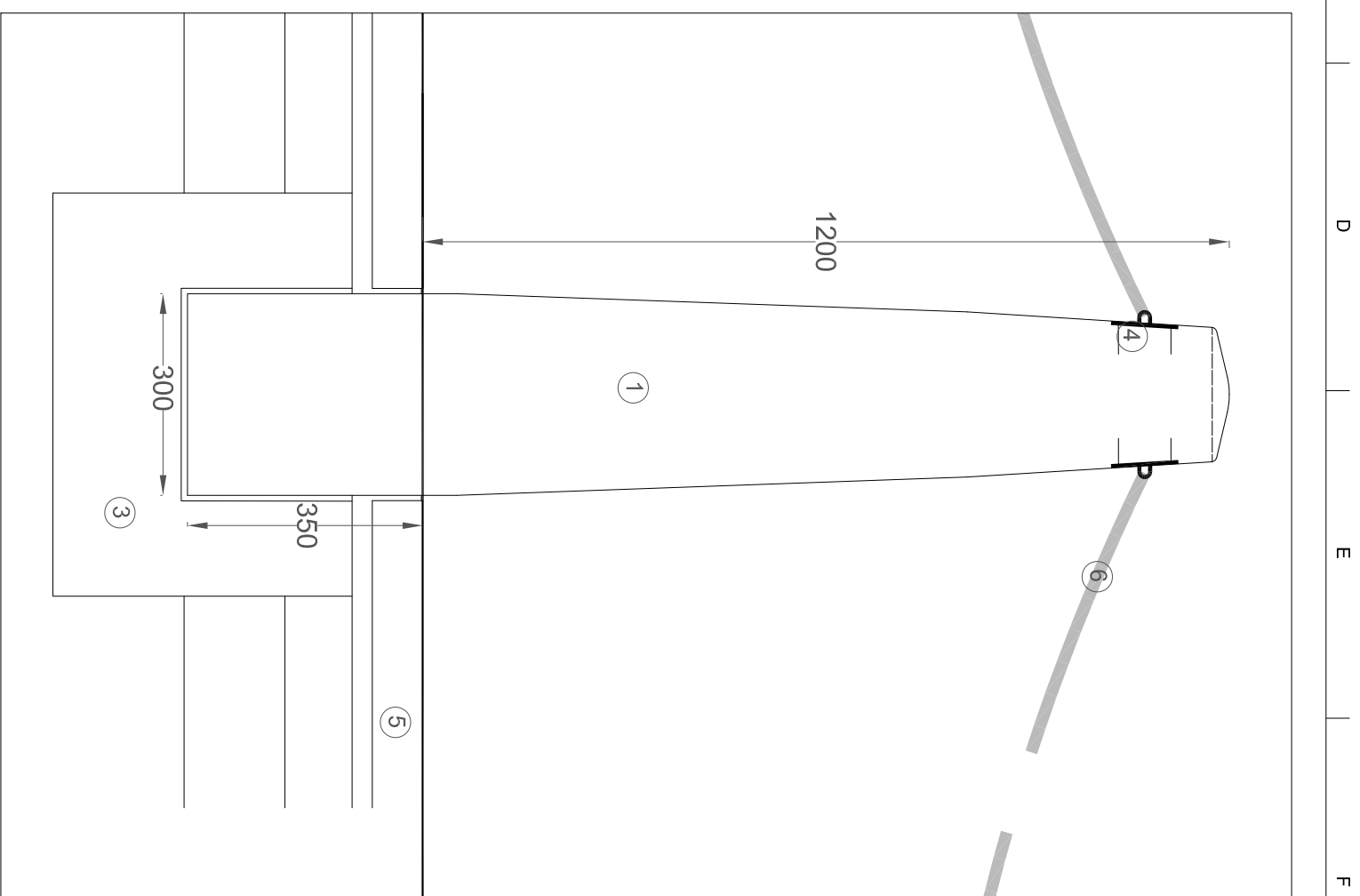


Side Elevation



Front Elevation (Facing Square)

1. 1200mm high flame textured 'Granite' (G654: Roriz) stone bollard inserted in pocket in foundation filled with non shrink grout.
2. Image Engraved in Stone (tbc)
3. Foundation to Engineers detail
4. 100mm x 100mm x 5mm galvanized steel plate with fixing eye recessed into granite, fixed with 4No. resin anchors.
5. Paving slab (refer to paving details and landscape layouts)
6. Detachable heavy duty 18mm gauge galvanized mild steel long link chain.

Notes:  
All layout drawings to be read in conjunction with details.

Rev	Date	By	Chkd	Appd
P01	12/02/18	DM	AM	AH

Planning Issue

**ARUP**  
One Albert Quay  
Cork, Ireland  
Tel +353 (0)21 427 7670 Fax +353 (0)21 427 2345  
www.arup.com

the paulhogarth company

Project Title  
**Morrison's Island Public Realm  
and Flood Defence Project**

Client  
**Cork City Council  
City Hall  
Anglesea street  
Cork**



Drawing Title  
**Stone Bollard Typical Details**

Scale at A3  
1:10

Role  
Civil Infrastructure

Subsidiary  
Part 8 Planning

Arup Job No  
230436-00

Name  
MOR-5004

Rev  
P01