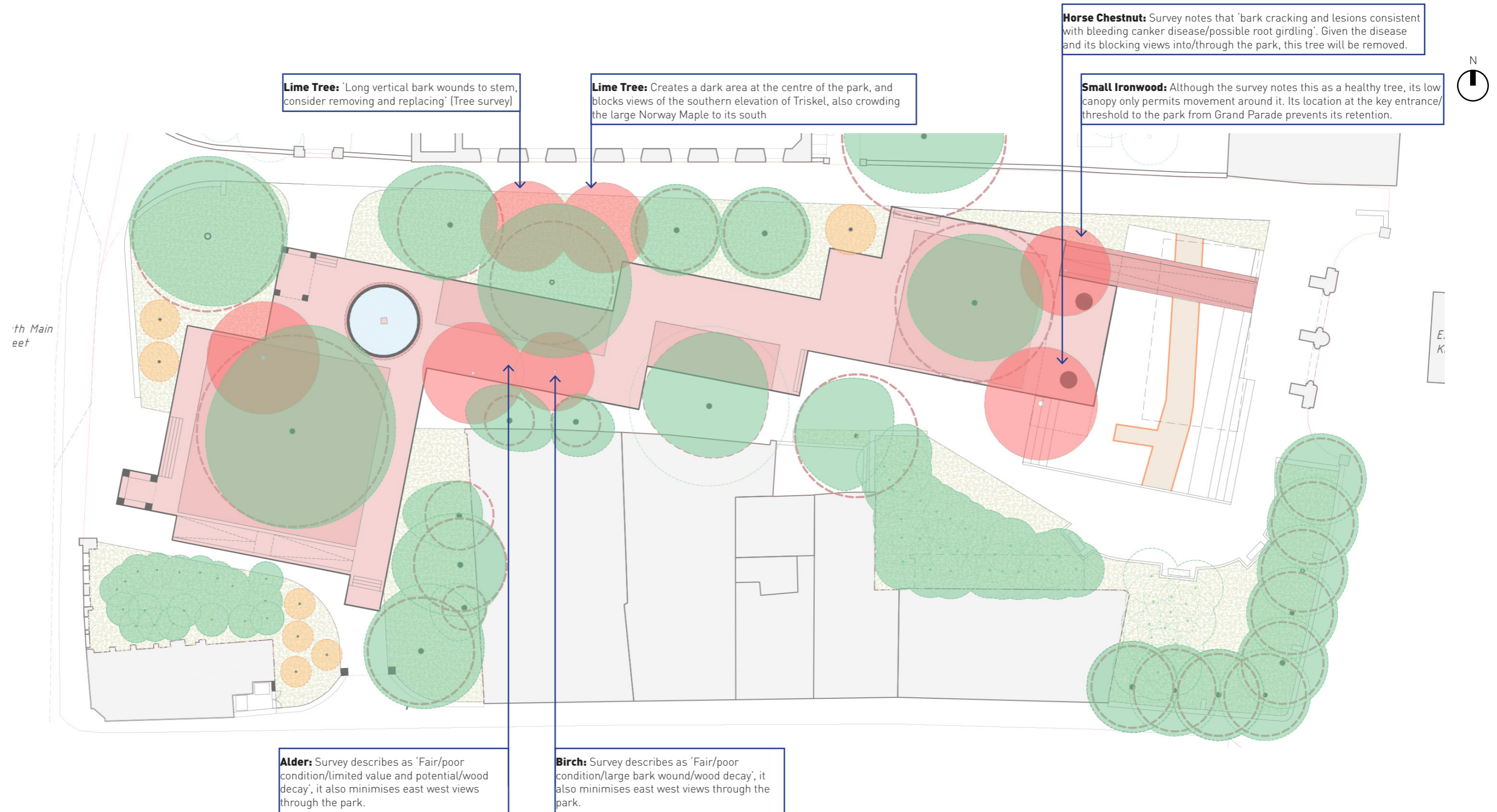


## 2.0 PROPOSALS

### 2.1 TREE REMOVAL



## 2.0 PROPOSALS

### 2.2 TREE ADDITIONS

#### Strategy

We've proposed additional trees in a number of areas throughout the park. The number of additional trees matches the number of trees being proposed for removal. Please refer to BSM's accompanying reports and drawings describing the species and character of the proposed trees. When adding trees back into the park we have considered the following criteria:

- Reducing overshadowing
- Maximising sightlines through the park
- Marking key thresholds
- Providing shelter/shade
- Providing species which have minimal leaf shedding and therefore reduce the burden on leaf clearance/blocking of drainage/minimise the risk of slips.
- Tolerance of urban site conditions and 'fitness' for site, with trees capable of withstanding the constraints of the site, such as: planting pit, available space, micro-climate and durability in the public realm.

#### Overview

We've summarised below the numbers relating to the retention, removal and addition of trees within Bishop Lucey Park as a consequence of our proposals.

#### Trees (not incl. birch trees)

- Number of retained trees: 25
- Number of removed trees: 7
- Number of trees added: 7

#### Birch trees

- Area 01: We're proposing to retain the entirety of the birch grove facing Grand Parade (to the eastern gable of the Mason's Hall)
- Area 02: We're proposing to retain the entirety of the birch grove located to the rear of The Oval pub on South Main Street
- Area 03: We're proposing to retain the entirety of the The Chernobyl Dedication Grove trees to the rear of the Masonic Hall on Tuckey Street.



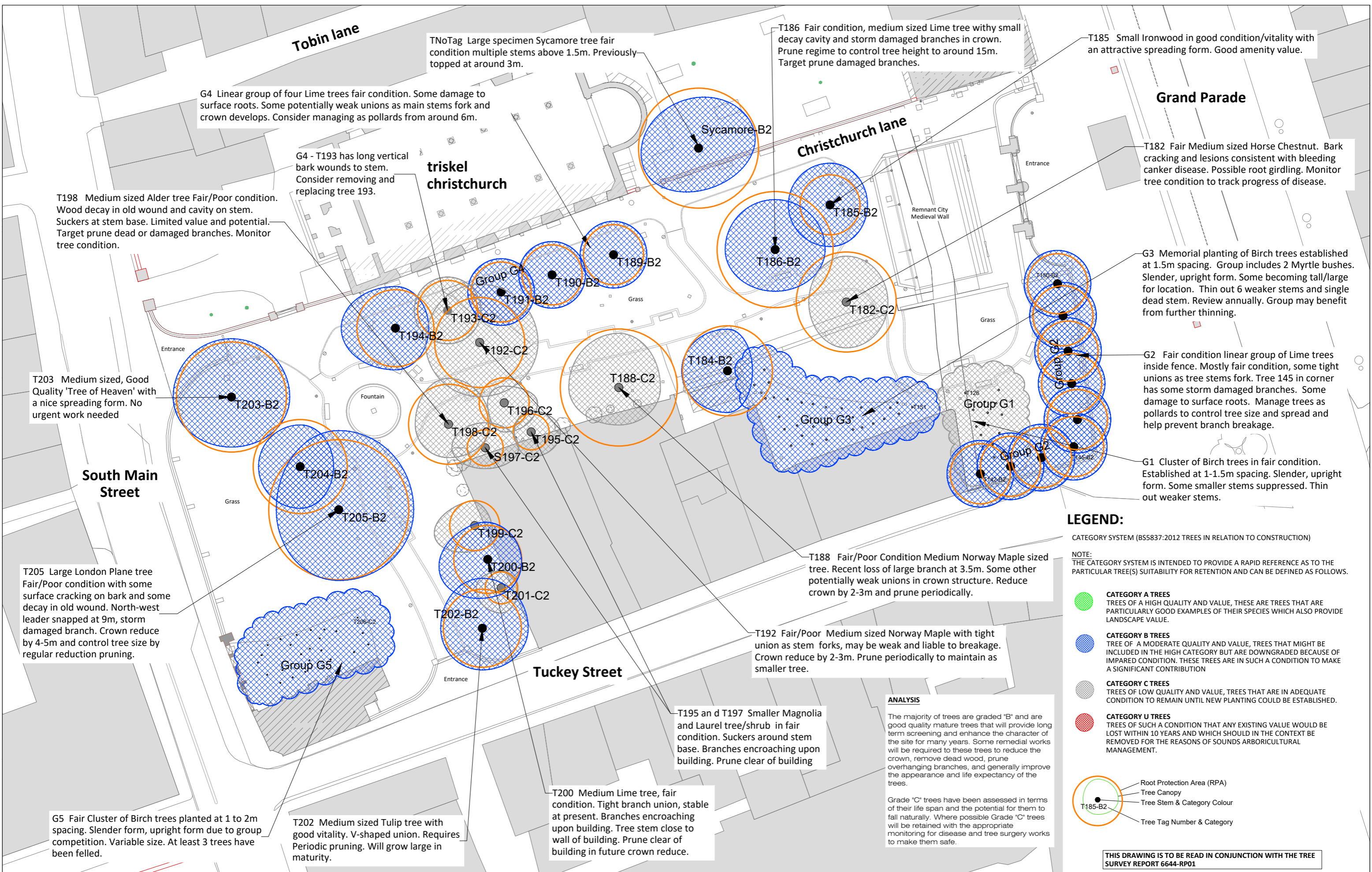


Looking westwards into the park from Grand Parade

# *Appendix*

## *Tree Survey Documents*

NB. Please refer to Brady Shipman Martin's accompanying drawings and reports for the full suite of tree survey information



G4 Linear group of four Lime trees fair condition. Some damage to surface roots. Some potentially weak unions as main stems fork and crown develops. Consider managing as pollards from around 6m.

G4 - T193 has long vertical bark wounds to stem. Consider removing and replacing tree 193.

T198 Medium sized Alder tree Fair/Poor condition. Wood decay in old wound and cavity on stem. Suckers at stem base. Limited value and potential. Target prune dead or damaged branches. Monitor tree condition.

TNoTag Large specimen Sycamore tree fair condition multiple stems above 1.5m. Previously topped at around 3m.

T186 Fair condition, medium sized Lime tree with small decay cavity and storm damaged branches in crown. Prune regime to control tree height to around 15m. Target prune damaged branches.

T185 Small Ironwood in good condition/vitality with an attractive spreading form. Good amenity value.

**Grand Parade**

T182 Fair Medium sized Horse Chestnut. Bark cracking and lesions consistent with bleeding canker disease. Possible root girdling. Monitor tree condition to track progress of disease.

G3 Memorial planting of Birch trees established at 1.5m spacing. Group includes 2 Myrtle bushes. Slender, upright form. Some becoming tall/large for location. Thin out 6 weaker stems and single dead stem. Review annually. Group may benefit from further thinning.

G2 Fair condition linear group of Lime trees inside fence. Mostly fair condition, some tight unions as tree stems fork. Tree 145 in corner has some storm damaged branches. Some damage to surface roots. Manage trees as pollards to control tree size and spread and help prevent branch breakage.

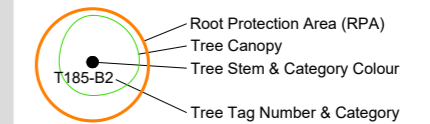
G1 Cluster of Birch trees in fair condition. Established at 1-1.5m spacing. Slender, upright form. Some smaller stems suppressed. Thin out weaker stems.

**LEGEND:**

CATEGORY SYSTEM (BS5837:2012 TREES IN RELATION TO CONSTRUCTION)

NOTE: THE CATEGORY SYSTEM IS INTENDED TO PROVIDE A RAPID REFERENCE AS TO THE PARTICULAR TREE(S) SUITABILITY FOR RETENTION AND CAN BE DEFINED AS FOLLOWS.

- **CATEGORY A TREES**  
TREES OF A HIGH QUALITY AND VALUE, THESE ARE TREES THAT ARE PARTICULARLY GOOD EXAMPLES OF THEIR SPECIES WHICH ALSO PROVIDE LANDSCAPE VALUE.
- **CATEGORY B TREES**  
TREE OF A MODERATE QUALITY AND VALUE, TREES THAT MIGHT BE INCLUDED IN THE HIGH CATEGORY BUT ARE DOWNGRADED BECAUSE OF IMPAIRED CONDITION. THESE TREES ARE IN SUCH A CONDITION TO MAKE A SIGNIFICANT CONTRIBUTION
- **CATEGORY C TREES**  
TREES OF LOW QUALITY AND VALUE, TREES THAT ARE IN ADEQUATE CONDITION TO REMAIN UNTIL NEW PLANTING COULD BE ESTABLISHED.
- **CATEGORY U TREES**  
TREES OF SUCH A CONDITION THAT ANY EXISTING VALUE WOULD BE LOST WITHIN 10 YEARS AND WHICH SHOULD IN THE CONTEXT BE REMOVED FOR THE REASONS OF SOUND ARBORICULTURAL MANAGEMENT.



**ANALYSIS**

The majority of trees are graded "B" and are good quality mature trees that will provide long term screening and enhance the character of the site for many years. Some remedial works will be required to these trees to reduce the crown, remove dead wood, prune overhanging branches, and generally improve the appearance and life expectancy of the trees.

Grade "C" trees have been assessed in terms of their life span and the potential for them to fall naturally. Where possible Grade "C" trees will be retained with the appropriate monitoring for disease and tree surgery works to make them safe.

T195 an d T197 Smaller Magnolia and Laurel tree/shrub in fair condition. Suckers around stem base. Branches encroaching upon building. Prune clear of building

T200 Medium Lime tree, fair condition. Tight branch union, stable at present. Branches encroaching upon building. Tree stem close to wall of building. Prune clear of building in future crown reduce.

T202 Medium sized Tulip tree with good vitality. V-shaped union. Requires Periodic pruning. Will grow large in maturity.

G5 Fair Cluster of Birch trees planted at 1 to 2m spacing. Slender form, upright form due to group competition. Variable size. At least 3 trees have been felled.

THIS DRAWING IS TO BE READ IN CONJUNCTION WITH THE TREE SURVEY REPORT 6644-RP01

HALL McKNIGHT