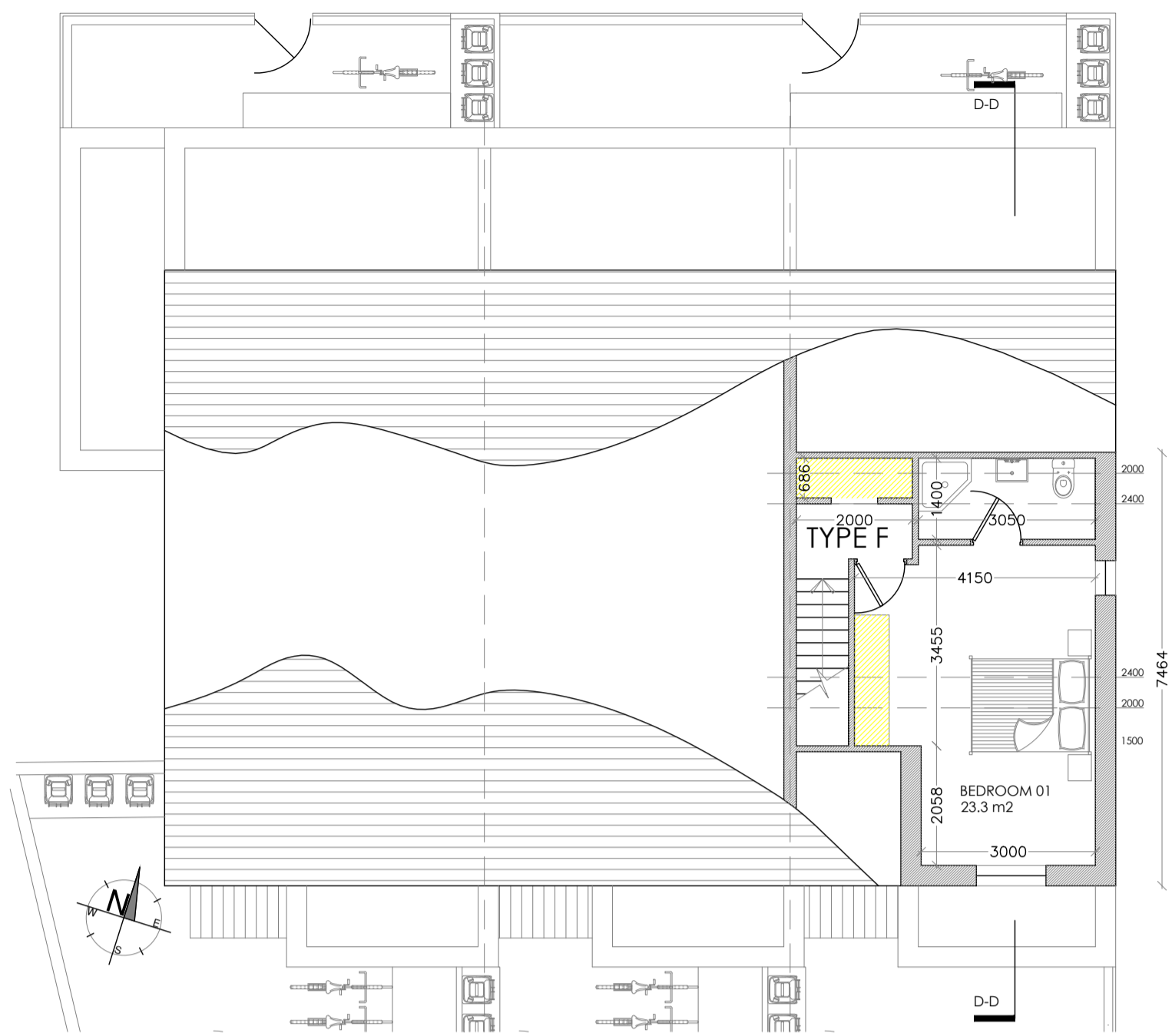


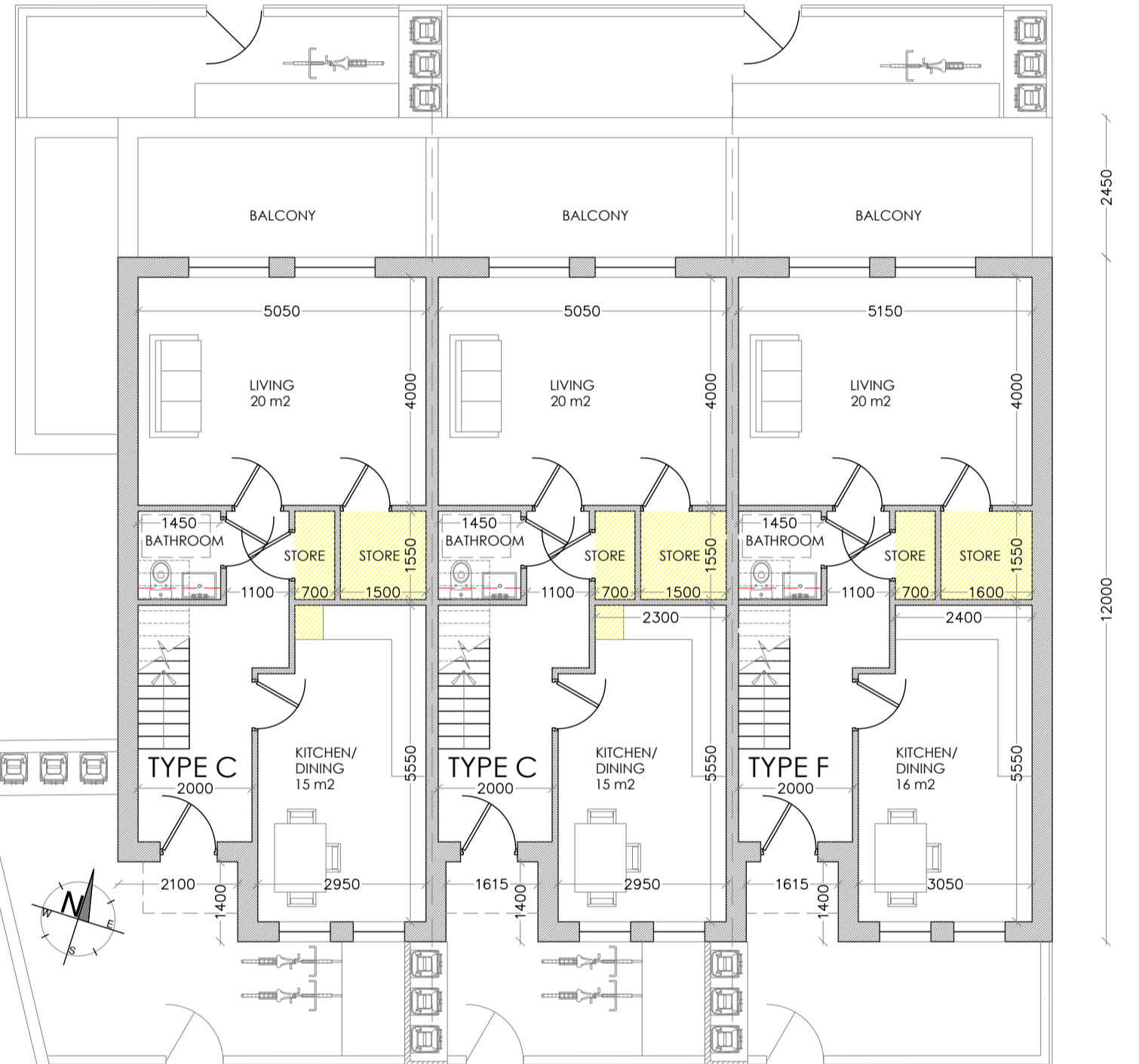
Proposed Lower Ground Floor Plan - Block D
SCALE 1:100 @ A1



Proposed Second Floor Plan - Block D
SCALE 1:100 @ A1



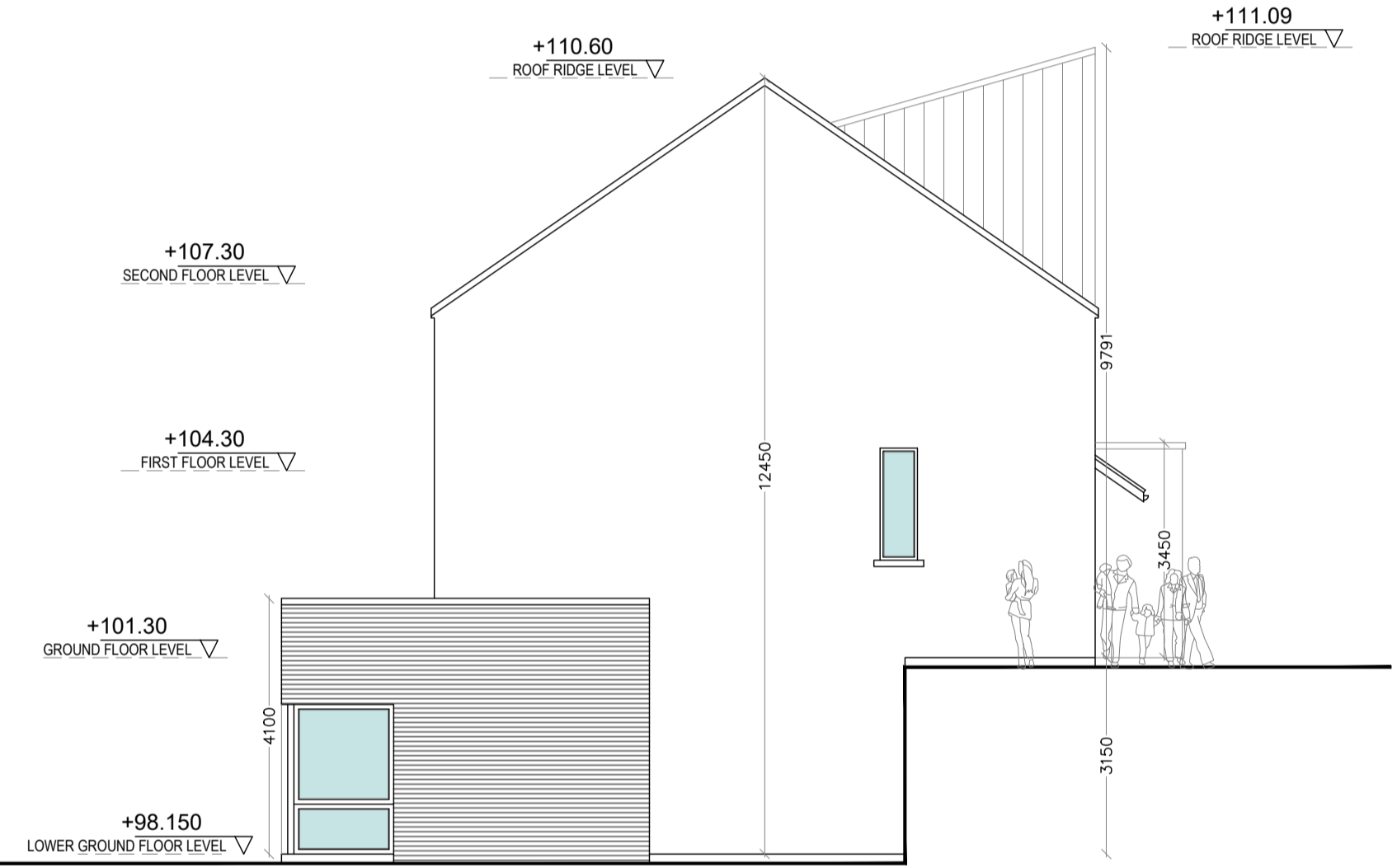
Proposed South Elevation - Block D
SCALE 1:100 @ A1



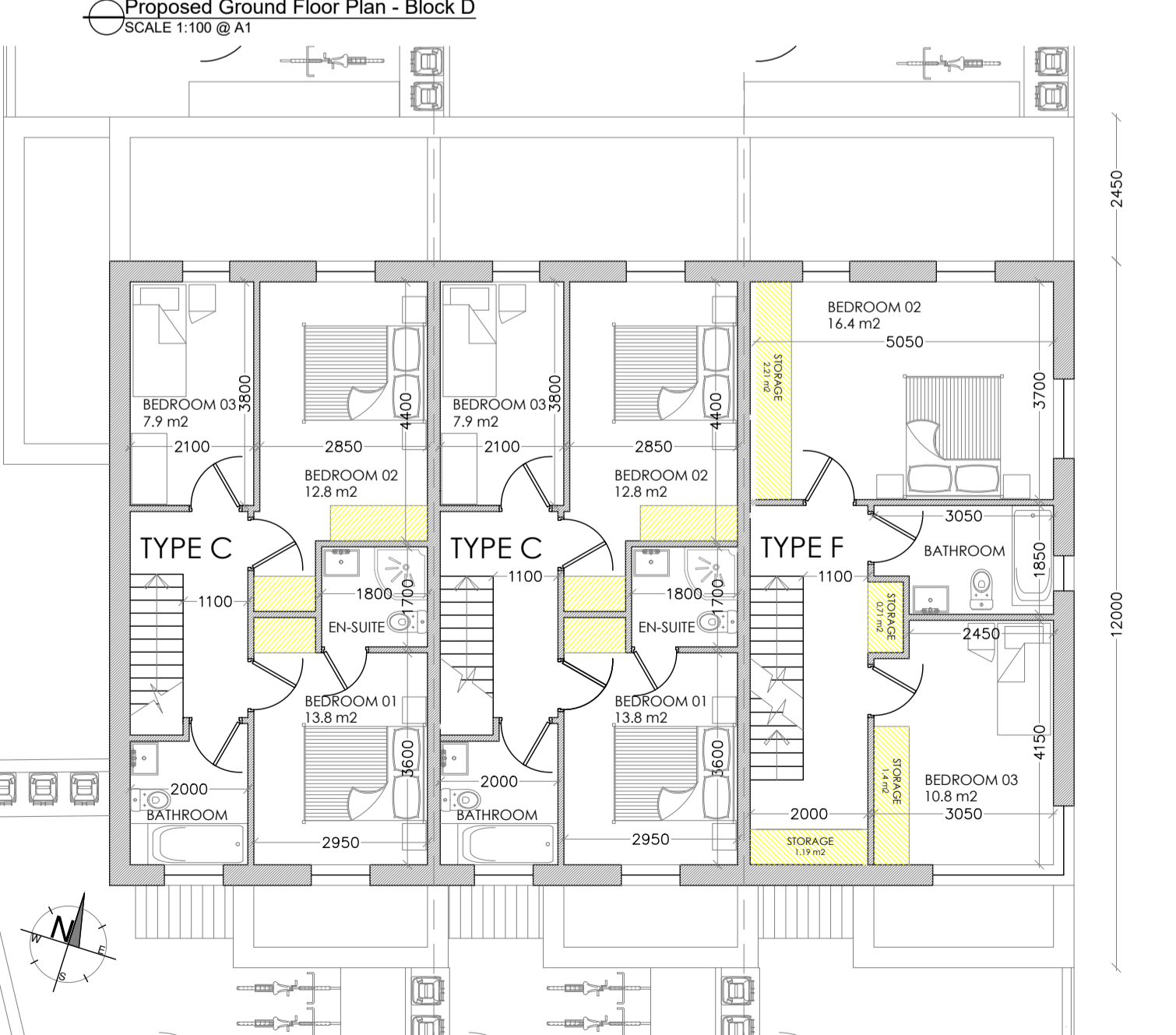
Proposed Ground Floor Plan - Block D
SCALE 1:100 @ A1



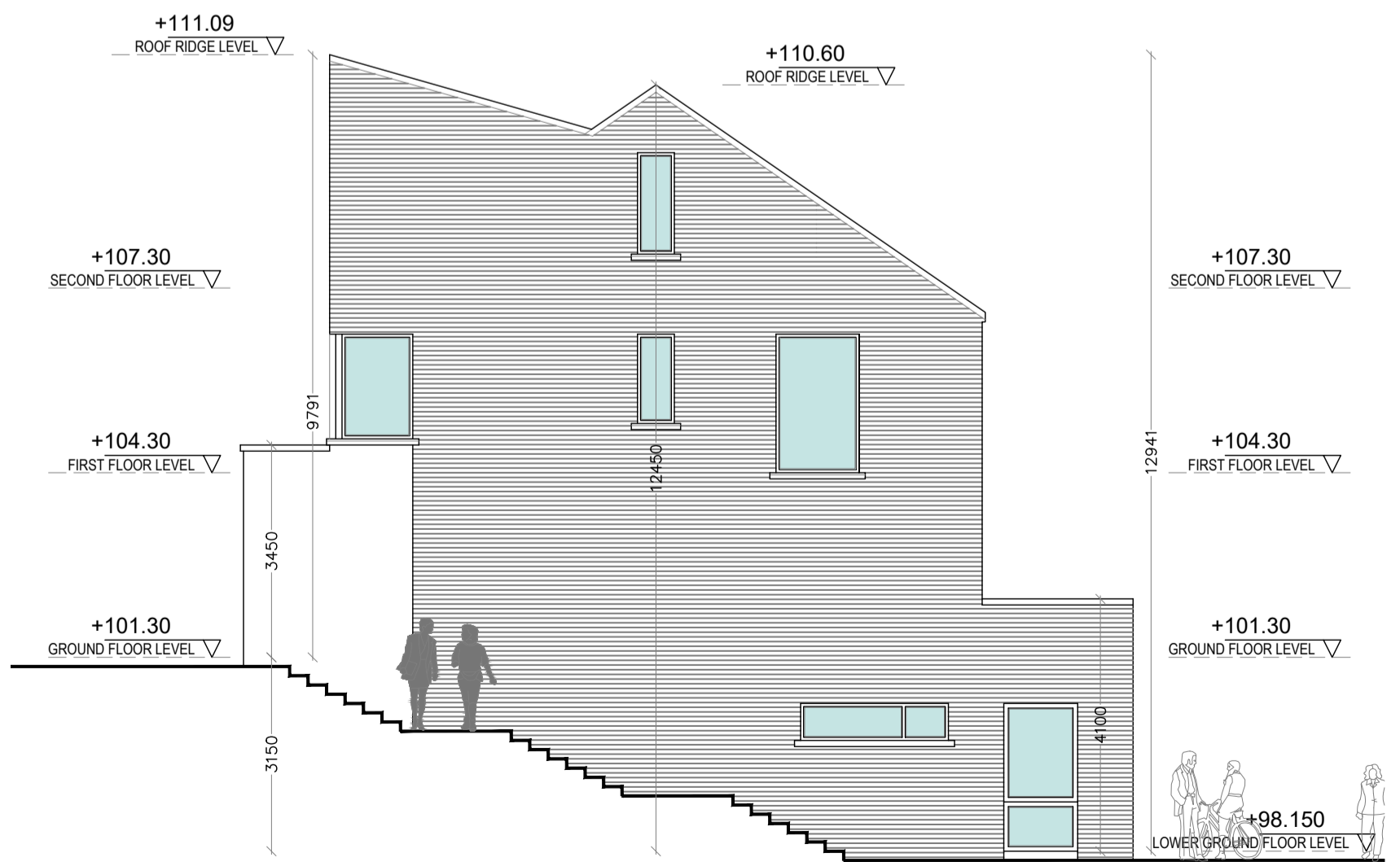
Proposed South Elevation - Block D
SCALE 1:100 @ A1



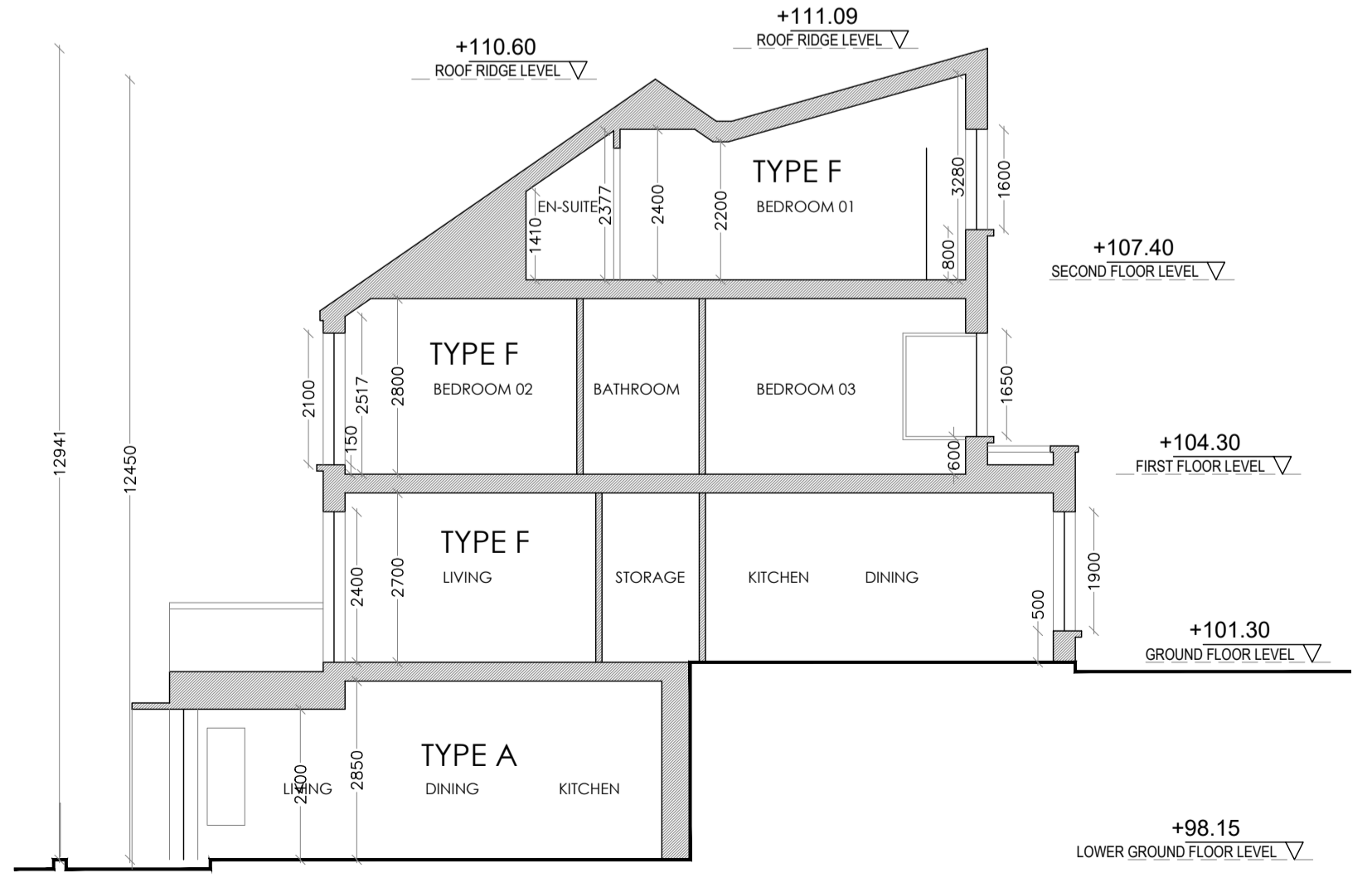
Proposed East Elevation - Block D
SCALE 1:100 @ A1



Proposed First Floor Plan - Block D
SCALE 1:100 @ A1



Proposed East Elevation - Block D
SCALE 1:100 @ A1



Proposed Section A-A - Block D
SCALE 1:100 @ A1

- EXTERNAL WALL FINISH: WET DASH, COLOURED PLASTER WITH RAISED SMOOTH PLASTER BANDING TO DOORS AND WINDOWS AS SHOWN.
- PITCHED ROOFING: SELECTED THURLONE SLATE OR SIMILAR APPROVED TO PITCHED ROOF'S WHERE SHOWN.
- FASCIA & SOFFIT: REFER TO THE ATTACHED ARCHITECTS DETAIL REPRESENTING A BASED PLASTERED FACIA AND BARGE BOARDS. INCLUDE FOR FIXING THE GREY RAINWATER GUTTER TO THE RAFTER. INCLUDE FOR OVER LEAVES VENTILATION IN ACCORDANCE WITH THE ATTACHED DETAIL. INCLUDE FOR SELECTED GREY HALF ROUND AND ROUND, RAINWATER GOODS AND DOWNPIPES.
- ROOF BARGE: INCLUDE FOR A SELECTED TEGAL OR SIMILAR APPROVED EDGE OF SLATE TRIM IN ACCORDANCE WITH THE ARCHITECTS DETAIL. INCLUDE FOR ADDON OF MOY DOTEK INSULATION BETWEEN AND ACROSS CEILING RAFTERS. REFER TO THE ARCHITECTS DETAILS.
- WINDOWS & DOORS: INCLUDE FOR SELECTED COLOUR (REFER TO THE DESIGN STATEMENT) WINDOWS AND DOORS. WINDOWS TO BE DOUBLE AND TRIPLE GLAZED, ENERGY ASSESSMENT UNIT DEPENDENT. WINDOWS FRAMES TO INCLUDE FOR NATURAL VENTILATION OUTLETS IN A COLOUR TO MATCH THE WINDOW FRAME.
- INCLUDE FOR GALVANISED STEEL LOUVERED COVERS ON A SMOOTH PLASTER BACKGROUND TO ALL MECHANICAL VENTILATION OPENINGS.
- RAISED SEAM ROOF: INCLUDE FOR SELECTED RAISED SEAM CLADDING TO THE ROOF AND RETURN WALLS OF THE MONO PITCH ROOF OVER TOWNHOUSES 1 & 2. RAISED SEAM TO BE CONSTRUCTED ON VAPOUR BARRIER, ON PLYWOOD ON TREATED DEAL BATTEN ON BREATHABLE FELT ON PLYWOOD ON TIMBER RAFTERS. SPACE TO BEAK OF EXTERNAL PLYWOOD TO BE VENTILATED.
- BALCONY / FLAT ROOF: INCLUDE FOR SELECTED PAVING ON SPACER BASES ON ALKOR OR SIMILAR APPROVED SINGLE PLY MEMBRANE TO THE FLAT ROOF OVER THE GROUND FLOOR POP-OUT. INCLUDE FOR EXTENDING THE MEMBRANE UP THE INSIDE OF THE SIDE PARAPET WALLS BY 200MM. INCLUDE FOR A TANKING MEMBRANE TRAY ACROSS THE CAVITY PARAPET WALL AND FLASHING SAME OVER THE ROOFING MEMBRANE UPSTAND. INCLUDE FOR DRESSING THE ROOFING MEMBRANE ACROSS THE EXTERNAL WALL FOR FITTING AND SAVING GUTTER AND FOR WEATHERING IN ACCORDANCE WITH THE ARCHITECTS DETAIL.
INCLUDE FOR THE ROOFING MEMBRANE ON VAPOUR BARRIER ON PLYWOOD ON 100MM G2 SELECTED INSULATION ON SKEED TO FALLS AWAY FROM THE TWO STOREY BUILDING) ON 200MM PRE-CAST CONCRETE STAB TO THE ENGINEERS DETAIL & SPECIFICATION. INCLUDE FOR AN AIRTIGHTNESS MEMBRANE TO THE UNDERSIDE OF THE SLAB AND FOR FIXING A 12.5MM PLASTER SLAB ON TIMBER BATTEN TO THE UNDERSIDE.
PROVIDE FOR GALVANISED STEEL BALUSTRADE/ RAILING TO ARCHITECTS DETAIL 1500MM HIGH EXTENDING FROM PARTY WALL TO PARTY WALL. INCLUDE FOR FACE FACING THE BALUSTRADE TO THE EXTERNAL BRICKWORK AS PER THE ARCHITECTS/ ENGINEERS DETAIL.
- FRONT BOUNDARY TO FOOTPATH/ PLAY AREA: CONCRETE PLINTH, 150MM HIGH. GALVANISED STEEL BALUSTRADE/ RAILING TO ARCHITECTS DETAIL 600MM HIGH. INCLUDE FOR A GATE AT EACH INDIVIDUAL ENTRANCE.
- LINEN STORES: INCLUDE FOR A COMMUNAL BIN STORE, WITH RAISED SEAM ROOF ON METAL FRAME AND SELECTED CLADDING ENCLOSURE. REFER TO ARCHITECTS DETAIL.
- DOOR/ PATIO CANOPIES: SELECTED FIRE GLASS OR PRESSED METAL CLADDING ON VAPOUR BARRIER ON PLYWOOD FRAME ON SECONDARY STEEL FRAME WITH 75/100 X 50MM STUDWORK. REFER TO THE ENGINEERS DETAIL. INCLUDE FOR A LEAD FLASHING AND STEPPED DPC TRAY TO BRICK WALL OVERHEAD.
PROVIDE FOR A SMOOTH PLASTER PANEL BETWEEN GROUND FLOOR APARTMENT ENTRANCE DOOR AND GLAZED SCREEN WITH A SELECTED PRE-COLOUR AS SET OUT ON THE DRAWINGS.
- INCLUDE FOR A SELECTED, COLOURED, FIBREGLASS PARAPET CAPPING TO THE PARTY WALL BETWEEN INDIVIDUAL FIRST FLOOR BALCONIES. FIBRE GLASS ON VAPOUR BARRIER ON SELECTED PLYWOOD CAVITY CLOSER. RETURN PARAPET WALLS TO RECEIVE A SMOOTH PLASTER FINISH. INCLUDE FOR A DPC TRAY TO FINISH ABOVE THE PARAPET CAPPING WHERE THE JUNCTION WITH THE TWO STOREY WALL OCCURS.

| Revision | Description | Date |
|----------|-------------|------|
| | | |

Status: **PART 8 PLANNING DRAWINGS**

Client: PROPOSED HOUSING AT NASH'S BOREEN
 Address: NASH'S BOREEN, UPPER FAIRHILL, CORK
 Date: 17.06.22 Scale: AS SHOWN
 Drawn By: PC Checked By: MC Approved By: PH



Drawing Number: **20-15-P-203**
 021 4430110 • info@horgan-carroll.ie • www.horgan-carroll.ie
 3 Water's Edge, Riverside way, Midleton, Co. Cork, T22 A253

Drawing Title: **BLOCK D - TYPE A, C, E & F**