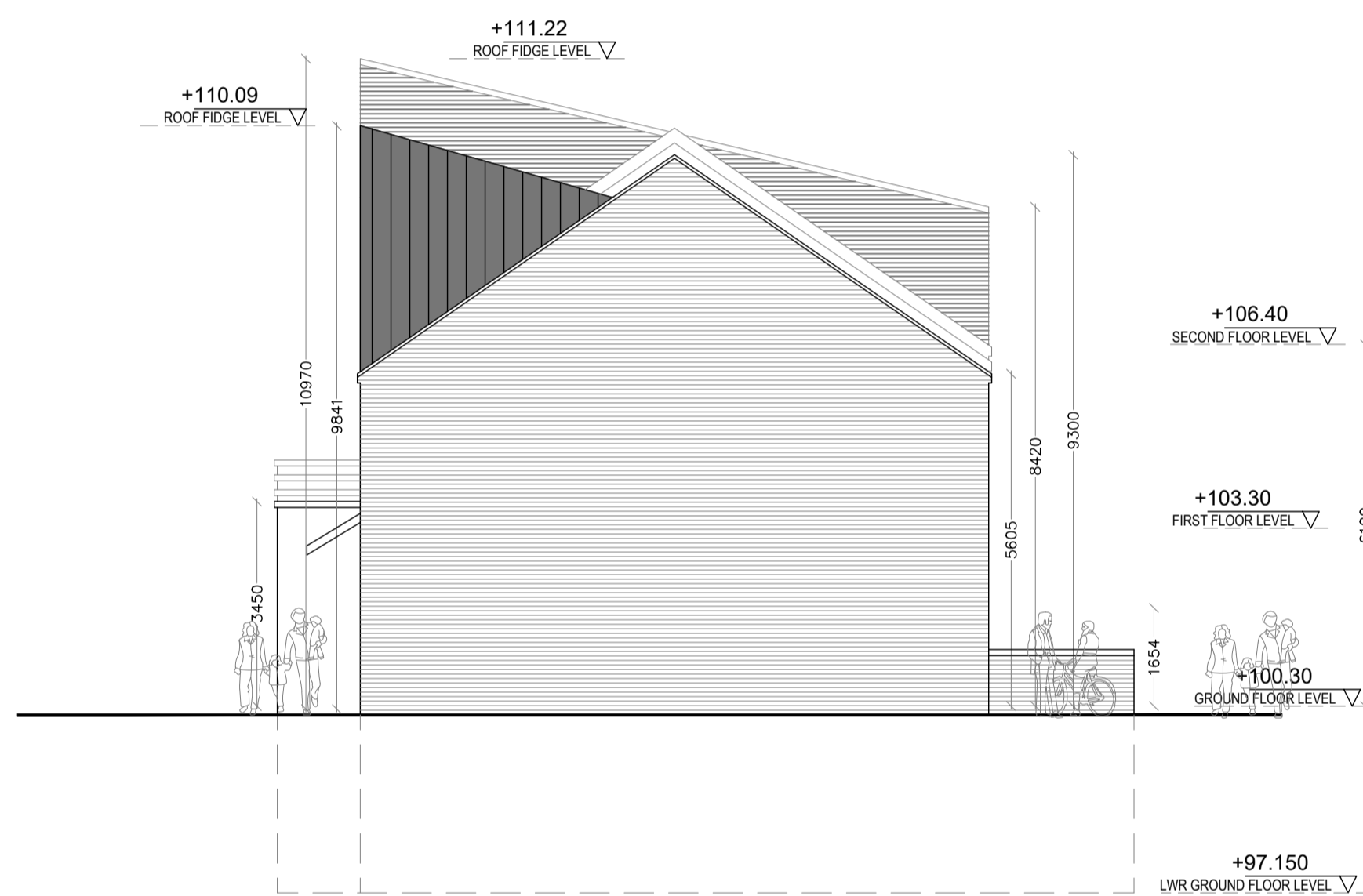
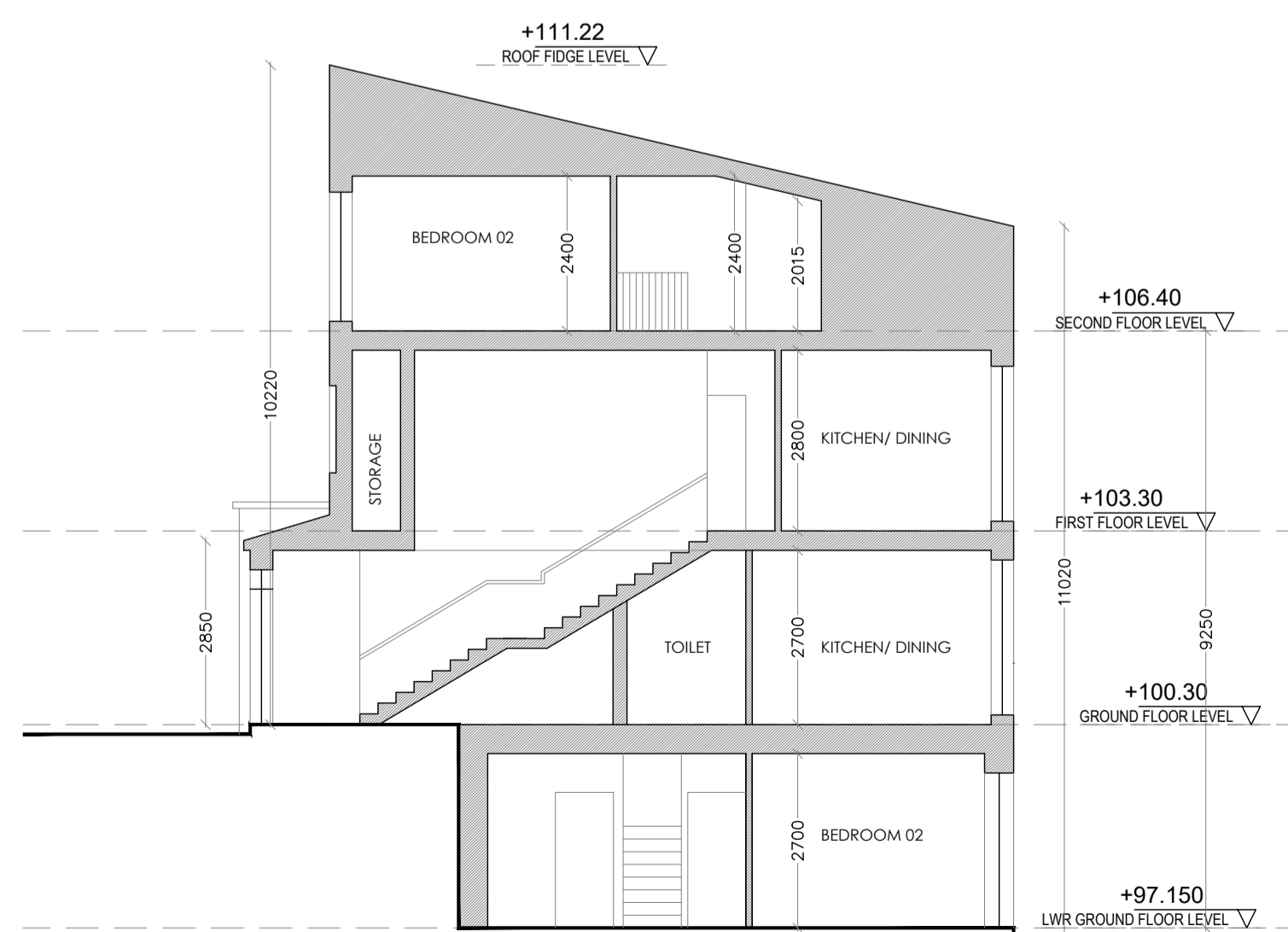




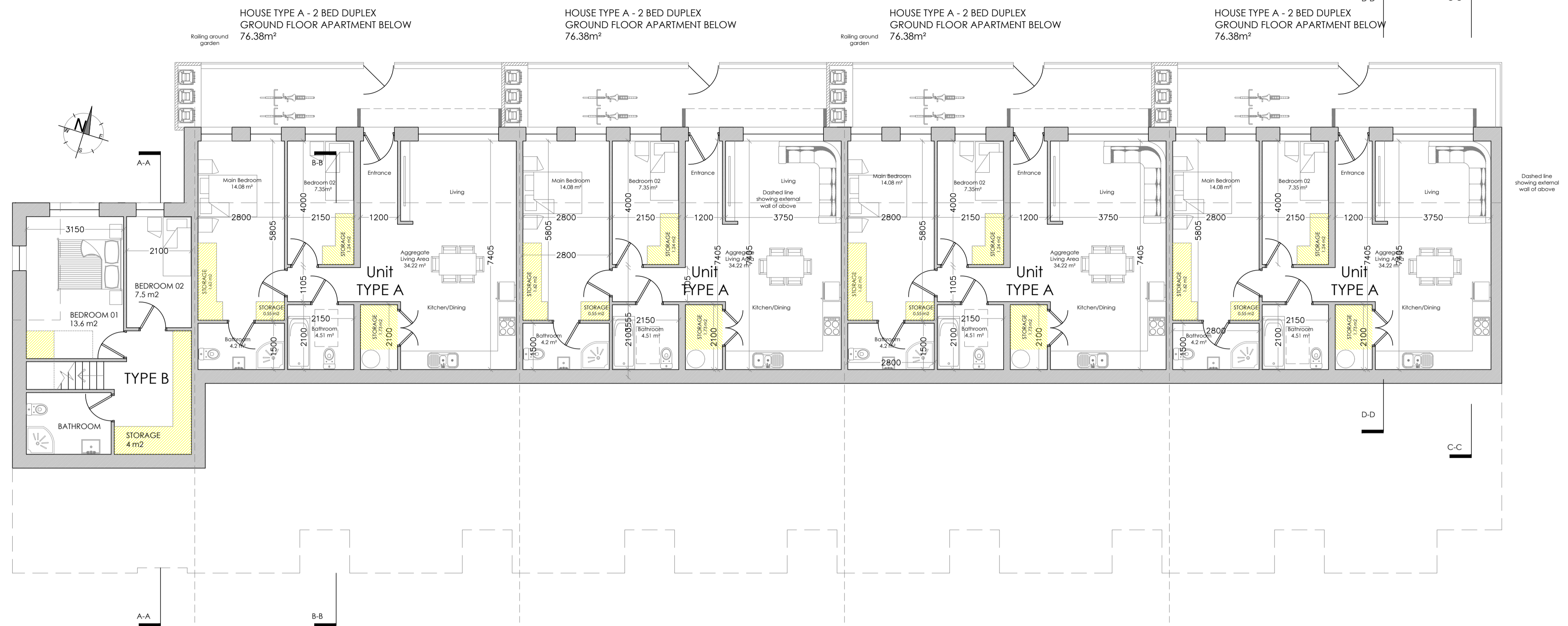
Proposed West Elevation - Block E
SCALE 1:100 @ A1



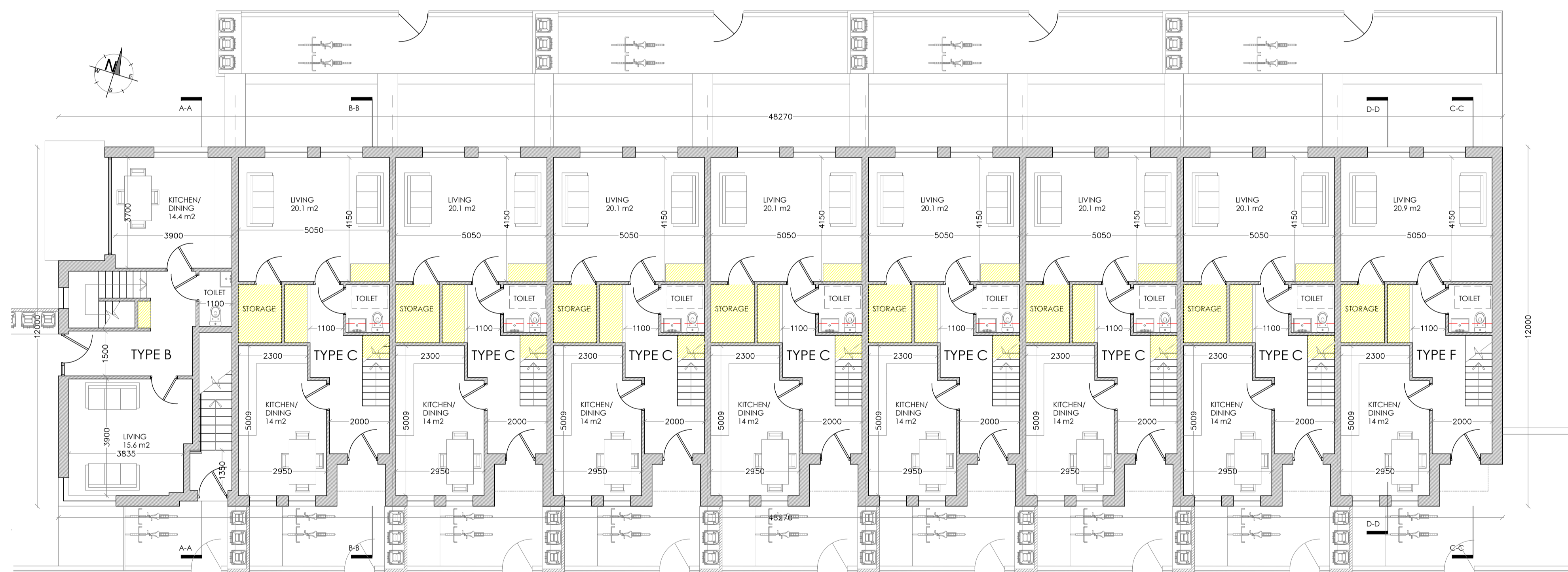
Proposed East Elevation - Block E
SCALE 1:100 @ A1



Proposed Section A-A - Block E
SCALE 1:100 @ A1



Proposed Lower Ground Floor Plan - Block E
SCALE 1:100 @ A1



Proposed Ground Floor Plan - Block E
SCALE 1:100 @ A1

DUPLEX UNITS - FRONT / SOUTHERN ELEVATION:

- EXTERNAL BRICK:** SELECTED BUFF BRICK WHERE SHOWN IN THE ELEVATIONS.
- EXTERNAL WALL FINISH:** WET DASH, COLOURED PLASTER WITH RAISED SMOOTH PLASTER BANDING TO DOORS AND WINDOWS.
- PITCHED ROOFING:** SELECTED THRUTONE SLATE OR SIMILAR APPROVED TO PITCHED ROOF'S WHERE SHOWN.
- FASCIA & SOFFIT:** REFER TO THE ATTACHED ARCHITECTS DETAIL REPRESENTING A RAISED PLASTERED FASCIA AND BARGE BOARD. INCLUDE FOR FINING THE GREY RAINWATER GUTTER TO THE RAFTER. INCLUDE FOR OVER LEAVES VENTILATION IN ACCORDANCE WITH THE ATTACHED DETAIL. INCLUDE FOR SELECTED GREY HALF ROUND AND ROUND, RAINWATER GOODS AND DOWNPIPES.
- ROOF BARGE:** INCLUDE FOR A SELECTED TEGRAL OR SIMILAR APPROVED EDGE OF SLATE TRIM IN ACCORDANCE WITH THE ARCHITECTS DETAIL. INCLUDE FOR 400MM OF ROYF ISO TIC INSULATION BETWEEN AND ACROSS CEILING RAFTERS. REFER TO THE ARCHITECTS DETAILS.
- WINDOWS & DOORS:** INCLUDE FOR SELECTED COLOUR (REFER TO THE DESIGN STATEMENT) WINDOWS AND DOORS. WINDOWS TO BE DOUBLE AND TRIPLE GLAZED, ENERGY ASSESSMENT/ UNIT DEPENDENT. WINDOWS FRAMES TO INCLUDE FOR NATURAL VENTILATION OUTPUTS IN A COLOUR TO MATCH THE WINDOW FRAME.
- INCLUDE FOR GALVANISED STEEL LOUVERED COVERS ON A SMOOTH PLASTER BACKGROUND TO ALL MECHANICAL VENTILATION OPENINGS.**
- RAISED SEAM CLADDING TO DROMER:** PROVIDE FOR RAISED SEAM METAL CLADDING TO THE WALLS OF GABLE END WINDOWS AS SHOWN ON THE ELEVATIONS.
- RAISED SEAM ROOF:** INCLUDE FOR SELECTED RAISED SEAM CLADDING TO THE ROOF AND RETURN WALLS OF THE MONO PITCH ROOF OVER TOWNHOUSES 1 & 2. RAISED SEAM TO BE CONSTRUCTED ON VAPOUR BARRIER, ON PLYWOOD ON TREATED DEAL BATTEN ON BREATHABLE FELT ON PLYWOOD ON TIMBER RAFTER/ STUD. SPACE TO REAR OF EXTERNAL PLYWOOD TO BE VENTILATED.

10. FLAT BAY ROOF: INCLUDE FOR SELECTED ALUMINUM OR SIMILAR APPROVED SINGLE PLY MEMBRANE TO THE FLAT ROOF OVER THE GROUND FLOOR BAY, STREETSIDE. INCLUDE FOR EXTENDING THE MEMBRANE UP THE INSIDE OF THE PARAPET AND ACROSS THE TOP OF THE CAVITY PRIOR TO FIXING OF THE PARAPET CAPPING.

- INCLUDE FOR THE ROOFING MEMBRANE ON VAPOUR BARRIER ON PLYWOOD ON 180MM OF SELECTED INSULATION ON 275MM ON PLYWOOD, ON FIRING PRICE, ON 175 X 50 RAFTER. INCLUDE FOR AN AIRTIGHTNESS MEMBRANE TO THE UNDERSIDE OF THE RAFTER AND FOR FIXING A 12.5MM PLASTER SLAB.**
- 11. FRONT BOUNDARY TO FOOTPATH/ ROAD:** CONCRETE FINISH, 150MM HIGH. GALVANISED STEEL BALUSTRADE/ RAILING TO ARCHITECTS DETAIL. 600MM HIGH. INCLUDE FOR A GATE AT EACH INDIVIDUAL ENTRANCE.
- 12. BIN STORES:** INCLUDE FOR FORMING BIN STORES AS PER THE ARCHITECTS DETAIL WITH BRICK SURROUND, CAST IN SITU CONCRETE ROOF AND SELECTED TIMBER/ RECYCLED PLASTIC (WOOD EFFECT) DOORS.
- 13. PROVIDE FOR A SMOOTH PLASTER WITH A SELECTED PRE-COLOUR TO THE AREAS SHOWN ON THE CORNER TURNING BUILDINGS AS SET OUT ON THE DRAWINGS.**
- 14. DOOR CANOPIES:** BASED SEAM TO BE CONSTRUCTED ON VAPOUR BARRIER, ON PLYWOOD ON TREATED DEAL BATTEN ON BREATHABLE FELT ON PLYWOOD ON EXPOSED AND TREATED TIMBER FRAME (REFER TO THE ARCHITECTS DETAIL) INCLUDE FOR A LEAD FLASHING AND STEPPED DPC TRAY ON BOTH PLANNING WALLS. INCLUDE FOR PROVIDING A SELECTED PAINTED FINISH TO THE EXPOSED CANOPY FRAME.

DUPLEX UNITS - REAR / NORTHERN ELEVATION:

- EXTERNAL BRICK:** SELECTED BUFF BRICK WHERE SHOWN IN THE ELEVATIONS.
- EXTERNAL WALL FINISH:** WET DASH, COLOURED PLASTER WITH RAISED SMOOTH PLASTER BANDING TO DOORS AND WINDOWS AS SHOWN.
- PITCHED ROOFING:** SELECTED THRUTONE SLATE OR SIMILAR APPROVED TO PITCHED ROOF'S WHERE SHOWN.
- FASCIA & SOFFIT:** REFER TO THE ATTACHED ARCHITECTS DETAIL REPRESENTING A RAISED PLASTERED FASCIA AND BARGE BOARD. INCLUDE FOR FINING THE GREY RAINWATER GUTTER TO THE RAFTER. INCLUDE FOR OVER LEAVES VENTILATION IN ACCORDANCE WITH THE ATTACHED DETAIL. INCLUDE FOR SELECTED GREY HALF ROUND AND ROUND, RAINWATER GOODS AND DOWNPIPES.
- ROOF BARGE:** INCLUDE FOR A SELECTED TEGRAL OR SIMILAR APPROVED EDGE OF SLATE TRIM IN ACCORDANCE WITH THE ARCHITECTS DETAIL. INCLUDE FOR 400MM OF ROYF ISO TIC INSULATION BETWEEN AND ACROSS CEILING RAFTERS. REFER TO THE ARCHITECTS DETAILS.
- WINDOWS & DOORS:** INCLUDE FOR SELECTED COLOUR (REFER TO THE DESIGN STATEMENT) WINDOWS AND DOORS. WINDOWS TO BE DOUBLE AND TRIPLE GLAZED, ENERGY ASSESSMENT/ UNIT DEPENDENT. WINDOWS FRAMES TO INCLUDE FOR NATURAL VENTILATION OUTPUTS IN A COLOUR TO MATCH THE WINDOW FRAME.
- INCLUDE FOR GALVANISED STEEL LOUVERED COVERS ON A SMOOTH PLASTER BACKGROUND TO ALL MECHANICAL VENTILATION OPENINGS.**
- RAISED SEAM ROOF:** INCLUDE FOR SELECTED RAISED SEAM CLADDING TO THE ROOF AND RETURN WALLS OF THE MONO PITCH ROOF OVER TOWNHOUSES 1 & 2. RAISED SEAM TO BE CONSTRUCTED ON VAPOUR BARRIER, ON PLYWOOD ON TREATED DEAL BATTEN ON BREATHABLE FELT ON PLYWOOD ON TIMBER RAFTER/ STUD. SPACE TO REAR OF EXTERNAL PLYWOOD TO BE VENTILATED.

9. BALCONY / FLAT ROOF: INCLUDE FOR SELECTED PAVING ON SPACER BASES ON ALUMINUM OR SIMILAR APPROVED SINGLE PLY MEMBRANE TO THE FLAT ROOF OVER THE GROUND FLOOR POP-OUT. INCLUDE FOR EXTENDING THE MEMBRANE UP THE INSIDE OF THE SIDE PARAPET WALLS BY 200MM. INCLUDE FOR A TANKING MEMBRANE TRAY ACROSS THE CAVITY PARAPET WALL AND FLASHING SAME OVER THE ROOFING MEMBRANE UPSTAIRS. INCLUDE FOR DRESSING THE ROOFING MEMBRANE ACROSS THE EXTERNAL WALL FOR FITTING AND LEAVES GUTTER AND OR WEATHERING IN ACCORDANCE WITH THE ARCHITECTS DETAIL.

- INCLUDE FOR THE ROOFING MEMBRANE ON VAPOUR BARRIER ON PLYWOOD ON 180MM OF SELECTED INSULATION ON SLOPED TO FALLS AWAY FROM THE TWO STOREY BUILDING) ON 200MM PRE-CAST CONCRETE STAB TO THE ENGINEERS DETAIL & SPECIFICATION. INCLUDE FOR AN ARTIGHTNESS MEMBRANE TO THE UNDERSIDE OF THE SLAB AND FOR FIXING A 12.5MM PLASTER SLAB ON TIMBER BATTEN TO THE UNDERSIDE.**
- PROVIDE FOR GALVANISED STEEL BALUSTRADE/ RAILING TO ARCHITECTS DETAIL. 1500MM HIGH EXTENDING FROM PARTY WALL TO PARTY WALL. INCLUDE FOR FACE FINISH TO THE EXTERNAL BRICKWORK AS PER THE ARCHITECTS/ ENGINEERS DETAIL.**
- 10. FRONT BOUNDARY TO FOOTPATH/ PLAY AREA:** CONCRETE FINISH, 150MM HIGH. GALVANISED STEEL BALUSTRADE/ RAILING TO ARCHITECTS DETAIL. 600MM HIGH. INCLUDE FOR A GATE AT EACH INDIVIDUAL ENTRANCE.
- 11. BIN STORES:** INCLUDE FOR A COMMUNAL BIN STORE, WITH RAISED SEAM ROOF ON METAL FRAME AND SELECTED CLADDING ENCLOSURE. REFER TO ARCHITECTS DETAIL.
- 12. DOOR/ PATIO CANOPIES:** SELECTED FIBREGLASS OR PRESSED METAL CLADDING ON VAPOUR BARRIER ON PLYWOOD FRAME ON SECONDARY STEEL FRAME WITH 75/100 X 50MM STUDWORK. (REFER TO THE ARCHITECTS DETAIL) INCLUDE FOR A LEAD FLASHING AND STEPPED DPC TRAY TO BRICK WALL OVERHEAD.
- PROVIDE FOR A SMOOTH PLASTER PANEL BETWEEN GROUND FLOOR APARTMENT ENTRANCE DOOR AND GLAZED SCREEN WITH A SELECTED PRE-COLOUR AS SET OUT ON THE DRAWINGS.**
- 13. INCLUDE FOR A SELECTED, COLOURED, FIBREGLASS PARAPET CAPPING TO THE PARTY WALL BETWEEN INDIVIDUAL FIRST FLOOR BALCONIES. FIBRE GLASS ON VAPOUR BARRIER ON SELECTED PLYWOOD CAVITY CLOSING. RETURN PARAPET WALLS TO RECEIVE A SMOOTH PLASTER FINISH. INCLUDE FOR A DPC TRAY TO FINISH ABOVE THE PARAPET CAPPING WHERE THE JUNCTION WITH THE TWO STOREY WALL OCCURS.**

Revision	Description	Date

Status: PART 8 PLANNING DRAWINGS

Project: PROPOSED HOUSING AT NASH'S BOREEN
 Client: RCH THOMAS
 Address: NASH'S BOREEN, UPPER FAIRHILL, CORK
 Date: 17.06.22
 Drawn By: PC
 Checked By: MC
 Approved By: PH

Drawing Number: **20-15-P-204**

021 4430110 • info@horgan-carroll.ie • www.horgan-carroll.ie
 3 Walter's Edge, Riverside way, Midleton, Co. Cork, T22 AD53

Block E - TYPE A, B, C, D & F