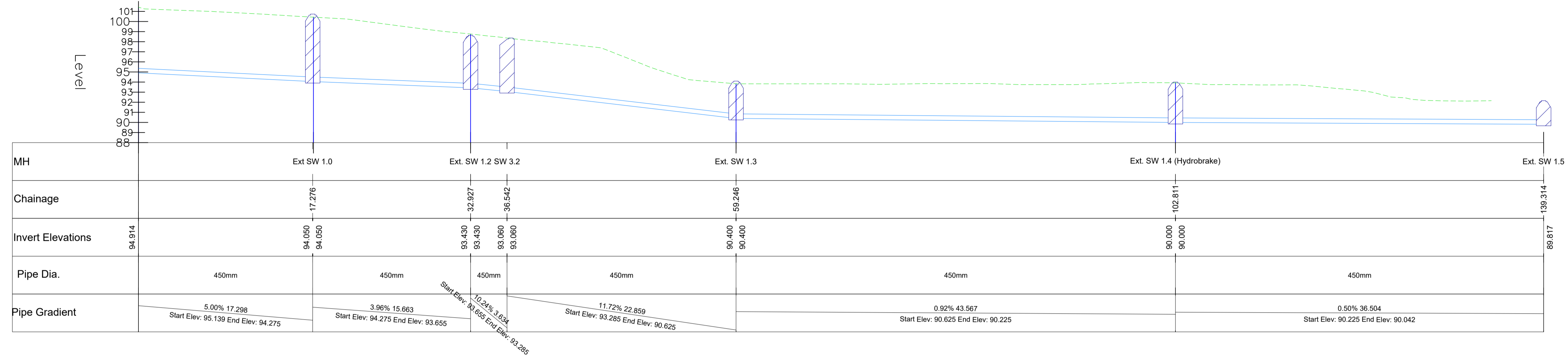


EXT STORM SEWER - LONGSECTION



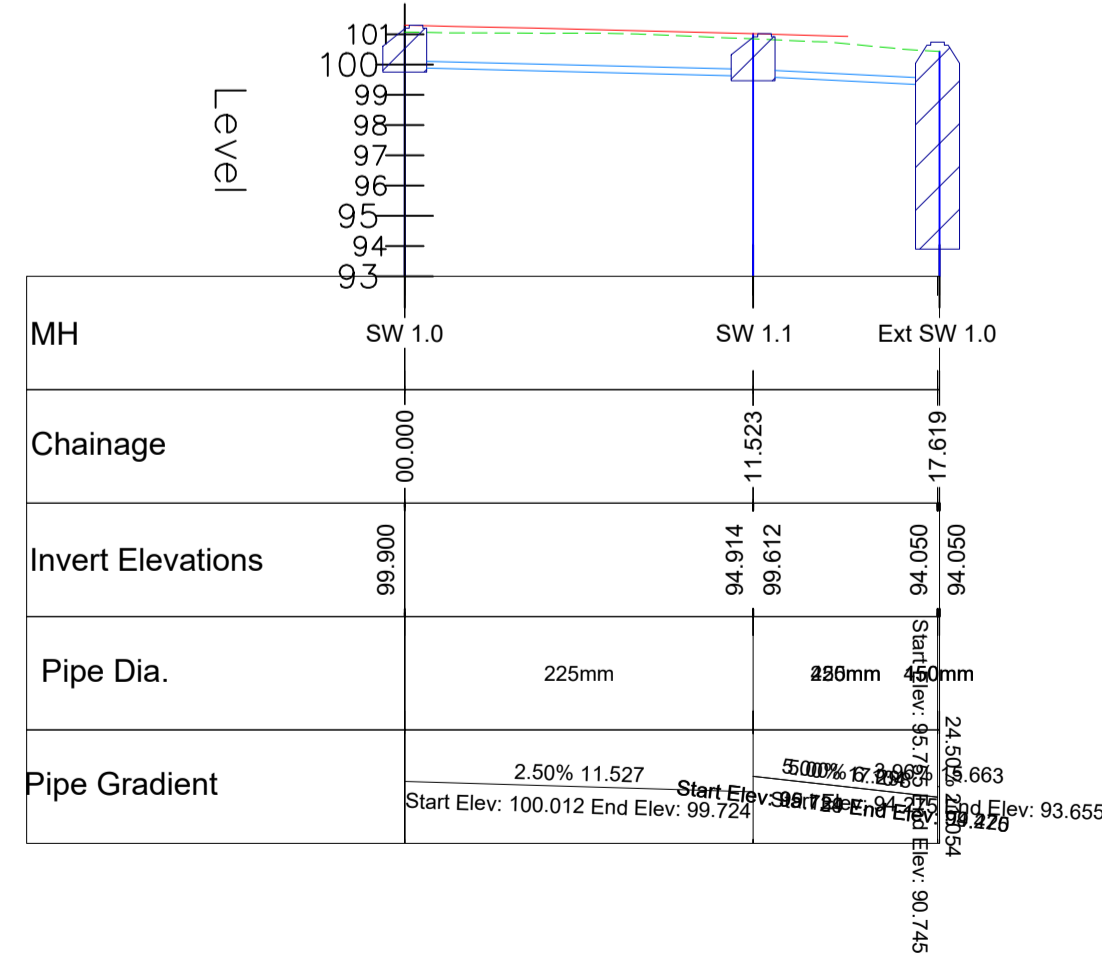
NOTES:
 All dimensions in metres.
 Do not scale from drawing.
 For any discrepancies found please consult with design office.

- Manhole covers, where located in grass areas, shall be surrounded by a concrete plinth, 200mm all round and 100mm deep formed with C20/25 concrete, 20mm aggregate size, bedded in Clause 804 material. The plinth shall incorporate mild steel reinforcement links and shall have a bull-nose finish around its external perimeter. See Section 3.13 of Wastewater Code of Practice for further details.
- Pipe material to be uPVC

Legend
 --- Existing Ground
 --- Proposed Ground

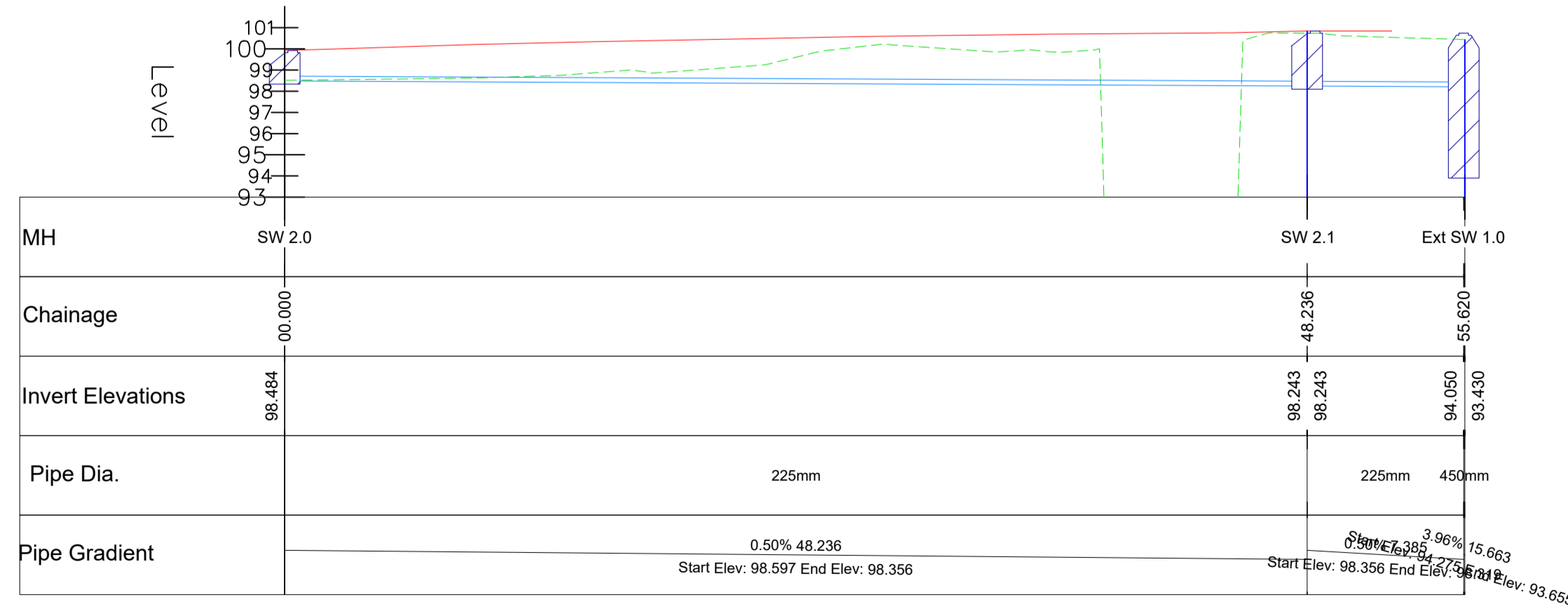
Scale: H: 1:500, V: 1:200 @ A3

STORM SEWER NO.1 - LONGSECTION



Scale: H: 1:500, 1:200 @ A3

STORM SEWER NO.2 - LONGSECTION



Scale: H: 1:500, 1:200 @ A3

| Rev | By | Date | Description |
|-----|----|------|-------------|
| | | | |

Drawing Status:
 PLANNING

Project Title:
 Housing Development, Nash's Boreen, Fair Hill, Cork City

Drawing Title:
 Storm Sewer Long Sections (Sheet 1 of 2)

Client:
 Cork City Council

M.H.L. & Associates Ltd. Consulting Engineers
 Carriga Mór House, 10 High Street, Douglas Road, Cork
 Tel: 021-4840214 Fax: 021-4840215 E-Mail: info@mhl.ie

Designed: GW **Drawn:** GW **Checked:** KM

Scale: H: 1:500, 1:200 @ A3 **Date:** Feb 2022

Job No: 21029HD **Drawing No:** NBHD_SLS_P01 **Revision:**