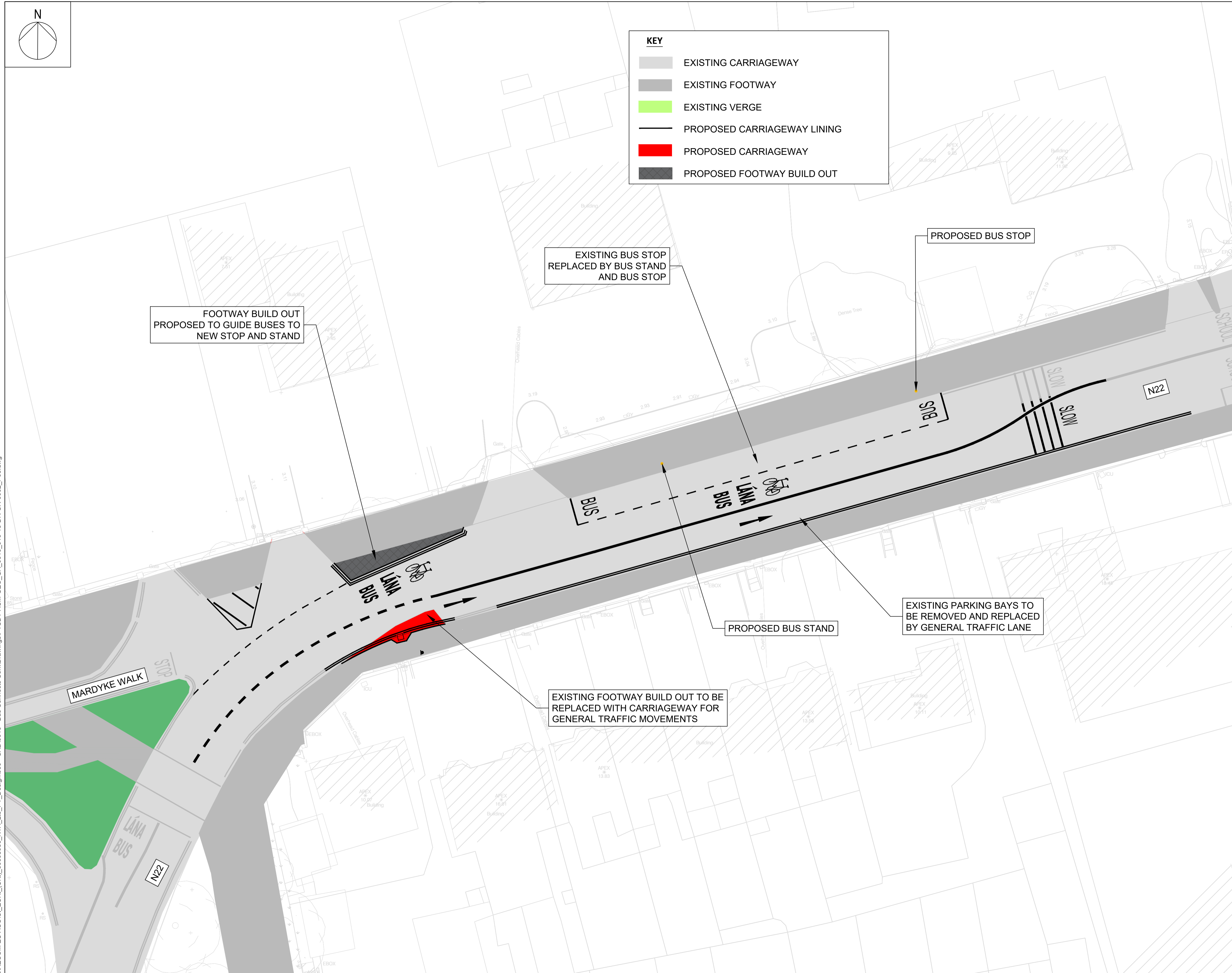


KEY	
	EXISTING CARRIAGEWAY
	EXISTING FOOTWAY
	EXISTING VERGE
	PROPOSED CARRIAGEWAY LINING
	PROPOSED CARRIAGEWAY
	PROPOSED FOOTWAY BUILD OUT



Proposal Summary
 The bus network in Cork has been comprehensively redesigned as part of the BusConnects Cork programme. The redesign work was carried out in partnership with the City and the County Councils to ensure full integration with local, regional and national policy. There was extensive engagement with the public and with stakeholders.

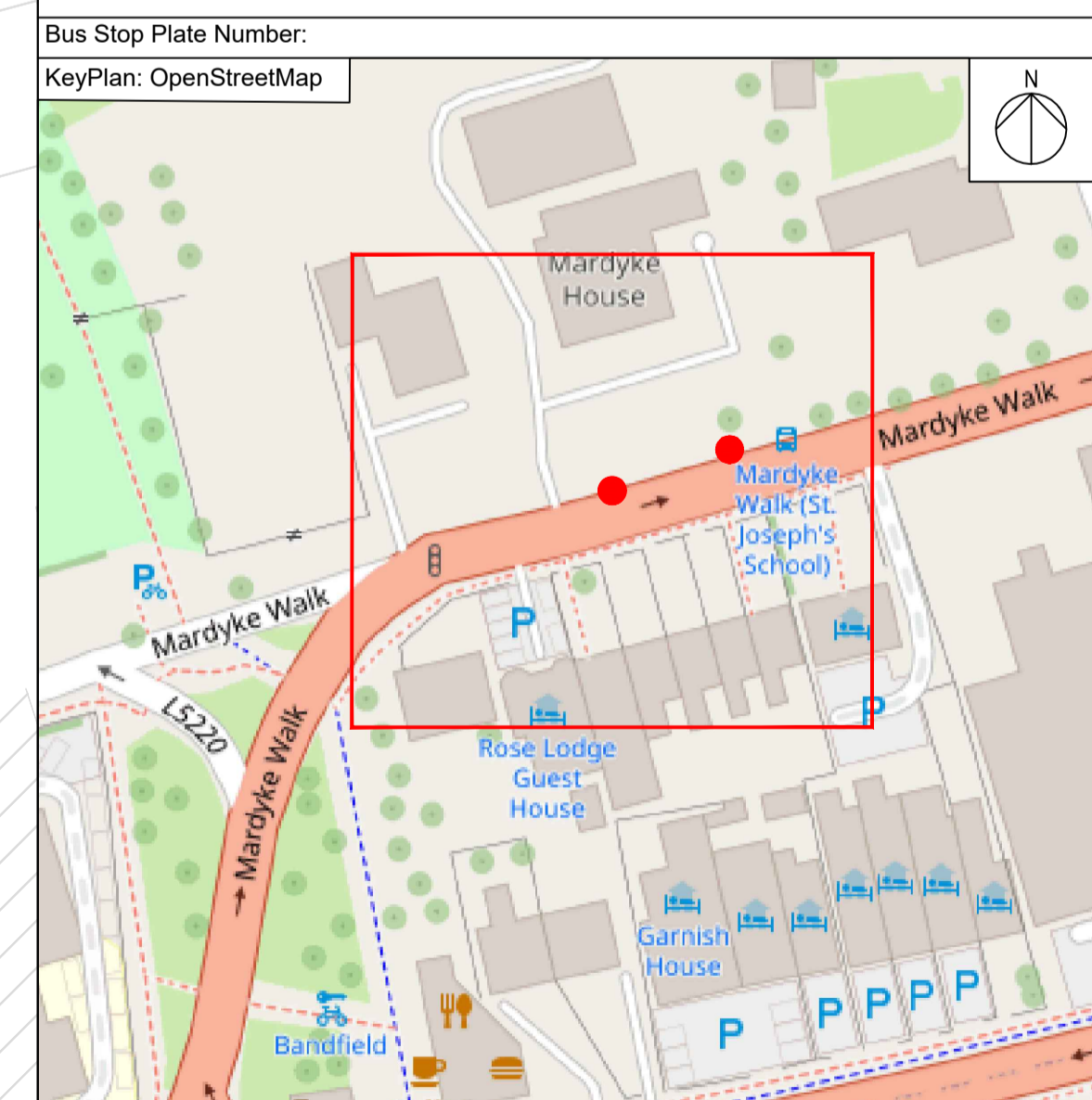
The new bus network will provide over 50% more service than existing, an unprecedented investment in Cork's public transport. More areas are being served; more people are within walking distance of a high frequency and there will be more 24-hour operation.

It is planned to deliver these benefits during 2024 and 2025. Certain infrastructure is required to allow the new network to be operated. Some bus stops in the city centre will change. Buses need a means of turning around at the new endpoints of the new/extended routes. Excellent reliability depends on layover space at the terminal to allow time in schedules for any late-running bus to return on time on its next trip.

A detailed operational review of the new bus network has now identified the shorter-term stop and terminus alterations needed to support the introduction of the new bus system.

Proposal
 With the new services 6 and 21 commencing on this site, new terminal capacity including lay-over space is needed at Mardyke to support this.

- The proposed works are summarised as follows:
- 1) Extending the existing bus cage to incorporate provision of a bus stand and bus stop location, widening of the existing bus lane to allow buses to pass the stop/stand when occupied by a bus.
 - 2) Removal of existing parking bays on southern side of the road to accommodate general traffic lane.
 - 3) Removal of kerb build-out on southern side of road and introduction of kerb build-out on northern side of road to suit lane alignments
 - 4) Renewal/replacement of other road drainage, road signage and road markings as might be necessary.
 - 5) All other associated ancillary site works.



Disclaimer
 a. © National Transport Authority (NTA) 2022. This drawing is confidential and the copyright in it is owned by NTA. This drawing must not be either loaned, copied or otherwise reproduced in whole or in part or used for any purpose without the prior permission of NTA.
 b. This drawing is to be used for the design element identified in the titlebox. Other information shown is to be considered indicative only. The drawing is to be read in conjunction with all other relevant design drawings.
 c. O.S. data used for plans are printed under © Ordnance Survey Ireland/Government of Ireland. All rights reserved. Licence Number CYAL50310228 © Ordnance Survey Ireland/Government of Ireland. All elevations are in metres and relate to OSI Geoid Model (OSGM15) Mean Head. All Co-ordinates are in Irish Transverse Mercator Grid (ITM) as defined by OSI active local GPS station.
 d. Information concerning the position of apparatus shown on this drawing is based on drawings supplied by the utility owners and/or the utility works contractor, whilst every care has been taken in the preparation of this drawing, positions should be taken as approximate and are intended for general guidance only and no representation is made by the NTA as to the accuracy, completeness, sufficiency or otherwise of this drawing and the position of the apparatus. The information contained herein does not purport to be comprehensive or final as the apparatus is subject to being altered and/or superseded. Recipients should not rely on this information. Any liabilities are hereby expressly disclaimed.
 e. The information contained herein has been provided by the NTA but does not purport to be comprehensive or final. Recipients should not rely on the information. Neither the NTA nor any of its directors, officers, employees, agents, stakeholders or advisers make any representation or warranty as to, or accept any liability or responsibility in relation to, the adequacy, accuracy, reasonableness or completeness of the information provided as part of this document or any matter on which the information is based (including but not limited to loss or damage arising as a result of reliance by recipients on the information or any part of it). Any liabilities are hereby expressly disclaimed.

Rev	Date	Drn	Chk'd	App'd	Description
P01	11/09/2023	JC	LN	ADR	DESIGN FOR PUBLIC CONSULTATION
P02	05/10/2023	OD	LN	ADR	AMENDED TO RSA COMMENTS
P03	13/10/2023	OD	LN	ADR	AMENDED TO CCC COMMENTS

Client: **NTA**
 Údarás Náisiúnta Iompair
 National Transport Authority

Engineering Designer: **AECOM**

Date: 13/10/2023 | Scale: 1:200 | Drawn: @ A1 | Checked: LN | Approved: ADR | @ A3

Phase: 1 | Route: 0016 | Stop Number: 016

Programme Title			
PUBLIC TRANSPORT STOP DESIGN TEAM SERVICES			
Drawing Title			
MARDYKE MERCY HOSPITAL NEW BUS STOP & STAND CONSULTATION			
Drawing File Name		Sheet Number	Status
PTSĐT-ACM-GEO_GA_0016_016-18-DR-CR-0002		1 of 1	S0
Rev			
P03			

C:\Users\Oliver\Desktop\AECOM\EU ACC\CI_EUR1_UK1_PT_Design\900 - CAD\0016 - Bus Connects Cork\Drawings\PTSĐT-ACM-GEO_GA_0016_016-18-DR-CR-0002_P03.dwg